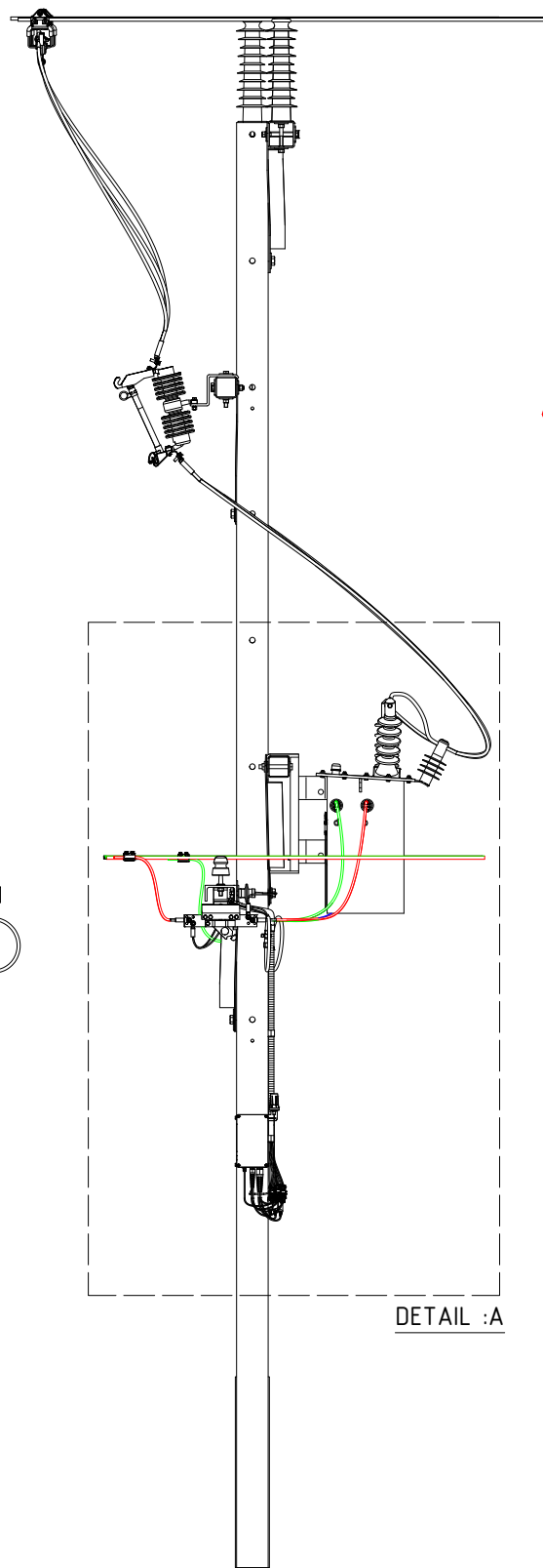


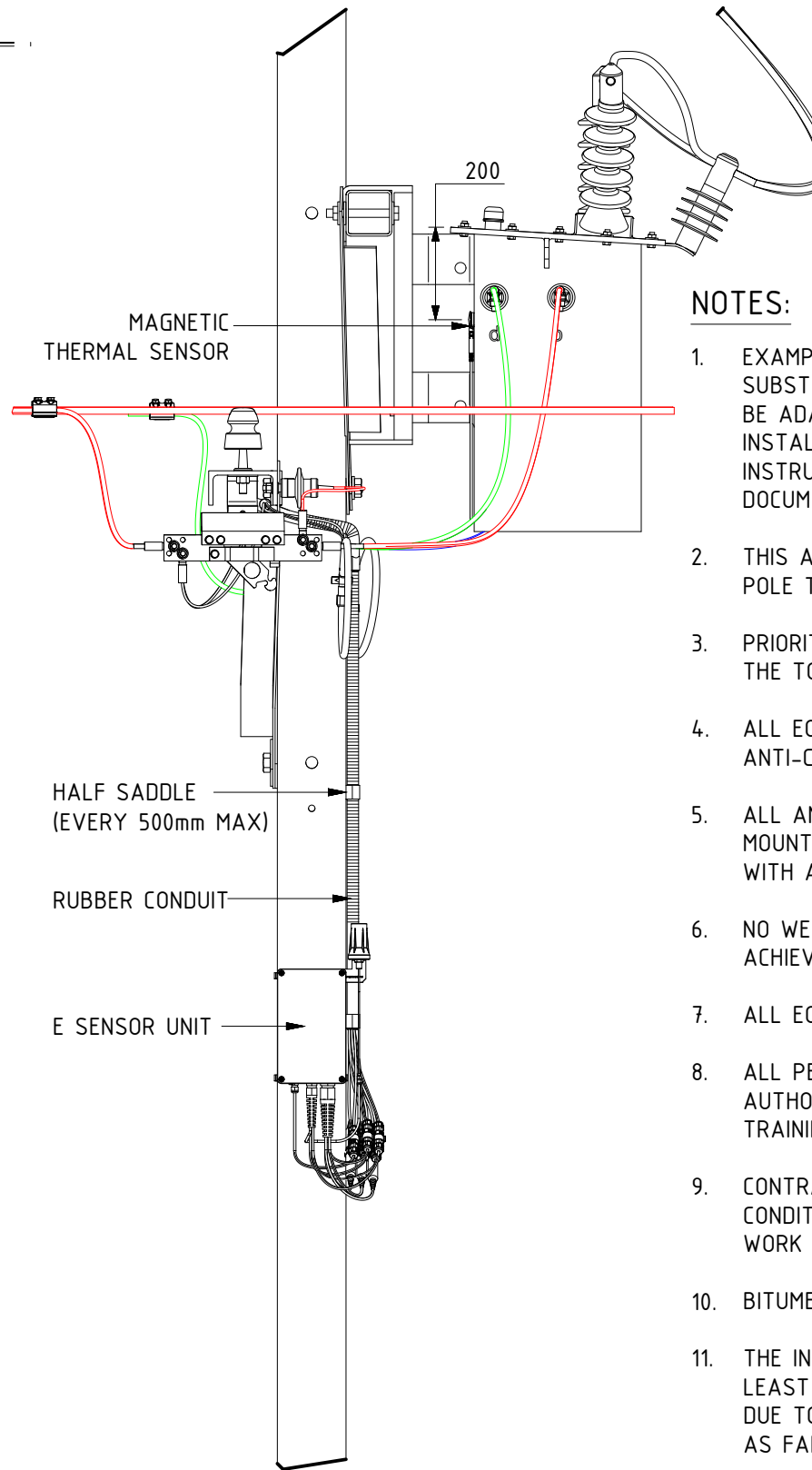
FRONT ELEVATION

SCALE- 1 : 35



SIDE ELEVATION

SCALE- 1 : 35



**DETAIL : A
(MAGNETIC THERMAL SENSOR)**

SCALE- 1:15

NOTES:

1. EXAMPLE INSTALLATION SHOWN IS FOR LATEST TRANSFORMER SUBSTATION ARRANGEMENT. THE INSTALLATION DESIGN SHALL BE ADAPTED AS REQUIRED TO SUIT LEGACY STANDARD INSTALLATION ARRANGEMENTS. REFER TO PWC WORK INSTRUCTION W1025 & MANUFACTURERS INSTALLATION DOCUMENTATION FOR DETAILS.
2. THIS ARRANGEMENT SUITS BOLTED, NON-BOLTED AND I BEAM POLE TYPES.
3. PRIORITY MUST BE GIVEN TO THE MINIMUM CLEARANCE BETWEEN THE TOP OF THE ANTENNA AND LV CROSSARM, MINIMUM 1000mm.
4. ALL EQUIPMENT TO BE INSTALLED ABOVE EXISTING ANTI-CLIMBING PLATE AS SHOWN.
5. ALL ANTENNA AND ASSOCIATED ELECTRICAL EQUIPMENT TO BE MOUNTED TO WITHSTAND CYCLONIC WIND LOADS IN ACCORDANCE WITH AUSTRALIAN STANDARDS.
6. NO WELDED FIXING PERMITTED. FIXINGS AND MOUNTING TO BE ACHIEVED BY THE DESIGN.
7. ALL EQUIPMENT SHALL BE DOUBLE INSULATED.
8. ALL PERSONNEL WORKING ON THESE STRUCTURE SHALL BE AUTHORISED AND ACCREDITED WITH ALL THE APPROPRIATE TRAINING AND PERMITS.
9. CONTRACTOR SHALL MAKE THEMSELVES AWARE OF ALL SITE CONDITIONS AND SAFETY REQUIREMENTS PRIOR TO COMMENCING WORK ON SITE.
10. BITUMEN TAPE TO BE APPLIED TO ATTACH CT'S TO CONDUCTOR.
11. THE INSTALLER IS REQUIRED TO POSITION THE EDGE DEVICE AT LEAST 600mm BELOW THE CROSS ARM. IF THIS IS NOT FEASIBLE DUE TO SITE CONSTRAINTS, THE DEVICE SHOULD BE MOUNTED AS FAR BELOW THE CROSS ARM AS PRACTICALLY POSSIBLE.
12. VOLTAGE AND CURRENT SENSING CABLES SHALL BE INSTALLED WITHIN CONDUIT UNDER THE CROSSARM AND ON THE POLE. THE CONDUIT MAY BE SPLIT TO ALLOW INSTALLATION OF CABLES AS REQUIRED.

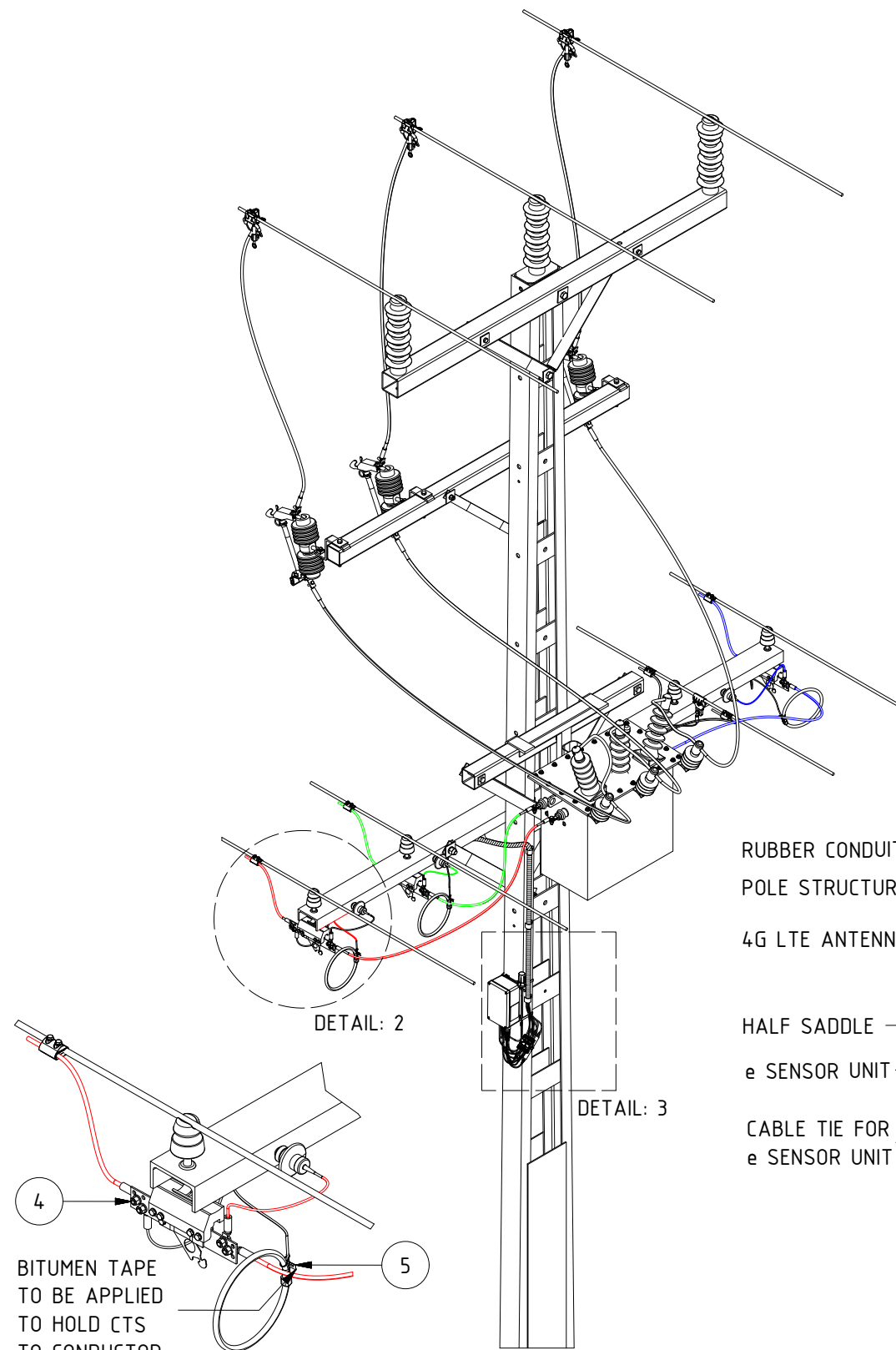
0	ISSUED FOR CONSTRUCTION	P.G.	OCT'24	B.B.	B.V.
NO	DESCRIPTION	DRN	DATE	CKD	APPD
AMENDMENTS					



NORTHERN TERRITORY

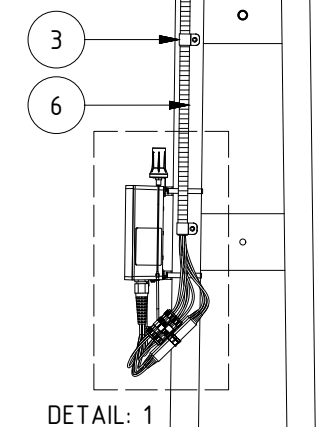
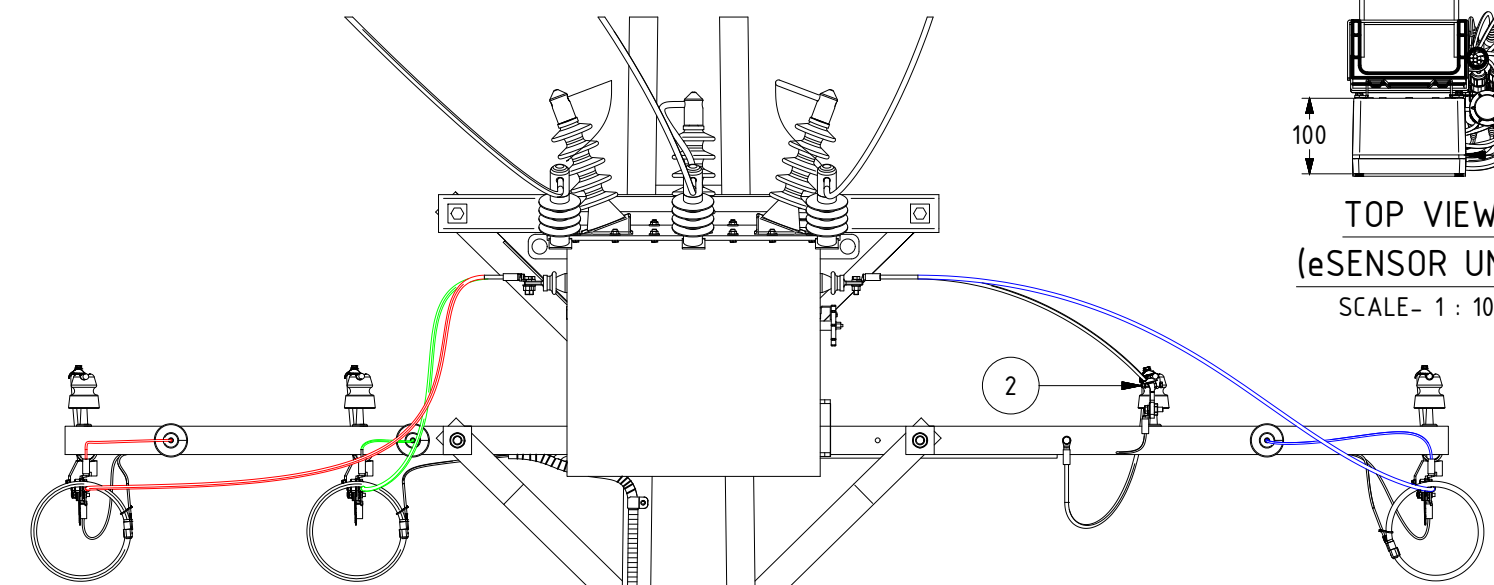
DES	R.AHMED	POWER STANDARD DRAWING		
DRN	P.GUNA	ASSEMBLIES, SUB STATION, OPEN WIRE LV MONITORING AND TELEMETRY INSTALLATION		
CKD	B.CHEUNG			
APPD	B.VANDERSTELT	SHEET 1 OF 3		
SCALE	NTS	A3	DRAWING NUMBER	S01-02-01-79_1
ISSUED	OCT'24			
ALL DIM. IN mm		DRAFTING STANDARD TO A.S.1100		CAD PRODUCT - DO NOT AMEND MANUALLY





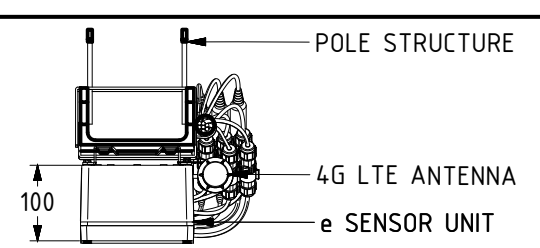
DETAIL :2
SCALE- 1:15

ISOMETRIC VIEW
SCALE- 1 : 35

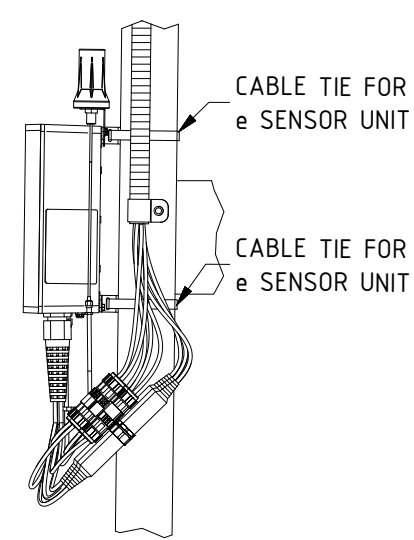


DETAIL: 1

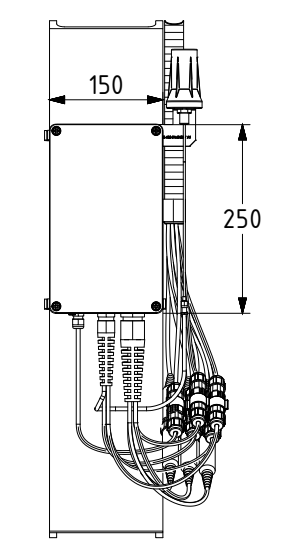
FRONT ELEVATION
SCALE- 1 : 20



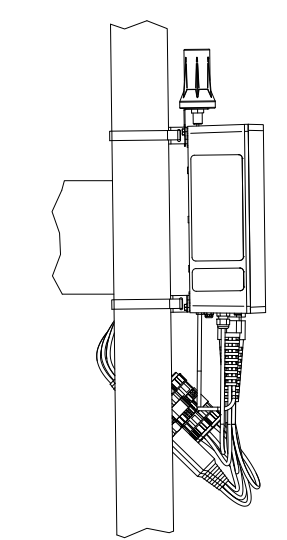
TOP VIEW
(eSENSOR UNIT)
SCALE- 1 : 10



DETAIL:1
(eSENSOR UNIT)
SCALE- 1 : 10



FRONT VIEW
(eSENSOR UNIT)
SCALE- 1 : 10



SIDE VIEW
(eSENSOR UNIT)
SCALE- 1 : 10

- RUBBER CONDUIT
- POLE STRUCTURE
- 4G LTE ANTENNA
- HALF SADDLE
- e SENSOR UNIT
- CABLE TIE FOR e SENSOR UNIT

DETAIL:3
SCALE-1:10

ITEM	QTY	DESCRIPTION	ITEM NUMBER	DRG. NUMBER
6	AR	RUBBER CONDUIT	3996	-
5	AR	BITUMEN TAPE	502356	-
4	2	M10x30 BOLT GAL. STEEL C/W NUT	504647	S01-01-04-23
3	AR	SADDLES	504212	-
2	1	DISCONNECT TEE CLAMP	2295	S01-01-04-10
1	1	LV MONITORING KIT	TBC	S01-01-08-12

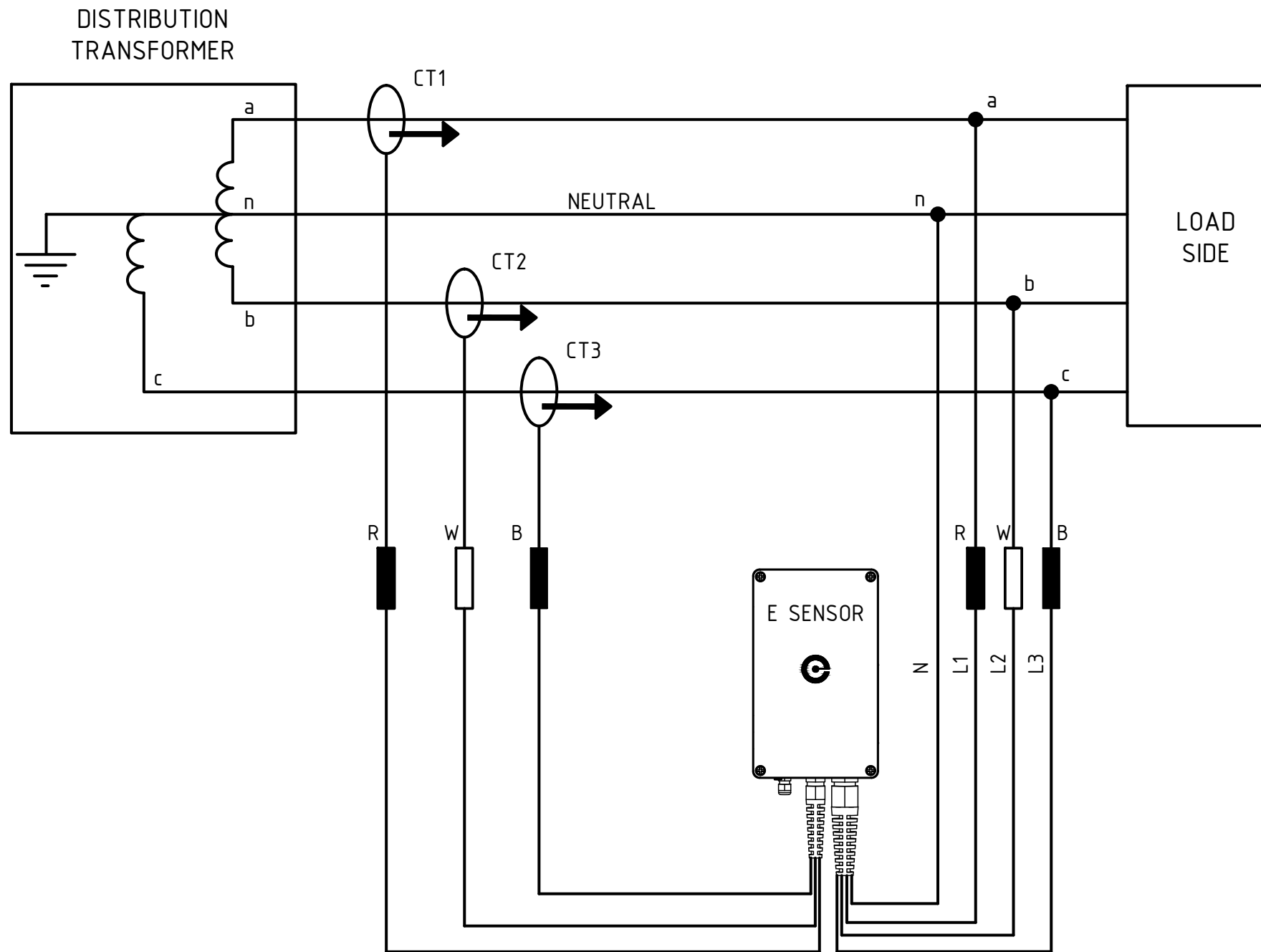
MATERIAL SCHEDULE

DES	R.AHMED	POWER STANDARD DRAWING		
DRN	P.GUNA	ASSEMBLIES, SUB STATION,		
CKD	B.CHEUNG	OPEN WIRE LV MONITORING AND		
APPD	B.VANDERSTELT	TELEMETRY INSTALLATION		
SCALE	NTS	SHEET 2 OF 3		
ISSUED	OCT'24	A3	DRAWING NUMBER	S01-02-01-79_2
ALL DIM.	IN mm			
DRAFTING STANDARD TO A.S.1100		CAD PRODUCT - DO NOT AMEND MANUALLY		0 AMDT



0	ISSUED FOR CONSTRUCTION	P.G.	OCT'24	B.B.	B.V.
NO	DESCRIPTION	DRN	DATE	CKD	APPD
AMENDMENTS					

3PH, 4 WIRE, CONFIGURATION



3 CURRENTS, Wye

THE CT SPECIAL INSTALLATION INSTRUCTIONS ARE AS FOLLOWS :

1. PRESS THE LOCKING CLIP AND PULL THE CT PLASTIC END CAP OUT OF THE SOCKET AND WRAP THE CT AROUND THE TRANSFORMER LOW VOLTAGE CONDUCTOR. (FIGURE 10)
2. WHILE PRESSING DOWN THE LOCKING CLIP, FULLY INSERT THE CT PLASTIC END CAP BACK TO THE SOCKET AND RELEASE THE LOCKING CLIP.
3. SECURE THE CT CABLE TO THE LOW VOLTAGE CONDUCTOR WITH THE SUPPLIED STAINLESS STEEL CABLE TIE.
4. ENSURE THAT BOTH THE CT LOCKING CLIPS ARE ENGAGED AROUND THE RIM OF THE CT END CAP.

							 NORTHERN TERRITORY
0	ISSUED FOR CONSTRUCTION	P.G.	OCT'24	B.B.	B.V.		
NO	DESCRIPTION	DRN	DATE	CKD	APPD		
AMENDMENTS							

DES	R.AHMED	POWER STANDARD DRAWING		
DRN	P.GUNA	ASSEMBLIES, SUB STATION, OPEN WIRE LV MONITORING AND TELEMETRY INSTALLATION		
CKD	B.CHEUNG			
APPD	B.VANDERSTELT	SHEET 3 OF 3		
SCALE	NTS	A3	DRAWING NUMBER	S01-02-01-79_3
ISSUED	OCT'24			
ALL DIM. IN mm				0
DRAFTING STANDARD TO A.S.1100			CAD PRODUCT - DO NOT AMEND MANUALLY	

