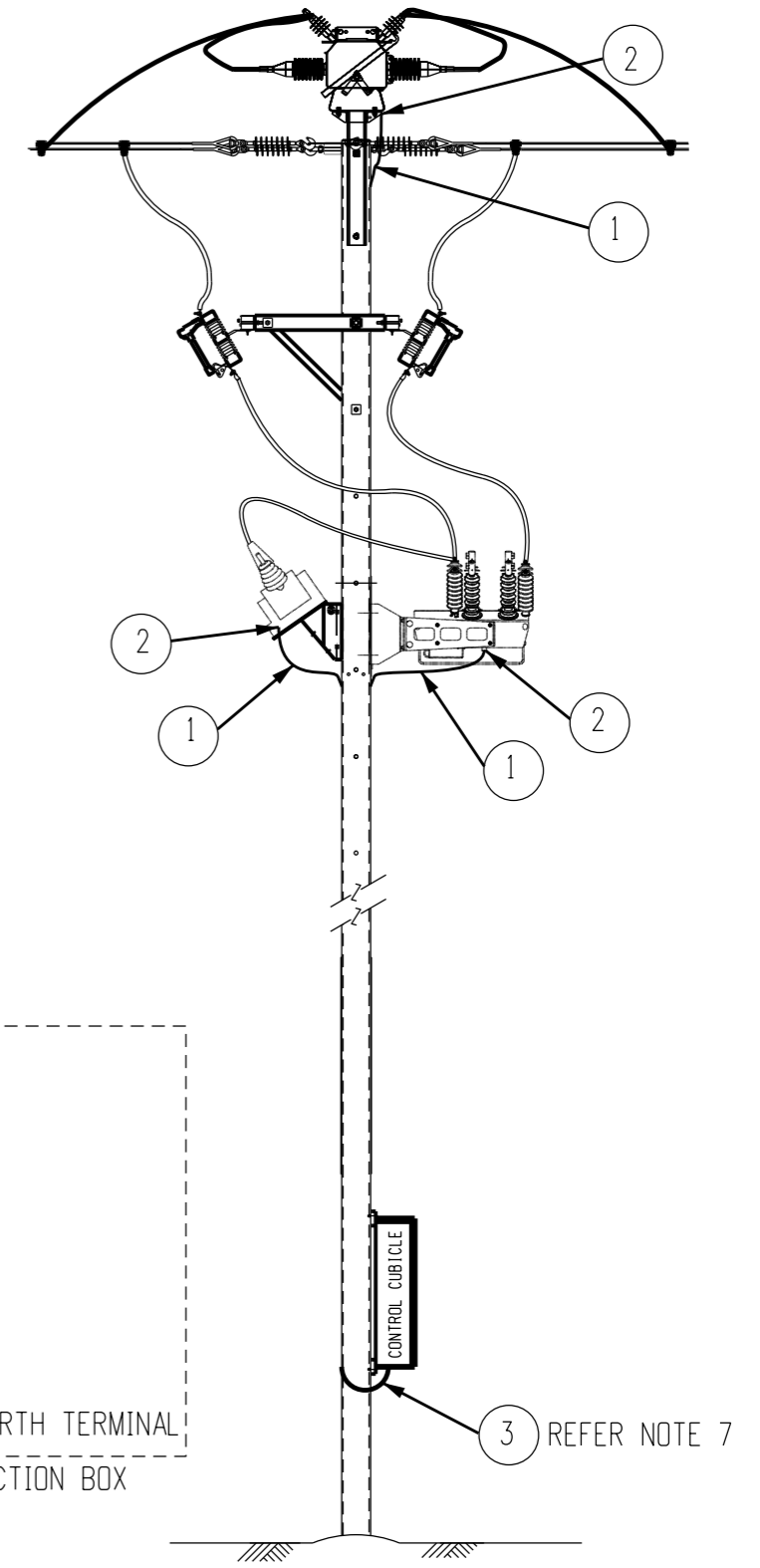
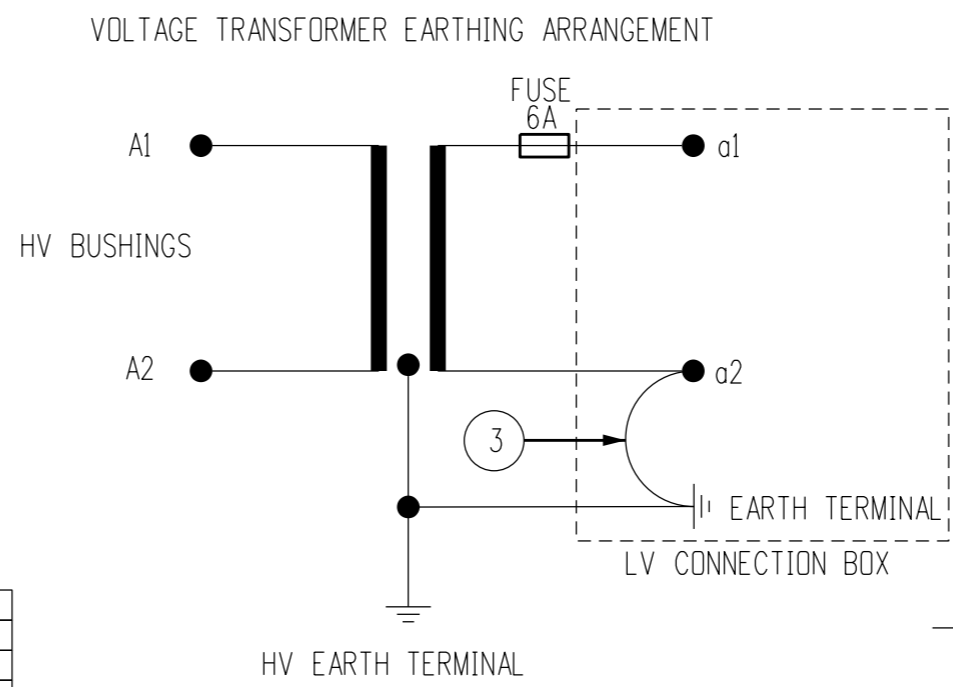
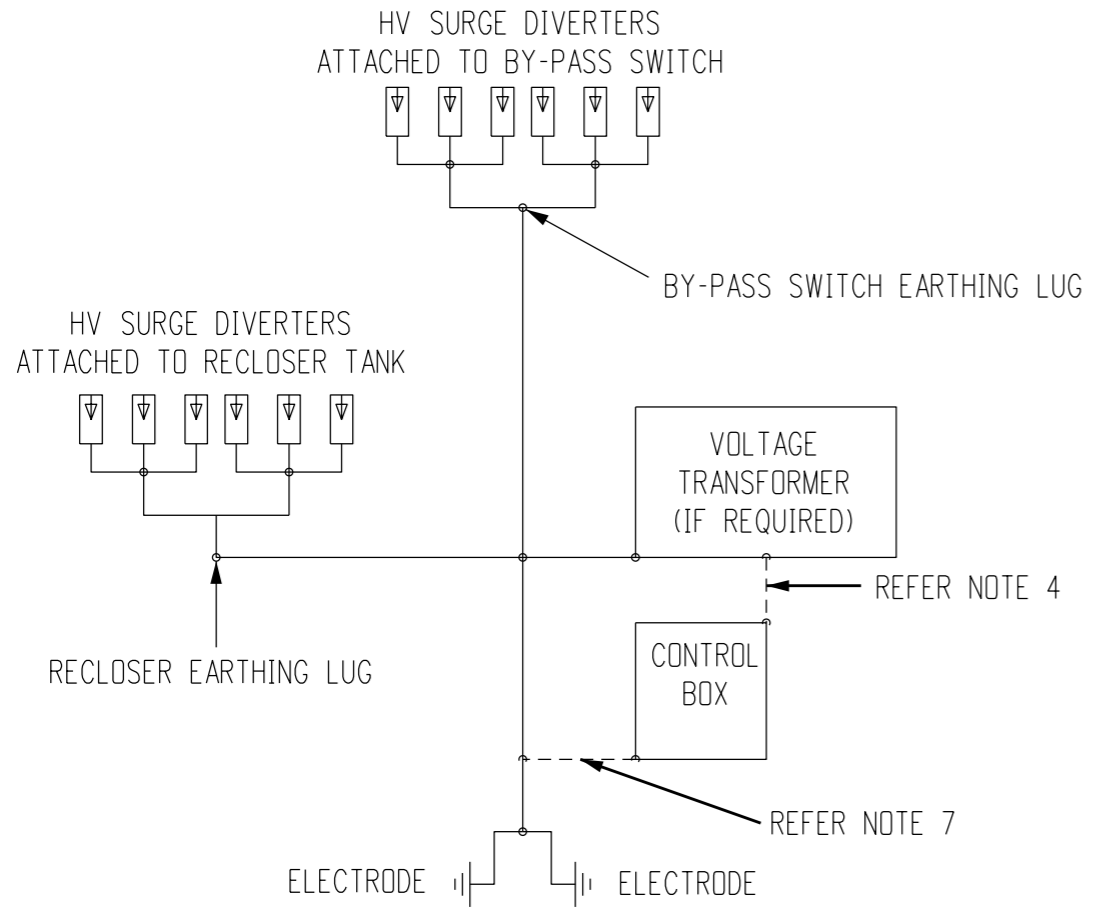


**NOTES:**

- FOR RECLOSER GENERAL ARRANGEMENT REFER TO S01-02-07-12 SHEET 2. FOR DETAILS OF THE VOLTAGE TRANSFORMER, REFER TO S01-01-09-04 & S02-01-09-05.
- FOR UNDERGROUND EARTHING ARRANGEMENT REFER TO EITHER S01-02-03-11, S01-02-03-12 OR S01-02-03-13.
- ARRANGEMENT SHOWN IS FOR A VT POWERED CONTROL BOX.
- WHERE THE CONTROL BOX POWER IS SUPPLIED BY A VT, CONTROL BOX POWER SUPPLY ACTIVE, NEUTRAL AND EARTH SHALL COME FROM THE VT.
- WHEN A VT IS USED BOND THE a2 TERMINAL TO THE EARTH TERMINAL INSIDE THE LV CONNECTION BOX
- WHERE THE CONTROL BOX POWER IS SUPPLIED BY AN EXISTING LV NETWORK, THE POWER SUPPLY ACTIVE AND NEUTRAL SHALL BE CONNECTED TO THE LV NETWORK.
- WHERE THE CONTROL BOX POWER IS SUPPLIED BY AN EXISTING LV NETWORK, BOND THE CONTROL BOX EARTH TO THE NEAREST POLE EARTHING STUD.



3	AR	CABLE, 4 SQMM COPPER, YELLOW/GREEN PVC INSULATED	1750	S02-01-01-23
2	6	LUGS FOR 70SQMM COPPER CABLE	5512	S02-01-02-11
1	AR	CABLE, 70SQMM COPPER, YELLOW/GREEN PVC INSULATED	401059	S02-01-01-23
ITEM	QTY	DESCRIPTION	ITEM NUMBER	DWG No.

**MATERIAL SCHEDULE**

NO	DESCRIPTION	DRN	DATE	CKD	APPD
4	UPDATED GBS IMAGERY. SPELLING CORRECTED.	P.BH.	AUG'22	P.BH.	B.C.
3	UPDATED NOTE 1 & VT FUSE RATING	A.N.	JUN'21	A.N.	B.C.
2	TITLEBLOCK & DRAWING NUMBERS FORMATTED	K.T.	APR'19	C.C.	C.C.
1	ADDED 2A FUSE	C.M.	NOV'13	B.C.	B.C.
0	ISSUED FOR CONSTRUCTION	A.T.	NOV'12	B.C.	B.C.



DES	A. TAYLOR	POWER STANDARD DRAWING		
DRN	A. TAYLOR	<b>EARTHING, NOJA RECLOSER AND VOLTAGE TRANSFORMER GENERAL ARRANGMENT</b>		
CKD	B. CHEUNG			
APPD	B. CHEUNG			
SCALE	N.T.S.	<b>A3</b>	<b>DRAWING NUMBER</b>	<b>S01-02-03-25</b>
ISSUED	NOV'12			
ALL DIM.	IN mm	DRAFTING STANDARD TO A.S.1100		CAD PRODUCT - DO NOT AMEND MANUALLY

