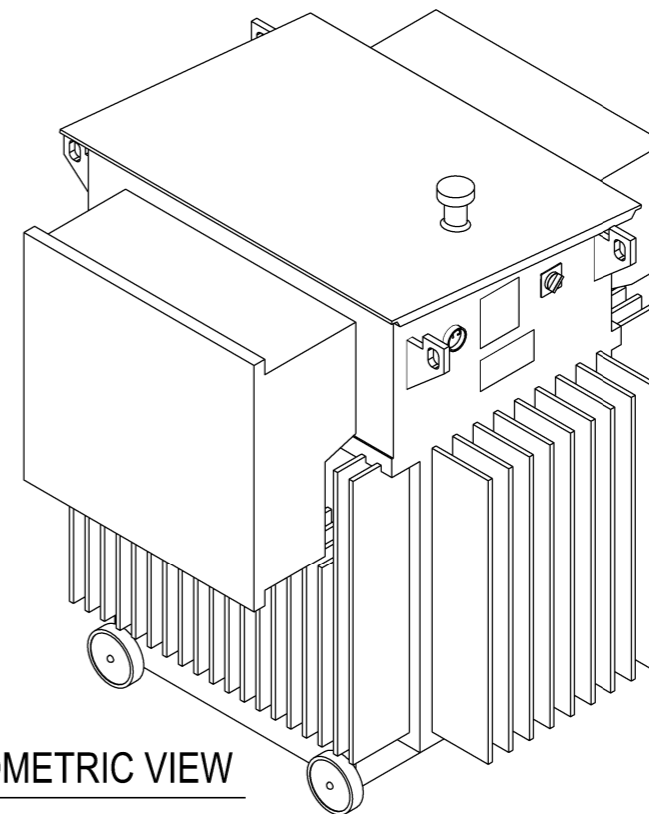


PLAN VIEW

N.T.S.

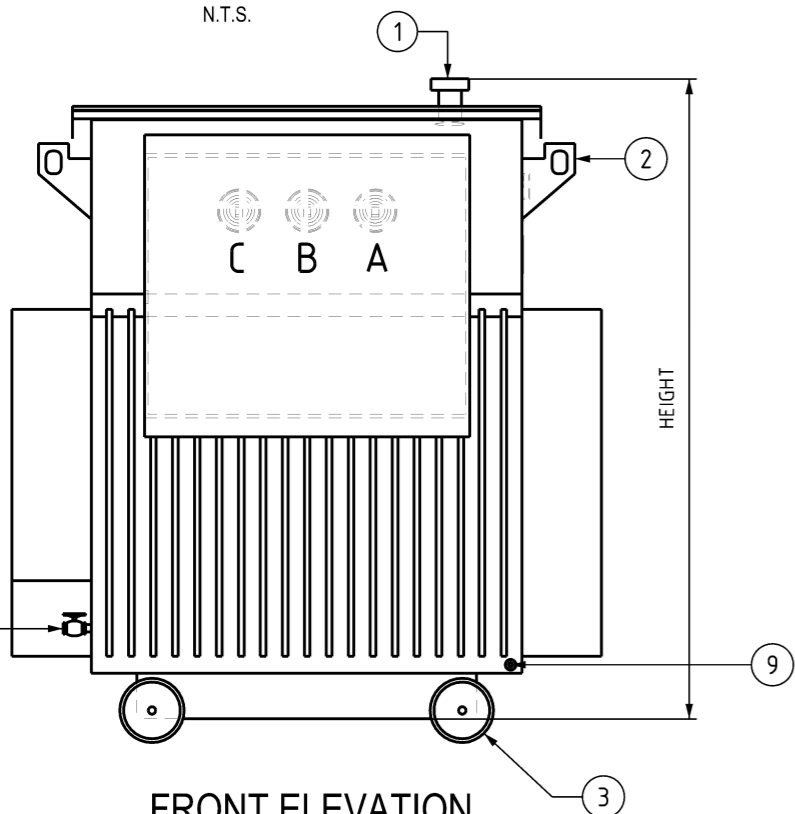
NOTES:

1. TRANSFORMER MUST COMPLY WITH PWC STANDARD TECHNICAL SPECIFICATION STSP 02-007.
2. HV CABLE BOX AND LV TERMINAL COVER TO BE REVERSIBLE.
3. VECTOR GROUPING TO BE Dyn1.
4. HV WINDING TAPS SHALL BE +10% to -5% IN STEPS OF 2.5%.



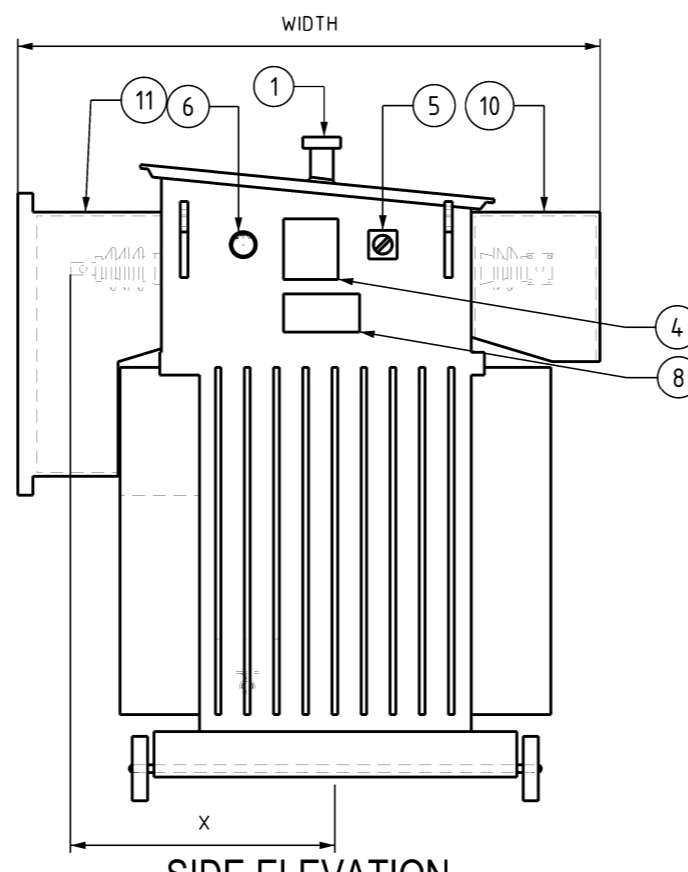
ISOMETRIC VIEW

N.T.S.



FRONT ELEVATION

N.T.S.



SIDE ELEVATION

N.T.S.

| ITEM | DESCRIPTION |
|------|--|
| 1 | FILLER SPOUT cw GASKETED FLANGE PLUG |
| 2 | LIFTING LUG |
| 3 | DETACHABLE WHEELS |
| 4 | NAME PLATE |
| 5 | TAP SELECTOR |
| 6 | FLUSH TYPE OIL GUAGE |
| 7 | DRAIN VALVE 25mm cw GASKETED FLANGE PLUG |
| 8 | NUMBER PLATE BRACKET |
| 9 | EARTH STUD |
| 10 | LV BUSHING COVER |
| 11 | HV CABLE BOX cw BRASS GLAND PLATE |
| 12 | COOLING FINIS |

| SIZE | VOLTAGE | | ITEM NUMBER | HEIGHT | WIDTH | LENGTH | X |
|---------|---------|------|-------------|--------|-------|--------|-----|
| | PRIM | SEC | | | | | |
| 500kVA | 11kV | 433V | 503540 | 1741 | 1992 | 1404 | 801 |
| 750kVA | 11kV | 433V | 503538 | 1741 | 2092 | 1504 | 851 |
| 1000kVA | 11kV | 433V | 503406 | 1671 | 2091 | 1814 | 851 |
| 1500kVA | 11kV | 433V | 503536 | 1671 | 2199 | 2189 | 906 |
| 500kVA | 22kV | 433V | 503537 | 1753 | 1900 | 1440 | 820 |
| 750kVA | 22kV | 433V | 503587 | 1741 | 2082 | 1549 | 921 |
| 1000kVA | 22kV | 433V | 503542 | 1741 | 2152 | 1579 | 934 |

| NO | DESCRIPTION | DRN | DATE | CKD | APPD |
|----|--|-------|--------|--------|------|
| 7 | LV LEVELS UPDATED. | J.R. | OCT'24 | J.R. | B.C. |
| 6 | X DISTANCE AMENDED. | J.R. | NOV'23 | B.C. | B.V. |
| 5 | CORRECT ITEM NUMBERS 503536 & 503587. | P.BH. | SEP'23 | B.C. | B.V. |
| 4 | REARRANGED ITEM TABLE, UPDATED SECONDARY VOLTAGES TO 400V & UPDATED NOTES TO STSP 02-007 | A.N. | SEP'20 | C.C.C. | B.C. |
| 3 | UPDATE ITEM NUMBERS & DIMENSIONS | C.C. | JAN'19 | B.C. | B.V. |
| 2 | OVERALL DIMENSIONS ADDED TO TABLE | A.T. | MAY'14 | B.C. | B.C. |

AMENDMENTS



| DES | | POWER STANDARD DRAWING | |
|-------------------------------|---------------|-------------------------------------|-----------------------------|
| DES | A BUTLER | TRANSFORMERS | |
| DRN | R.INNES | 11kV & 22kV - PLATFORM - INDOOR | |
| CKD | M.BOCK | 500, 750, 1000 AND 1500kVA | |
| APPD | P.DEWAR | A3 | DRAWING NUMBER S02-01-06-07 |
| SCALE | N.T.S. | | |
| ISSUED | NOVEMBER 1996 | A3 | DRAWING NUMBER S02-01-06-07 |
| ALL DIM. IN mm | | | |
| DRAFTING STANDARD TO A.S.1100 | | CAD PRODUCT - DO NOT AMEND MANUALLY | |

