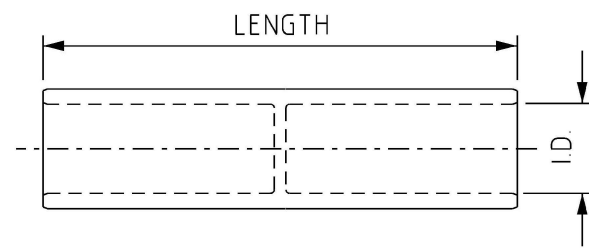
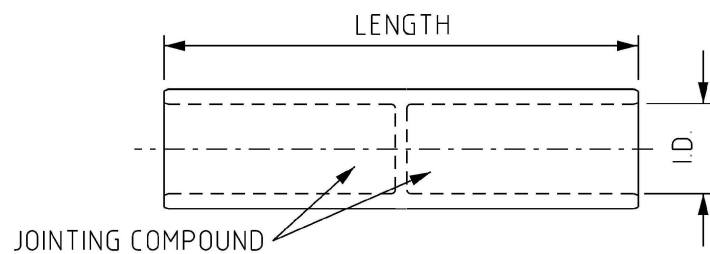


COPPER SPLICES



MATERIAL: ELECTRO-TINNED DRAWN COPPER
SOLID BARRIER AND REAMED ENDS

ALUMINIUM SPLICES



MATERIAL: HIGH CONDUCTIVITY ALUMINIUM
SOLID BARRIER
PREFILLED WITH JOINT COMPOUND

MECHANICAL SHEAR BOLT CONNECTORS

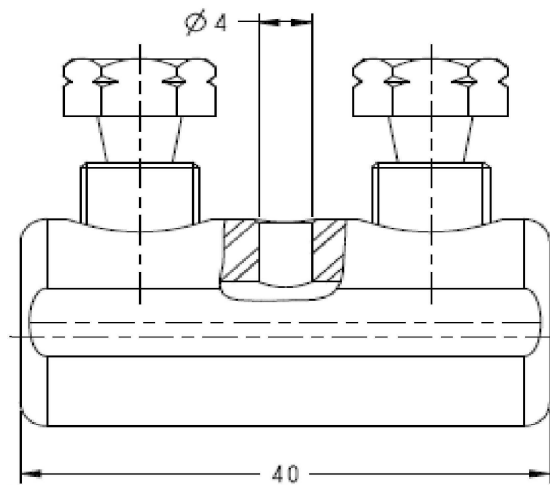


TABLE 1: COPPER SPLICES

ITEM REF.	ITEM NUMBER	CONDUCTOR AREA (SQ.mm)	CONDUCTOR STRANDING	OVERALL LENGTH (mm)	INTERNAL DIAMETER (mm)	NUMBER OF CRIMPS EACH SIDE	CRIMP DIE A/F (mm)	HYDRAULIC TOOL
1	5405	16	7/1.70	44	4.7	1	6.3	12T
2	156422	25	19/1.35	48	7.1	1	7.7	12T
3	5421	35	19/1.53	48	8.4	1	9.2	12T
4	5447	50	19/1.78	54	9.5	1	10.4	12T
5	5462	70	19/2.14	51	11.0	1	11.5	12T
6	5504	120	37/2.03	65	15.5	2	16.5	12T
7	5520	185	37/2.52	65	18.4	2	20.0	12T
8	5546	240	61/2.25	76	21.2	3	23.1	12T
9	401453	25x16	19/1.35 - 7/1.70	50	7.1 - 5.5	1	7.7 - 6.3	12T

TABLE 2: ALUMINIUM SPLICES

ITEM REF.	ITEM NUMBER	CONDUCTOR AREA (SQ.mm)	CONDUCTOR STRANDING	OVERALL LENGTH (mm)	INTERNAL DIAMETER (mm)	NUMBER OF CRIMPS EACH SIDE	CRIMP DIE A/F (mm)	HYDRAULIC TOOL
10	156448	16	7/1.70	70	5.5	1	9.0	12T
11	5694	25	7/2.14 - 19/1.35	70	7.0	1	9.0	12T
12	189068	35	19/1.53	70	8.5	1	9.0	12T
13	5710	50	19/1.78	70	9.5	1	13.2	12T
14	156521	95	19/2.52 - 37/1.78	124	13.0	1	17.3	12T
15	5728	185	37/2.52	124	18.5	1	22.0	12T
16	5744	240	61/2.25	124	21.0	1	28.4	12T
17	500846	185/240	37/2.52 - 61/2.25	124	18.5 - 21.0	1	22.0 - 28.4	12T

TABLE 3: MECHANICAL SHEAR BOLT CONNECTORS

ITEM REF.	ITEM NUMBER	CONDUCTOR AREA (Al/Cu) (SQ.mm)	OVERALL LENGTH (mm)	INTERNAL DIAMETER (Al/Cu)(mm)	HEAD SIZE AF (mm)
23	505130	10/50	40	4.0 - 9.1	10

NOTES:
ITEM 23 IS NOT FOR FLEXIBLE CABLES

NO	DESCRIPTION	DRN	DATE	CKD	APPD
1	REMOVED ITEMS 18,19,20,21, & 22. REFORMATTED TABLE AND ADDED ITEM 23 AND MECHANICAL SHEAR BOLT CONNECTORS DRAWING	J.R.	OCT'24	B.B.	B.V.
0	INITIAL ISSUE	A.N.	MAY'21	A.N.	B.C.
AMENDMENTS					



DES	A. NATHAN	POWER STANDARD DRAWING		
DRN	A. NATHAN	SPLICES COPPER, ALUMINIUM & BI-METAL COMPRESSION FOR STANDARD CONNECTIONS		
CKD	A. NATHAN			
APPD	B. CHEUNG			
SCALE	N.T.S.			
ISSUED	MAY'21	A3	DRAWING NUMBER	S02-01-02-23
ALL DIM. IN	mm			
DRAFTING STANDARD TO A.S.1100		CAD PRODUCT - DO NOT AMEND MANUALLY		1 AMDT