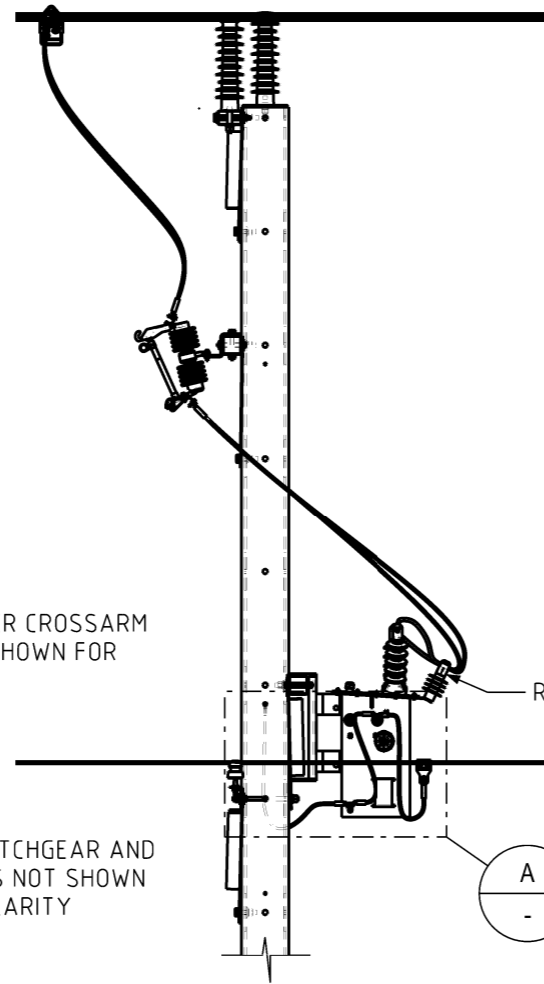
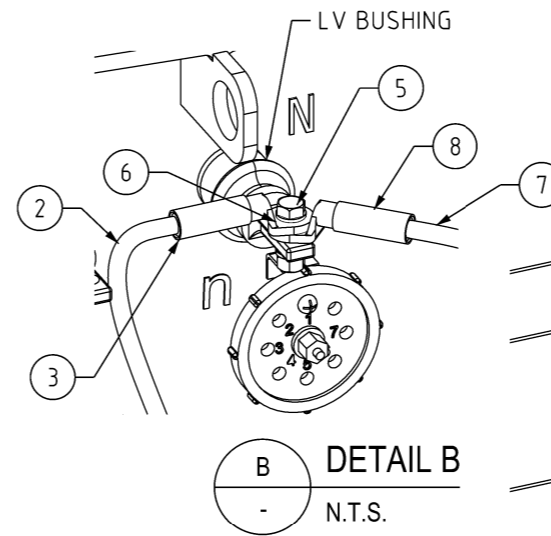


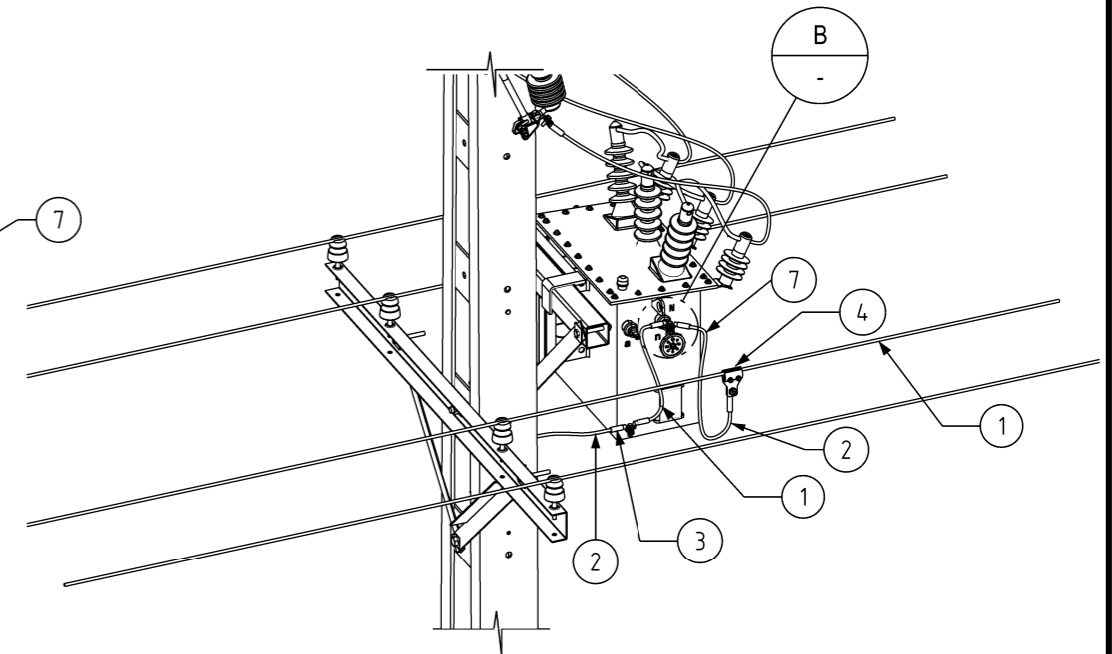
FRONT ELEVATION
1:40



SIDE ELEVATION
1:40



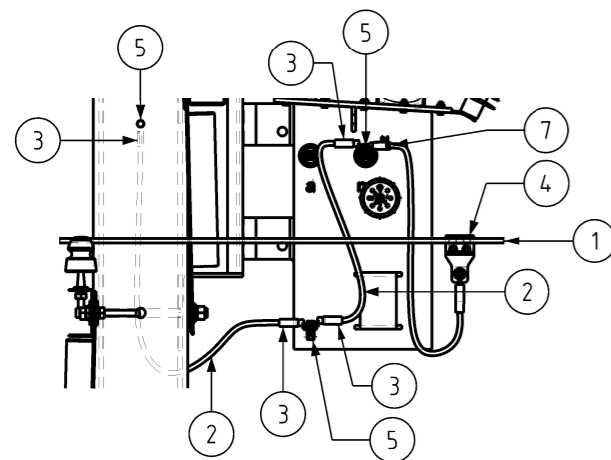
DETAIL B
N.T.S.



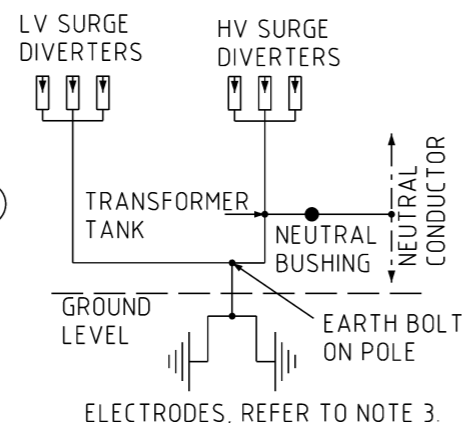
ISOMETRIC DETAIL A
N.T.S.

NOTES:

1. ALL EARTHING CONDUCTOR MUST BE 70 SQMM COPPER WITH YELLOW/GREEN INSULATION (ITEM NUMBER: 401059). ALL CONNECTIONS MUST BE VIA M12 STAINLESS STEEL BOLTS.
2. WHERE HOT DIPPED GALVANIZED TRANSFORMER TANKS ARE USED, CONNECT THE HV SURGE DIVERTER EARTH TO THE TRANSFORMER TANK. WHERE PAINTED TRANSFORMER TANKS ARE INSTALLED, ALL HV SURGE DIVERTER EARTH'S MUST BE BONDED TOGETHER AND CONNECTED TO THE TRANSFORMER EARTH VIA 70 SQMM COPPER CABLE.
3. REFER TO DRAWING NUMBERS S01-02-03-11, S01-02-03-12 OR S01-02-03-13 FOR APPROPRIATE UNDERGROUND EARTHING DETAILS.
4. LV CONNECTIONS NOT SHOWN FOR CLARITY, REFER TO S01-02-06-05.
5. LV SURGE DIVERTERS MUST BE BONDED TOGETHER AND CONNECTED TO THE NEAREST EARTH ATTACHMENT HOLE USING ITEM 5 & 6.
6. COMBINED EARTH RESISTANCE VALUE MUST NOT EXCEED 30 OHMS WHEN HV AND LV MEN CONNECTIONS ARE REMOVED.



DETAIL A
1:20



SINGLE LINE DIAGRAM

| ITEM | QTY | DESCRIPTION | ITEM NUMBER | DRG No. |
|------|-----|--|-------------|--------------|
| 8 | 1 | LUG, COMPRESSION, TO SUIT NEUTRAL CABLE | - | S02-01-02-11 |
| 7 | AR | CABLE, NEUTRAL, SAME SIZE AS ACTIVE PHASES | - | S02-01-01-34 |
| 6 | 1 | M12 SS316 FLAT WASHER | 114280 | S01-01-04-43 |
| 5 | 1 | M12x40 SS316 BOLT C/W NUT | 114066 | S01-01-04-43 |
| 4 | 1 | TEE CLAMP | 2295 | S01-01-04-10 |
| 3 | 3 | LUG-COPPER COMPRESSION - 70 Sq.mm | 5512 | S02-01-02-11 |
| 2 | AR | CONDUCTOR - COPPER - 70 Sq.mm G/Y | 401059 | S02-01-01-23 |
| 1 | AR | NEUTRAL CONDUCTOR | - | - |

MATERIAL SCHEDULE

| NO | DESCRIPTION | DRN | DATE | CKD | APPD |
|----|---|------|--------|--------|------|
| 6 | ADDED ITEMS 7 & 8. CHANGED TAGS TO SUIT ITEMS 7 & 8. UPDATED ITEMS 5 & 6. | A.N. | AN'22 | B.V. | B.C. |
| 5 | ITEM 2 & 5 AMENDED | R.A. | JUL'21 | C.C.C. | B.V. |
| 4 | PG CLAMP REMOVED AND DETAIL A & B ADDED | C.C. | OCT'20 | B.V. | B.C. |
| 3 | TITLEBLOCK & DRAWING NUMBERS FORMATTED | K.T. | JAN'19 | C.C. | C.C. |
| 2 | ITEMS 5 & 6 ADDED, NOTE 5 AMENDED | K.T. | MAY'16 | I.B. | B.C. |
| 1 | ISSUED FOR CONSTRUCTION | C.C. | MAR'12 | A.T. | S.C. |



| DES | | POWER STANDARD DRAWING | |
|----------------|---------------|-------------------------------------|-----------------------------|
| DES | A.TAYLOR | EARTHING SUBSTATION SINGLE POLE | |
| DRN | C.COPPINS | A3 | DRAWING NUMBER S01-02-03-23 |
| CKD | A.TAYLOR | | |
| APPD | A.TAYLOR | SCALE AS SHOWN | |
| ISSUED | DECEMBER 2011 | DRAFTING STANDARD TO A.S.1100 | |
| ALL DIM. IN mm | | CAD PRODUCT - DO NOT AMEND MANUALLY | |

