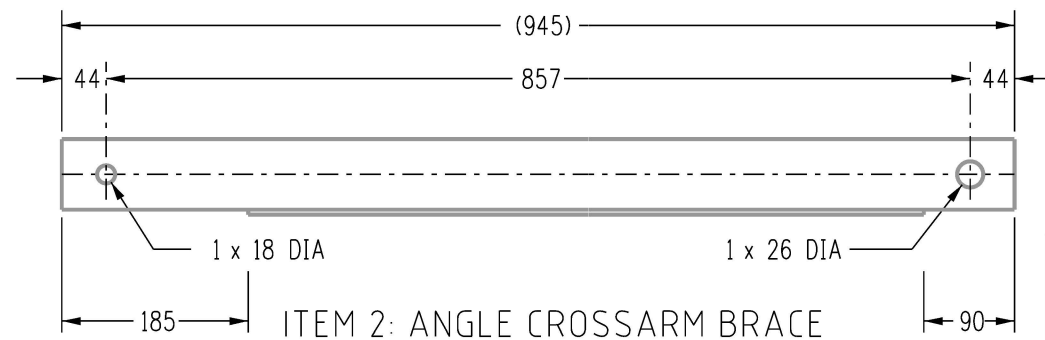
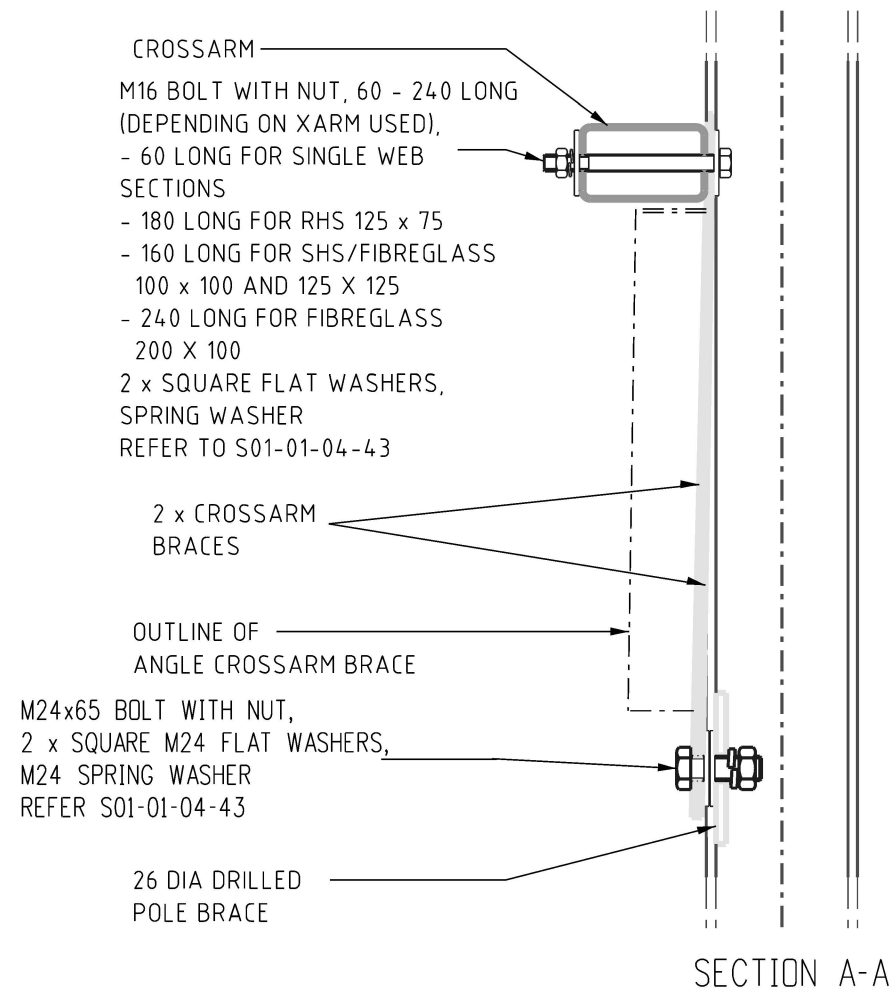


**ITEM 1: FLAT CROSSARM BRACE**  
 MATERIAL: 50 x 5 CF  
 DURAGAL ITEM NUMBER : 298687  
 HOT DIPPED GALVANIZED ITEM NUMBER: 411554



**ITEM 2: ANGLE CROSSARM BRACE**  
 MATERIAL: 75 x 75 x 5 CA  
 DURAGAL ITEM NUMBER : 400815  
 HOT DIPPED GALVANIZED ITEM NUMBER: 411547



**ITEM 3: LARGE FLAT WASHER**  
 MATERIAL: 5 PLATE GALVANISED STEEL  
 M16 65x65mm ITEM NUMBER : 298695  
 M24 75X75mm ITEM NUMBER : 298828  
 REFER TO S01-01-04-43

ITEM DESCRIPTION	ITEM NUMBER
M24 GALV. STEEL SPRING WASHER	114330
M24x65 GALV. STEEL BOLT C/W NUT	400800
M16 GALV. STEEL SPRING WASHER	114322
M16x240 GALV. STEEL BOLT C/W NUT	500857
M16x180 GALV. STEEL BOLT C/W NUT	114561
M16x160 GALV. STEEL BOLT C/W NUT	400805
M16x60 GALV. STEEL BOLT C/W NUT	500875
HARDWARE LIST	

NO	DESCRIPTION	DRN	DATE	CKD	APPD
9	REMOVED "TO BE USED FOR:" TABLE	J.R.	DEC'23	B.C.	B.V.
8	REFORMATTED NOTES, UPDATED DRAWING REFERENCES. ADDED M24 SQUARE WASHER & HARDWARE TABLE.	A.N.	JUL'21	A.N.	B.C.
7	TITLEBLOCK & DRAWING NUMBERS FORMATTED	K.T.	JAN'19	C.C.	C.C.
6	ADDITIONAL USAGES OF ANGLE CROSSARM BRACE	A.T.	APR'13	B.C.	B.C.
5	HOT DIPPED GALVANIZED ITEMS, M16 BOLT LENGTHS ADDED	A.T.	NOV'11	B.C.	S.C.
4	DWG. No. CHANGED FROM S01-01-04-38 TO S01-02-01-38 AND TITLE CHANGED FROM LINE HARDWARE TO ASSEMBLIES	A.S.	JAN'04	R.C.	M.B.
3	WEB CUT-BACK ON ANGLE BRACE CHANGED FROM 150 TO 185	A.S.	JAN'04	M.B.	M.B.
<b>AMENDMENTS</b>					



DES	M. BOCK
DRN	R. INNES
CKD	M. BOCK
APPD	F. ROBSON
SCALE	JULY'00
ISSUED	1 : 7.5
ALL DIM. IN mm	
DRAFTING STANDARD TO A.S.1100	

POWER STANDARD DRAWING	
<b>ASSEMBLIES CROSSARM BRACES AND DETAILS FOR UNIVERSAL POLE CONSTRUCTION</b>	
<b>A3</b>	<b>DRAWING NUMBER S01-02-01-49</b>
CAD PRODUCT - DO NOT AMEND MANUALLY	

