

NOTES:

1. DIAGRAM SHOWS ARRANGEMENT FOR 18M COLUMNS.
2. FOR SINGLE LAMP APPLICATIONS FIT ONE CIRCUIT BREAKER AT POSITION 1.
3. FOR DOUBLE LAMP APPLICATIONS FIT TWO CIRCUIT BREAKERS AT POSITIONS 1 & 2.
4. FOR ADDITIONAL MAINS TEE OFF, CONNECT 25sqmm CABLES (ACTIVE AND NEUTRAL) TO TOP SIDE OF TERMINAL LINK BLOCK.
5. 25sqmm MAINS SHALL BE TERMINATED TO 16SQMM WITHIN THE COLUMN USING COPPER CONNECTIONS ANDS THICK WALLED HEAT SHRINK.
6. ALL CRIMP CONNECTIONS SHALL BE DONE AS PER S02-02-02-10.
7. 25sqmm NEUTRAL CABLES SHALL BE T-CONNECTED INTO POLE USING 3 WAY TERMINAL BLOCK (CABAC TB503) WITH 16sqmm CABLE. TIGHTENING TORQUE 10-14NM.
8. ALL CABLES SHALL HAVE DESTINATION TAG WITH CRITCHLEY K-TYPE TAG SECURED TO THE CABLE WITH NYLON CABLE TIES.
9. WHERE CABLE PITS ARE USED A EARTH JOINT USING 35 / 35 'C' CRIMP IS ALLOWED

CABLE SIZES

INCOMING & OUTGOING MAINS - 25sqmm (35sqmm EARTH)

LANTERN CABLE - FROM TERMINAL LINKS THROUGH TO LANTERN, REFER S02-01-01-14

4sqmm TWIN/ECC
 RED - ACTIVE
 BLACK - NEUTRAL
 YELLOW/GREEN - EARTH

MAIN EARTH TEE OFF - 6sqmm GREEN/YELLOW



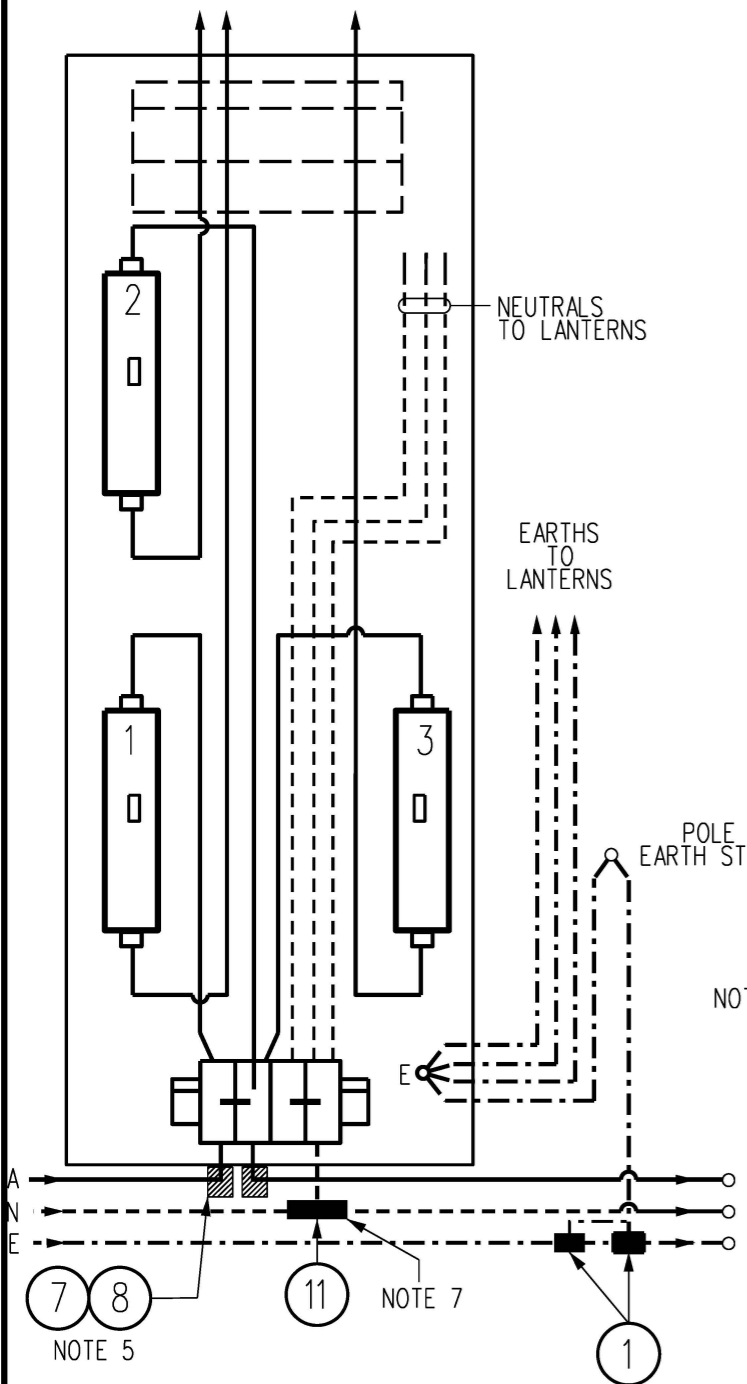
ITEM 11 REFER NOTE 7

TO BE READ IN CONJUNCTION WITH CONSTRUCTION DRG No. S03-01-05-12

ITEM	QTY.	ITEM NUMBER	DESCRIPTION	DRAWING No.
1	2	406821	35sqmm 'C' CLAMP	S01-01-05-08
2	AR	9449	25sqmm CU CABLE - RED	S02-01-01-20
3	AR	9456	25sqmm CU CABLE - BLACK	S02-01-01-20
4	AR	1644	16sqmm CU CABLE - RED	S02-01-01-23
5	AR	1636	16sqmm CU CABLE - BLACK	S02-01-01-23
6	AR	9829	35sqmm CU BARE EARTH WIRE	S01-01-05-05
7	2	505130	10-50sqmm MECHANICAL SHEAR BOLT	S02-01-02-23
8	AR	3129	HEATSHRINK TO SUIT CU LINK	S02-01-02-15
9	AR	2733	4sqmm TWIN/ECC CABLE	S02-01-01-14
10	AR	2774	6sqmm CU Y/GR INSULATED CABLE	S02-01-01-23
11	1	502906	3 WAY TERMINAL BLOCK (SEE NOTE 7)	

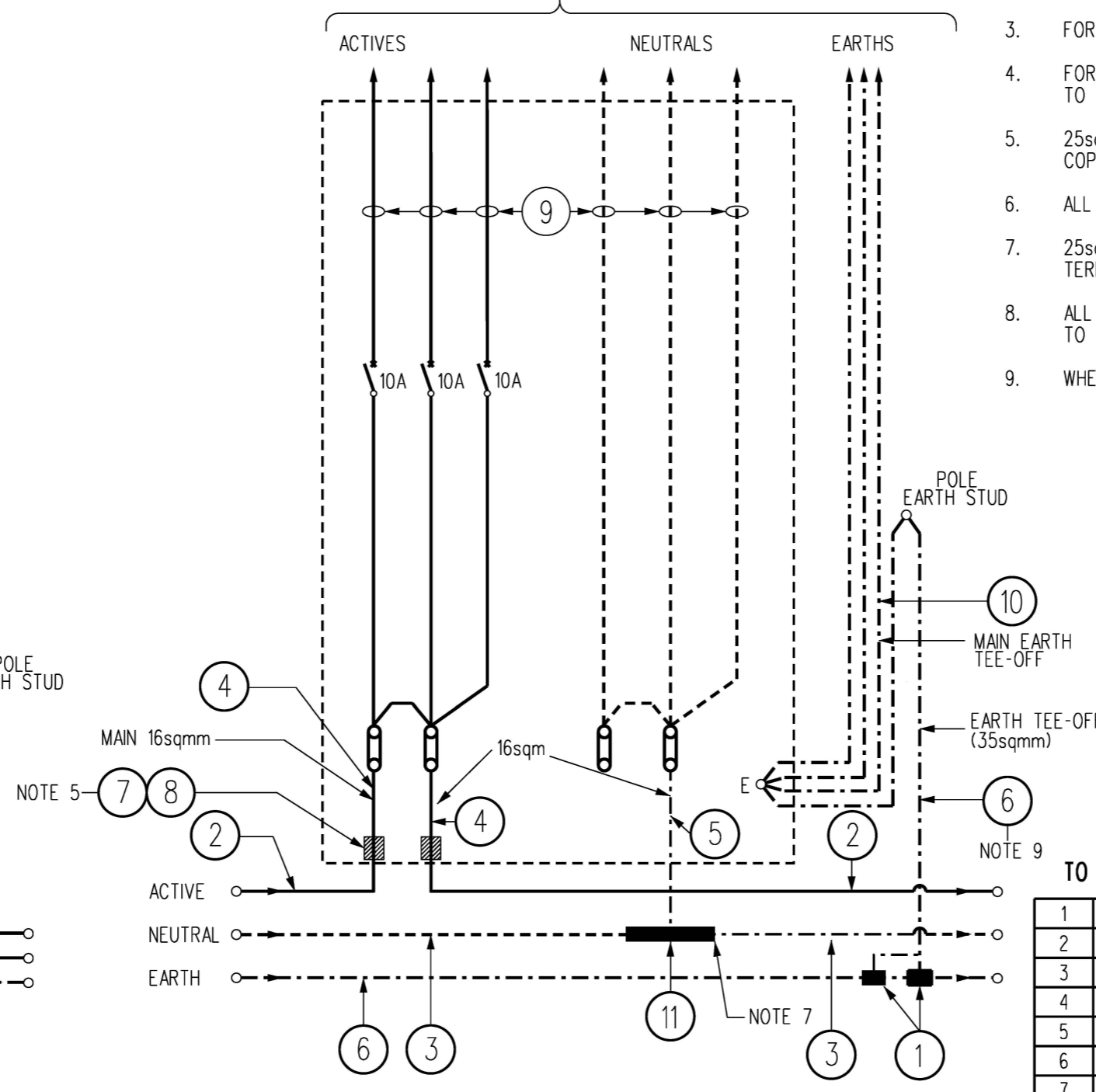
DES	G.S.	POWER STANDARD DRAWING		
DRN	HT	CONTROL DATA SWITCH PACK WIRING DIAGRAM		
CKD	N.F.S.			
APPD	B.T.Kent			
SCALE	NTS			
ISSUED	..	A3	DRAWING NUMBER	S03-01-05-07
ALL DIM. IN mm			DRAWING NUMBER S03-01-05-07	
DRAFTING STANDARD TO A.S.1100		CAD PRODUCT - DO NOT AMEND MANUALLY		13 AMDT

ACTIVES TO LANTERNS



WIRING DIAGRAM

TO LANTERNS



SCHEMATIC WIRING DIAGRAM

NO	DESCRIPTION	DRN	DATE	CKD	APPD
13	CHANGE ITEM 7 FROM 5272 TO 505130	B.B.	NOV'24	B.B.	B.V.
12	NOTES REFORMATTED	R.A.	AUG'21	C.C.C.	B.V.
11	TITLEBLOCK & DRAWING NUMBERS FORMATTED	K.T.	FEB'19	C.C.	C.C.
10	EXTRA EARTH CRIMP ADDED, NOTE 9 ADDED	C.C.	AUG'17	I.B.	B.C.
9	NOTE 7, ITEM 5 UPDATED	A.T.	MAY'16	I.B.	B.C.
8	ITEM 11 ADDED, NOTE 7 AMENDED, MATERIAL TABLE UPDATED	A.S.	FEB'15	I.B.	B.C.
7	NOTE 6 ADDED	A.T.	MAY'12	B.C.	S.C.
6	CABLE SIZES/NOTES 5 ADDED	RAJ	AUG'06	RAJ	S.C.
5	TEE OFF AMENDED	RAJ	AUG'06	RAJ	S.C.

