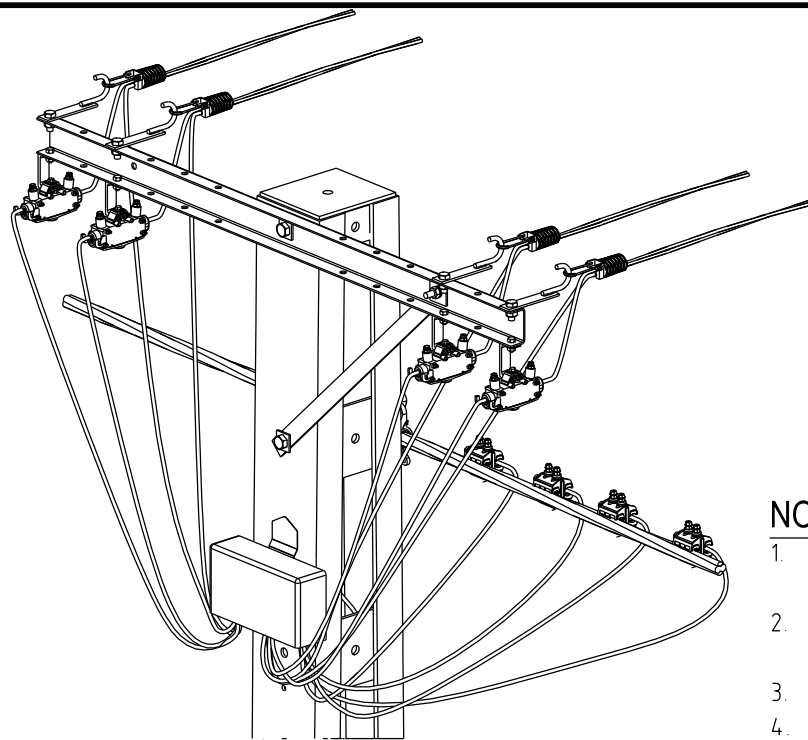
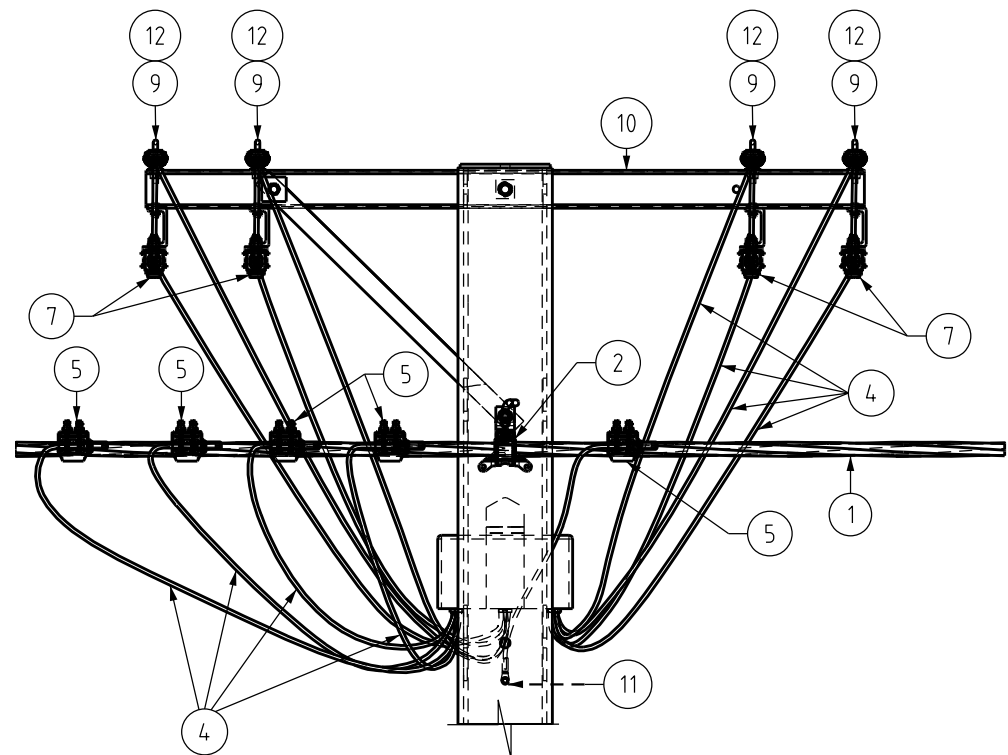


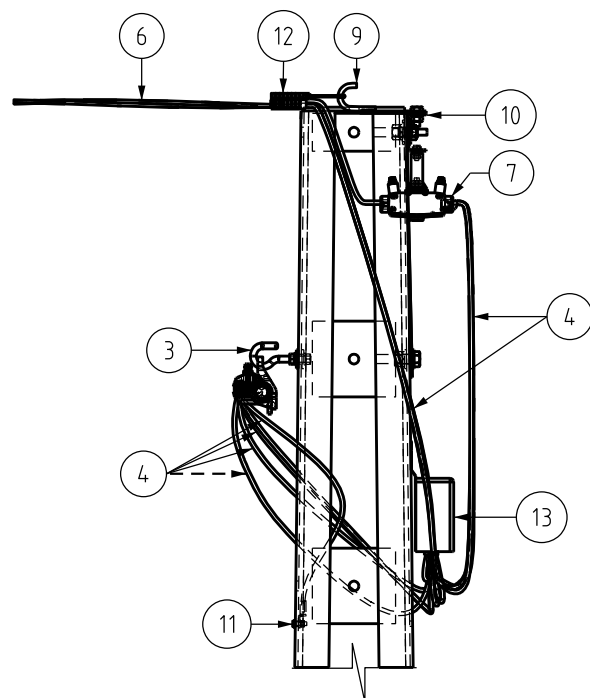
PLAN VIEW
1:20



ISOMETRIC VIEW
1:20



FRONT ELEVATION
1:20



SIDE ELEVATION
1:20

NOTES

1. DRIP LOOPS SHALL BE FORMED AT ALL INSULATION PIERCING CONNECTORS AND SERVICE FUSE CARRIERS
2. ALL INSULATION PIERCING CONNECTORS SHALL BE INSTALLED BELOW THE BUNDLED CABLE.
3. NEUTRAL CABLE SHALL BE BONDED TO THE POLE EARTH AT EVERY POLE.
4. REFER TO S01-01-04-28 FOR SERVICE STRAIN CLAMP APPLICATIONS.
5. SERVICE FUSE CARRIERS SHALL BE FITTED WITH 80A FUSES. ITEM No 10314.
6. ACTIVE SERVICES SHALL BE SPREAD EVENLY ACROSS ACTIVE PHASES
7. ACTIVE TAILS SHALL BE COLOR CODED WITH HEATSHRINK BEFORE CONNECTING TO THE JUNCTION BOX.
8. JUNCTION BOXES SHALL BE POWER FIXED TO THE POLE AT 700mm FROM THE POLE TOP.
9. 3 PHASE SERVICES SHALL USE A 250A BUNDLE BOX AS THE SERVICE FUSE CARRIER FITTED WITH 63A SIZE 1 LV DIN FUSES, ITEM No 10058.

ITEM	QTY	DESCRIPTION	ITEM NUMBER	DWG NUMBER
13	1	SERVICE JUNCTION BOX	206169	S04-01-03-04
12	AR	SERVICE CABLE STRAIN CLAMP	-	S01-01-04-28
11	11	COMPRESSION LUG, 35SQMM COPPER	402689	S02-01-02-11
10	1	SERVICE CROSSARM	298554	S01-01-02-11
9	AR	HOOK STRAP	9324	S01-01-04-07
8	AR	SERVICE FUSE CARRIER MOUNTING BRACKET	406802	S01-01-04-49
7	AR	SERVICE FUSE CARRIER	241109	S01-01-04-49
6	AR	CABLE, SERVICE, 2 x 16 OR 4 x 16SQMM	-	S01-01-07-03
5	AR	CONNECTOR, PIERCING 150/35	415586	S04-01-02-15
4	AR	CABLE Cu PVC 35 sq.mm BLACK	1586	S02-01-01-23
3	AR	HOOK BOLT M16 NON-BREAKAWAY ASSEMBLY	197731, 213876 & 3160	S04-01-02-07
2	1	CLAMP SUSPENSION COMBINATION ABC	198408	S04-01-02-10
1	AR	CABLE LV ABC, 4 x 95 OR 4 x 150SQMM	-	S04-01-01-01

MATERIAL SCHEDULE

3 UPDATED ITEM 3.
2 INCLUDE PAGE 2
1 TITLEBLOCK & DRAWING NUMBER FORMATTED
0 RENUMBERED FROM S01-02-01-30, MATERIALS AND NOTES UPDATED

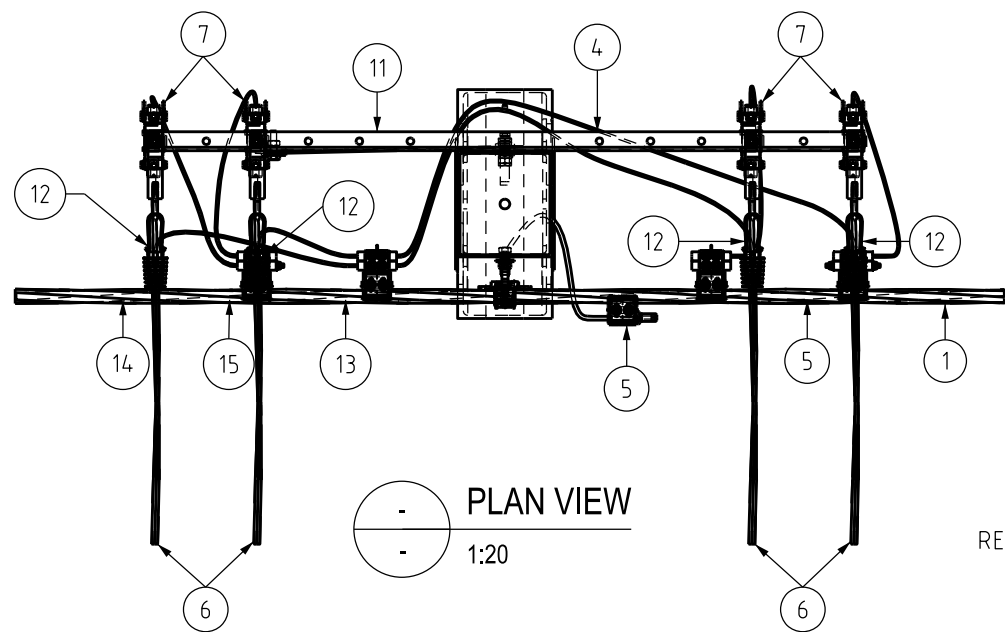
NO	DESCRIPTION	DRN	DATE	CKD	APPD
		A.N.	AUG'21	A.N.	B.V.
		C.C.	OCT'20	B.C.	B.V.
		K.T.	DEC'19	C.C.	C.C.
		C.C.	ARP'12	A.T.	B.C.

AMENDMENTS

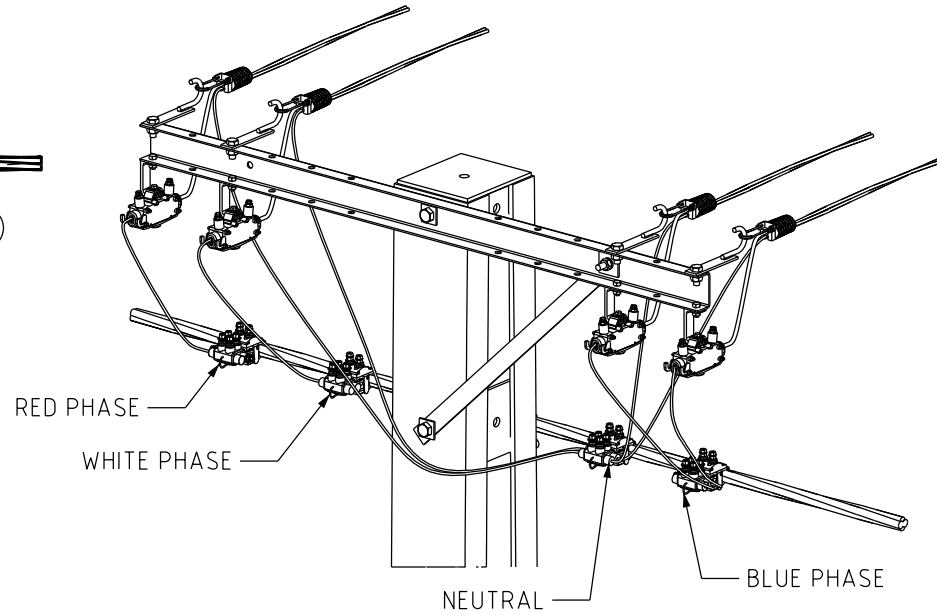


DES		POWER STANDARD DRAWING	
DES	A.TAYLOR	ASSEMBLIES, LV-ABC	
DRN	C.COPPINS	BOLTED POLE CONSTRUCTION	
CKD	L.NEILSEN	3-4 SERVICES	
APPD	A.TAYLOR	INTERMEDIATE CONSTRUCTION (SHEET 1 OF 2)	
SCALE	N.T.S.	A3	DRAWING NUMBER S04-02-01-26_1
ISSUED	APRIL 2012		
ALL DIM. IN mm			
DRAFTING STANDARD TO A.S.1100		CAD PRODUCT - DO NOT AMEND MANUALLY	

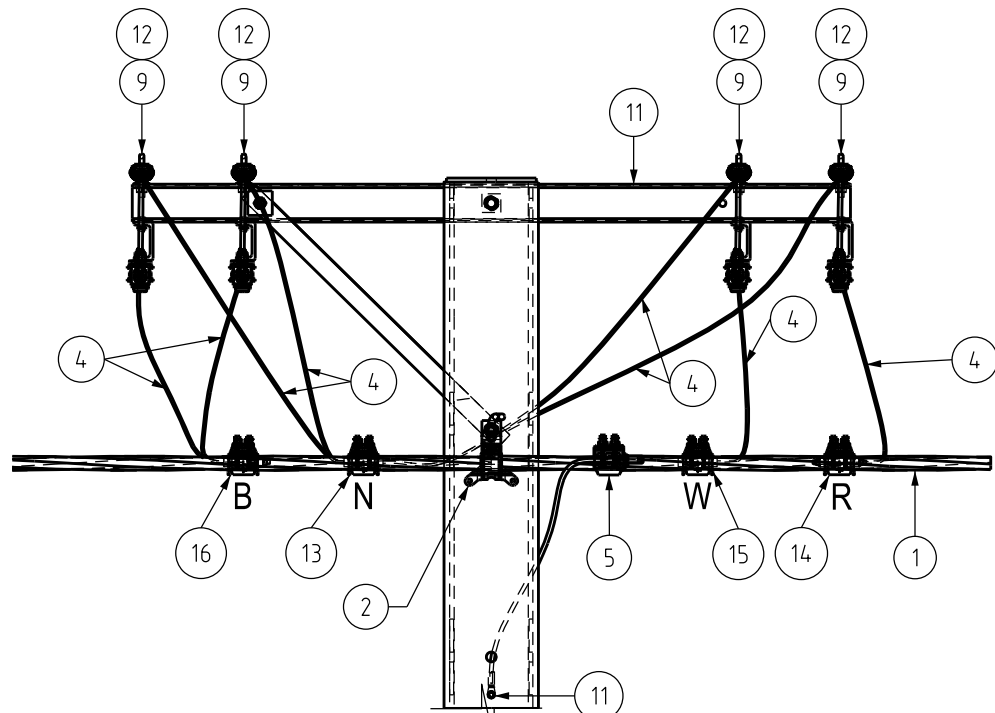




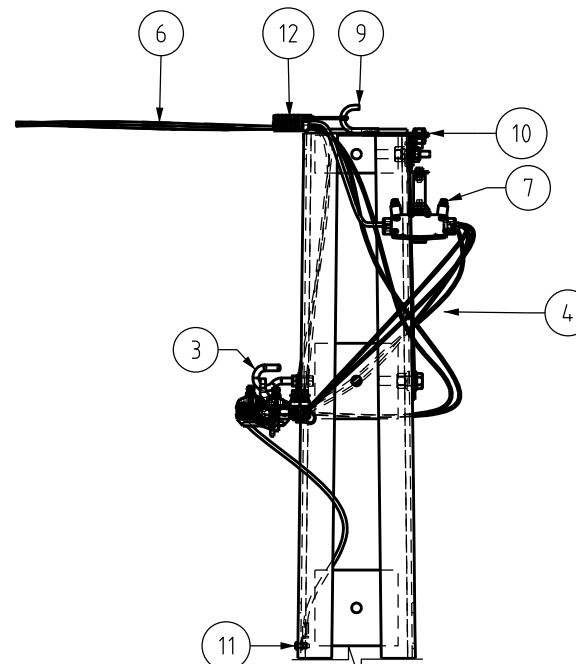
PLAN VIEW
1:20



ISOMETRIC VIEW
1:20



FRONT ELEVATION
1:20



SIDE ELEVATION
1:20

NOTES

1. THIS OPTION IS MANDATORY FOR INDIGENOUS ESSENTIAL SERVICE COMMUNITY NETWORKS
2. DRIP LOOPS SHALL BE FORMED AT ALL INSULATION PIERCING CONNECTORS AND SERVICE FUSE CARRIERS.
3. ALL INSULATION PIERCING CONNECTORS SHALL BE INSTALLED BELOW THE BUNDLED CABLE.
4. NEUTRAL CABLE SHALL BE BONDED TO THE POLE EARTH AT EVERY POLE.
5. REFER TO S01-01-04-28 FOR SERVICE STRAIN CLAMP APPLICATIONS.
6. SERVICE FUSE CARRIERS SHALL BE FITTED WITH 80A FUSES. ITEM No 10314.
7. ACTIVE SERVICES SHALL BE SPREAD EVENLY ACROSS ACTIVE PHASES
8. ACTIVE TAILS SHALL BE COLOR CODED WITH HEATSHRINK BEFORE CONNECTING TO THE NEUTRAL MULTI-PORT CONNECTION.
9. 3 PHASE SERVICES SHALL USE A 250A BUNDLE BOX AS THE SERVICE FUSE CARRIER FITTED WITH 63A SIZE 1 LV DIN FUSES, ITEM No 10058

ITEM	QTY	DESCRIPTION	ITEM NUMBER	DWG NUMBER
16	1	MULT-PORT PIERCING CONNECTOR BLUE	504619	S04-01-02-15
15	1	MULT-PORT PIERCING CONNECTOR WHITE	504618	S04-01-02-15
14	1	MULT-PORT PIERCING CONNECTOR RED	504617	S04-01-02-15
13	1	MULT-PORT PIERCING CONNECTOR NEUTRAL	504616	S04-01-02-15
12	AR	SERVICE CABLE STRAIN CLAMP	-	S01-01-04-28
11	11	COMPRESSION LUG, 35SQMM COPPER	402689	S02-01-02-11
10	1	SERVICE CROSSARM	298554	S01-01-02-11
9	AR	HOOK STRAP	9324	S01-01-04-07
8	AR	SERVICE FUSE CARRIER MOUNTING BRACKET	406802	S01-01-04-49
7	AR	SERVICE FUSE CARRIER	241109	S01-01-04-49
6	AR	CABLE, SERVICE, 2 x 16 OR 4 x 16SQMM	-	S01-01-07-03
5	1	CONNECTOR, PIERCING 150/35	415586	S04-01-02-15
4	AR	CABLE Cu PVC 35 sq.mm BLACK	1586	S02-01-01-23
3	AR	HOOK BOLT M16 NON-BREAKAWAY ASSEMBLY	197731, 213876 & 3160	S04-01-02-07
2	1	CLAMP SUSPENSION COMBINATION ABC	198408	S04-01-02-10
1	AR	CABLE LV ABC, 4 x 95 OR 4 x 150SQMM	-	S04-01-01-01

MATERIAL SCHEDULE

NO	DESCRIPTION	DRN	DATE	CKD	APPD
1	UPDATED ITEM 3 ISSUED FOR CONSTRUCTION	A.N. C.C.	AUG'21 DEC'20	A.N. B.C.	B.V. B.V.
AMENDMENTS					



DES	A.TAYLOR	POWER STANDARD DRAWING		
DRN	C.COPPINS	ASSEMBLIES, LV-ABC		
CKD	L.NEILSEN	BOLTED POLE CONSTRUCTION		
APPD	A.TAYLOR	3-4 SERVICES INTERMEDIATE CONSTRUCTION		
SCALE	N.T.S.	IES COMMUNITIES (SHEET 2 OF 2)		
ISSUED	OCTOBER 2020	A3	DRAWING NUMBER	S04-02-01-26_2
ALL DIM. IN mm				
DRAFTING STANDARD TO A.S.1100		CAD PRODUCT - DO NOT AMEND MANUALLY		1 AMD T