

DRIESCHER MINEX-C KKT
ITEM NUMBER: 413954

NOTES:

- ALL MINEX-C RMUs ARE FITTED WITH THE ANTI-BURST SYSTEM INSTALLED IN THE RMU TANK AS WELL AS THE CABLE COMPARTMENTS.
- ALL RMUs SHALL BE RATED AT 24KV, REFER TO STANDARDS BULLETIN S01-061.
- SWITCH ISOLATORS (K CUBICLES) ARE RATED AT 630A.
- FUSED SWITCHES (T CUBICLES) ARE RATED AT 200A.
- RMU FAULT RATING IS 25KA.1SEC.
- ALL BUSHINGS SHALL BE 630A IN ACCORDANCE WITH DIN 47636.
- ALL CABLE DESTINATION AND SWITCH NUMBER TAGS SHALL BE ATTACHED TO THE RMU AT THE SPECIFIED LOCATIONS WITH FACTORY PROVIDED SCREWS.
- HORTSMANN COMPASS B FAULT INDICATORS SHALL BE FITTED TO SWITCH CUBICLE 1 ON EVERY MINEX-C RMU. COMPASS B FAULT INDICATORS SHALL BE FITTED WITH 3 PHASE CT'S. IF A SUMMATION CT IS FITTED REPLACE IT WITH ITEM NUMBER 501788 AND RECONFIGURE THE FAULT INDICATOR.
- ALL CUBICLES SHALL BE FITTED WITH HORTSMANN WEGA 1.2C VOLTAGE INDICATORS.
- ALL FUSES USED IN MINEX-C RMUs SHALL BE 292MM LONG DIN 43625 STANDARD. REFER TO S02-01-04-03 FOR FURTHER DETAILS.
- ALL CABLE TERMINATIONS SHALL BE STRAIGHT SCREENED DEAD-BREAK TERMINATIONS, REFER TO TABLE B FOR ITEM NUMBERS.
- PHASE SEQUENCE IN K CUBICLES SHALL BE RED - WHITE - BLUE FROM THE FRONT TO BACK OF THE RMU.
- PHASE SEQUENCE IN T CUBICLES SHALL BE RED - WHITE - BLUE FROM LEFT TO RIGHT AS THE OPERATOR LOOKS AT THE RMU.



EXAMPLE OF CT INSTALLATION

TABLE B

| XLPE CABLE TERMINATION BOOTS, 11kV | |
|------------------------------------|-------------|
| CABLE SIZE sq mm | ITEM NUMBER |
| 95 ALUMINIUM | 414778 |
| 240 ALUMINIUM | 414779 |
| 300 COPPER | 414780 |
| 400 ALUMINIUM | 501664 |
| XLPE CABLE TERMINATION BOOTS, 22kV | |
| CABLE SIZE sq mm | ITEM NUMBER |
| 120 COPPER | 414781 |
| 240 ALUMINIUM | 414783 |
| 240 COPPER | 414782 |

| ITEM No | DESCRIPTION |
|---------|--|
| 1 | HORTSMANN WEGA 1.2C VOLTAGE PRESENCE INDICATOR |
| 2 | CABLE DESTINATION TAG |
| 3 | SWITCH ISOLATOR OPERATING MECHANISM |
| 4 | EARTH SWITCH OPERATING MECHANISM |
| 5 | SWITCH NUMBER TAG |
| 6 | ABS OPERATION INDICATOR |
| 7 | HORTSMANN COMPASS B FAULT INDICATOR |
| 8 | RMU DATA NAME PLATE |
| 9 | INSULATION SPARK TEST POINT |
| 10 | INSULATION GAS PRESSURE INDICATOR |
| 11 | FUSE SWITCH OPERATION MECHANISM |
| 12 | FUSE EARTHING SWITCH OPERATION MECHANISM |
| 13 | FUSE INDICATOR MIMIC |
| 14 | SCREW-IN TYPE PALM CONNECTOR (SET OF 3) (*504912). |

- 4 ADDED CT INSTALLATION EXAMPLE.
- 3 ITEM 14 ADDED.AMENDED NOTES 1, 2, 3, 4, 8, 10, 11, 13 & 14.
- 2 TITLEBLOCK & DRAWING NUMBER FORMATTED
- 1 NOTE 8 AMENDED, NOTE 9 REMOVED
- 0 ISSUED FOR CONSTRUCTION

P.BH. MAY'24 B.C. B.V.
P.BH. OCT'22 B.C. B.V.
K.T. FEB'19 C.C. C.C.
A.T. JAN'14 A.T. B.C.
C.M. NOV'12 A.T. B.C.



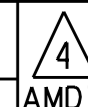
DES B.CHEUNG
DRN C.McLAREN
CKD A.TAYLOR
APPD B.CHEUNG
SCALE N.T.S.
ISSUED NOV'12
ALL DIM. IN mm
DRAFTING STANDARD TO A.S.1100

POWER STANDARD DRAWING

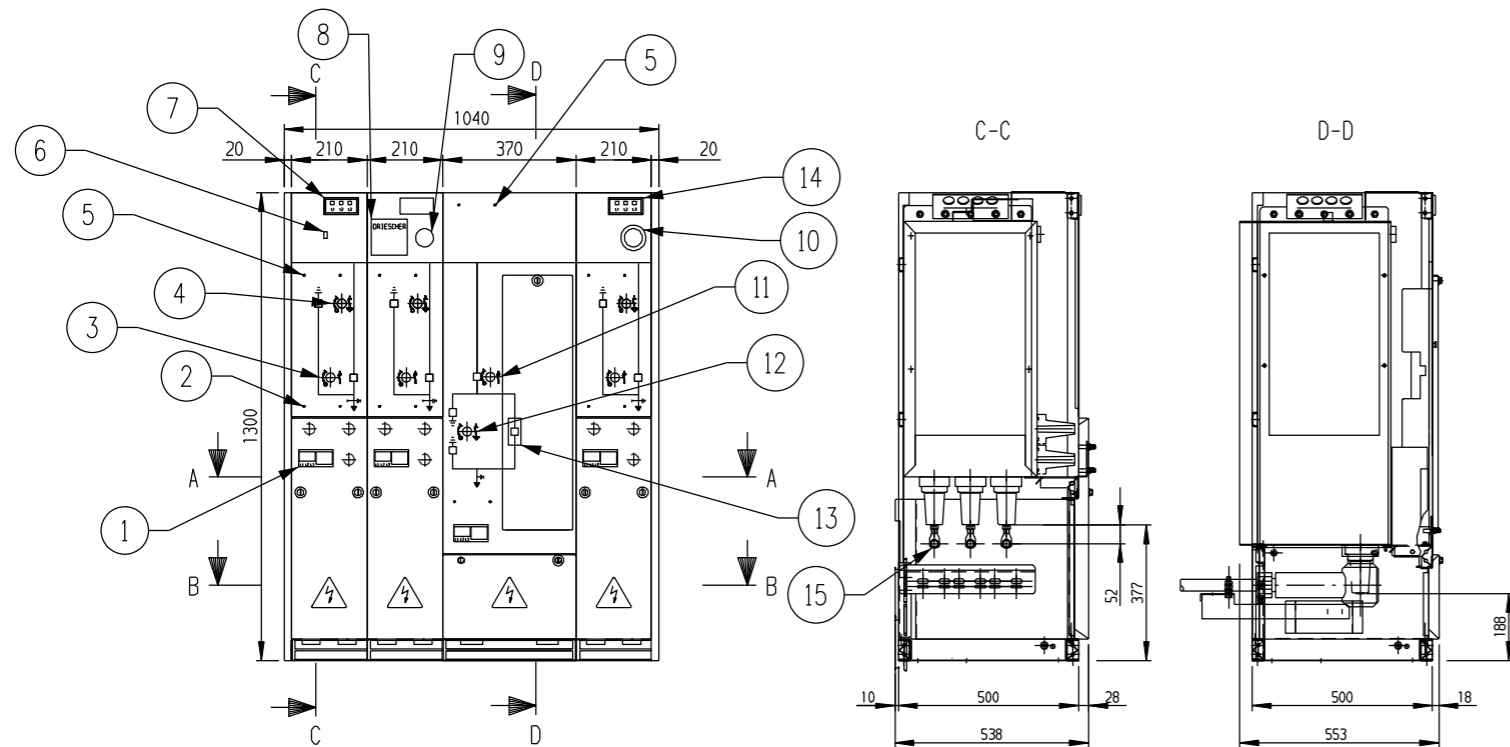
SWITCHGEAR
DRIESCHER MINEX-C RMU
SHEET 1 OF 3 TYPE KKT

A3 DRAWING NUMBER S02-01-04-22_1

CAD PRODUCT - DO NOT AMEND MANUALLY

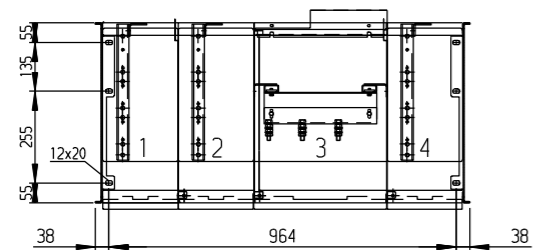
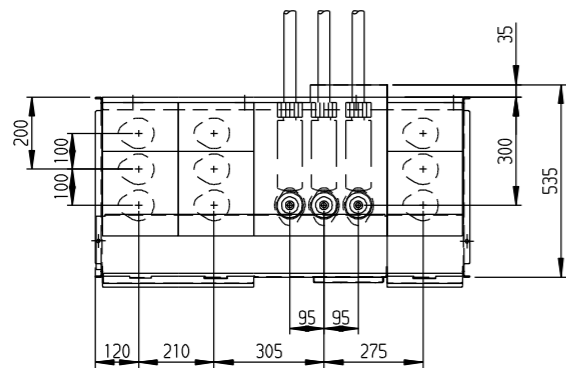


| NO | DESCRIPTION | DRN | DATE | CKD | APPD |
|------------|-------------|-----|------|-----|------|
| AMENDMENTS | | | | | |

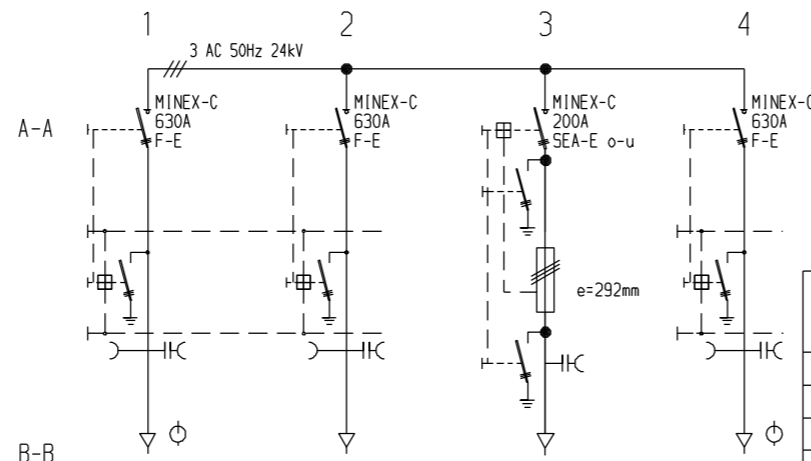


NOTES:

1. ALL MINEX-C RMUs ARE FITTED WITH THE ANTI-BURST SYSTEM INSTALLED IN THE RMU TANK AS WELL AS THE CABLE COMPARTMENTS.
2. ALL RMUs SHALL BE RATED AT 24KV, REFER TO STANDARDS BULLETIN S01-061.
3. SWITCH ISOLATORS (K CUBICLES) ARE RATED AT 630A.
4. FUSED SWITCHES (T CUBICLES) ARE RATED AT 200A.
5. RMU FAULT RATING IS 25KA.1SEC.
6. ALL BUSHINGS SHALL BE 630A IN ACCORDANCE WITH DIN 47636.
7. ALL CABLE DESTINATION AND SWITCH NUMBER TAGS SHALL BE ATTACHED TO THE RMU AT THE SPECIFIED LOCATIONS WITH FACTORY PROVIDED SCREWS.
8. HORTSMANN COMPASS B FAULT INDICATORS SHALL BE FITTED TO SWITCH CUBICLE 1 ON EVERY MINEX-C RMU. COMPASS B FAULT INDICATORS SHALL BE FITTED WITH 3 PHASE CT'S. IF A SUMMATION CT IS FITTED IT SHALL BE REPLACED WITH ITEM NUMBER 501788 AND RECONFIGURE THE FAULT INDICATOR.
9. 4-WAY KKTK RMUs SHALL HAVE CUBICLE 4 FITTED WITH A HORTSMANN COMPASS A FAULT INDICATOR. COMPASS A FAULT INDICATORS SHALL BE FITTED WITH 3 PHASE CT'S. IF A SUMMATION CT IS FITTED REPLACE IT WITH ITEM NUMBER 501788 AND RECONFIGURE THE FAULT INDICATOR.
10. ALL CUBICLES SHALL BE FITTED WITH HORTSMANN WEGA 1.2C VOLTAGE INDICATORS.
11. ALL FUSES USED IN MINEX-C RMUs SHALL BE 292MM LONG DIN 43625 STANDARD. REFER TO S02-01-04-03 FOR FURTHER DETAILS.
12. ALL CABLE TERMINATIONS SHALL BE STRAIGHT SCREENED DEAD-BREAK TERMINATIONS, REFER TO TABLE B FOR ITEM NUMBERS.
13. PHASE SEQUENCE IN K CUBICLES SHALL BE RED - WHITE - BLUE FROM THE FRONT TO BACK OF THE RMU.
14. PHASE SEQUENCE IN T CUBICLES SHALL BE RED - WHITE - BLUE FROM LEFT TO RIGHT AS THE OPERATOR LOOKS AT THE RMU.



MINEX-C 24kV/630A



DRIESCHER MINEX-C KKTK
ITEM NUMBER: 500479

TABLE B
XLPE CABLE TERMINATION BOOTS, 11kV

| CABLE SIZE sq mm | ITEM NUMBER |
|------------------|-------------|
| 95 ALUMINIUM | 414778 |
| 240 ALUMINIUM | 414779 |
| 300 COPPER | 414780 |
| 400 ALUMINIUM | 501664 |

XLPE CABLE TERMINATION BOOTS, 22kV

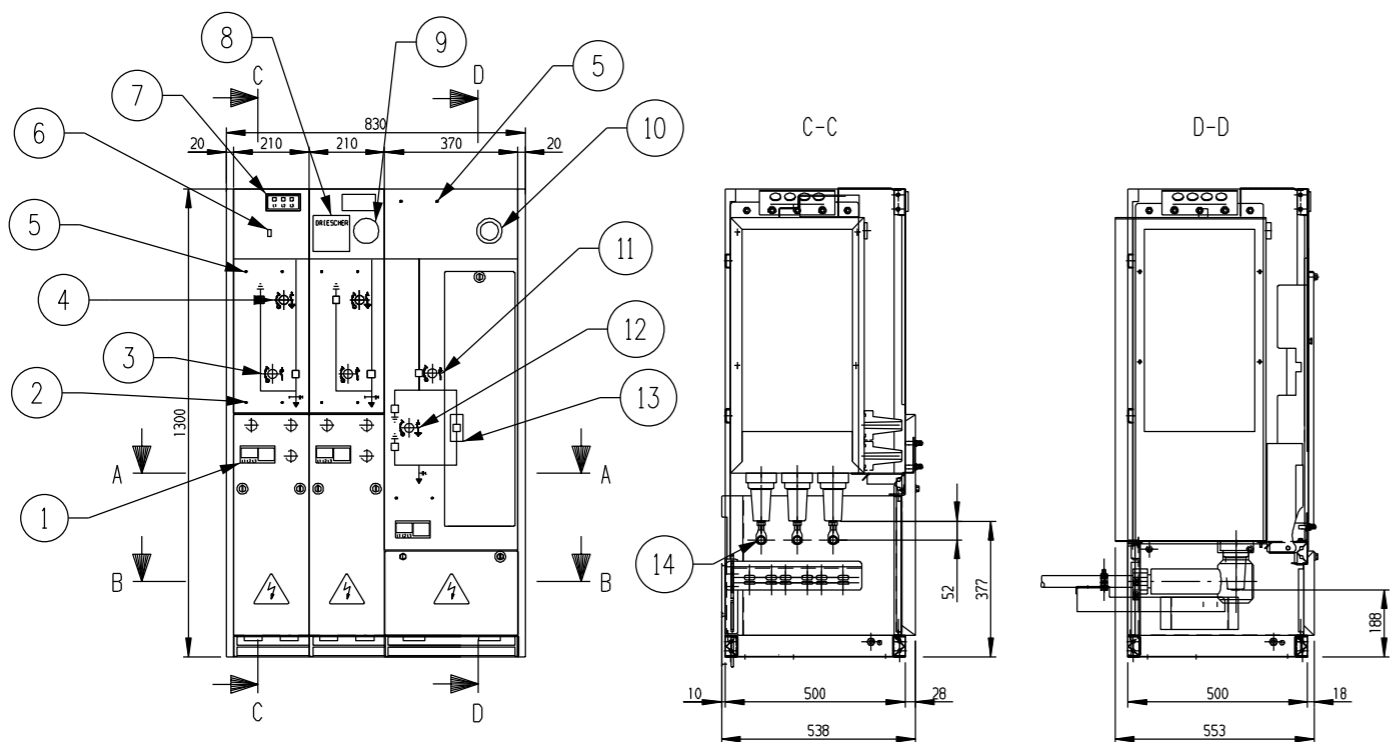
| CABLE SIZE sq mm | ITEM NUMBER |
|------------------|-------------|
| 120 COPPER | 414781 |
| 240 ALUMINIUM | 414783 |
| 240 COPPER | 414782 |

| ITEM No | DESCRIPTION |
|---------|--|
| 1 | HORTSMANN WEGA 1.2C VOLTAGE PRESENCE INDICATOR |
| 2 | CABLE DESTINATION TAG |
| 3 | SWITCH ISOLATOR OPERATING MECHANISM |
| 4 | EARTH SWITCH OPERATING MECHANISM |
| 5 | SWITCH NUMBER TAG |
| 6 | ABS OPERATION INDICATOR |
| 7 | HORTSMANN COMPASS B FAULT INDICATOR |
| 8 | RMU DATA NAME PLATE |
| 9 | INSULATION SPARK TEST POINT |
| 10 | INSULATION GAS PRESSURE INDICATOR |
| 11 | FUSE SWITCH OPERATION MECHANISM |
| 12 | FUSE EARTHING SWITCH OPERATION MECHANISM |
| 13 | FUSE INDICATOR MIMIC |
| 14 | HORTSMANN COMPASS A FAULT INDICATOR |
| 15 | SCREW-IN TYPE PALM CONNECTOR (SET OF 3) (*504912). |

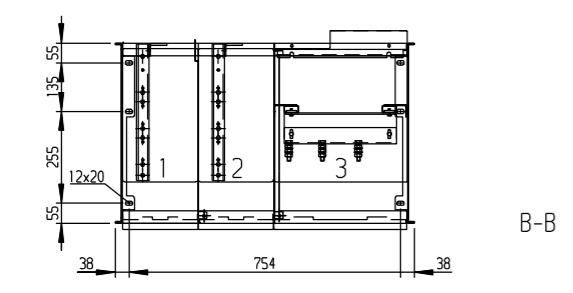
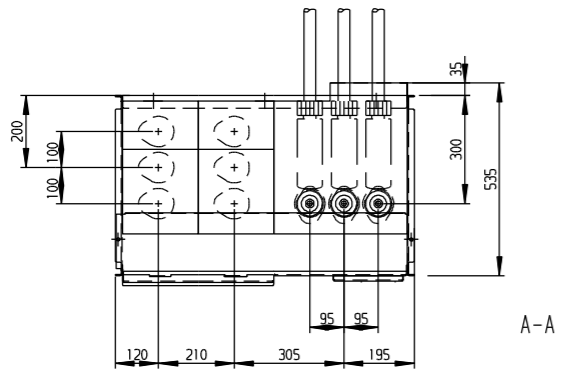
| 4 | SHEET 1 UPDATED. | P.BH. | MAY'24 | B.C. | B.V. |
|------------|---|-------|--------|------|------|
| 3 | ITEM 15 ADDED. AMENDED NOTES 1, 2, 3, 4, 8, 9, 10, 11, 13 & 14. | P.BH. | OCT'22 | B.C. | B.V. |
| 2 | TITLEBLOCK & DRAWING NUMBER FORMATTED | K.T. | FEB'19 | C.C. | C.C. |
| 1 | NOTE 8 AND 9 AMENDED | A.T. | JAN'14 | A.T. | B.C. |
| 0 | ISSUED FOR CONSTRUCTION | C.M. | NOV'12 | A.T. | B.C. |
| NO | DESCRIPTION | DRN | DATE | CKD | APPD |
| AMENDMENTS | | | | | |



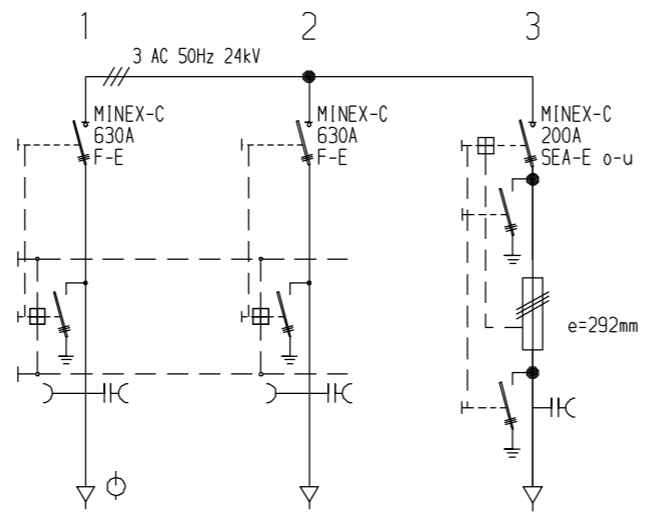
| | | | | | |
|----------|-----------|--|----------------|----------------|--|
| DES | B.CHEUNG | POWER STANDARD DRAWING | | | |
| DRN | C.McLAREN | SWITCHGEAR DRIESCHER MINEX-C RMU SHEET 2 OF 3 TYPE KKTK | | | |
| CKD | A.TAYLOR | | | | |
| APPD | B.CHEUNG | | | | |
| SCALE | N.T.S. | | | | |
| ISSUED | NOV'12 | A3 | DRAWING NUMBER | S02-01-04-22_2 | |
| ALL DIM. | IN mm | | | | |



- NOTES:
1. ALL MINEX-C RMUs ARE FITTED WITH THE ANTI-BURST SYSTEM INSTALLED IN THE RMU TANK AS WELL AS THE CABLE COMPARTMENTS.
 2. ALL RMUs SHALL BE RATED AT 24KV, REFER TO STANDARDS BULLETIN S01-061.
 3. SWITCH ISOLATORS (K CUBICLES) ARE RATED AT 630A.
 4. FUSED SWITCHES (T CUBICLES) ARE RATED AT 200A.
 5. RMU FAULT RATING IS 25KA.1SEC.
 6. ALL BUSHINGS SHALL BE 630A IN ACCORDANCE WITH DIN 47636.
 7. ALL CABLE DESTINATION AND SWITCH NUMBER TAGS SHALL BE ATTACHED TO THE RMU AT THE SPECIFIED LOCATIONS WITH FACTORY PROVIDED SCREWS.
 8. HORTSMANN COMPASS B FAULT INDICATORS SHALL BE FITTED TO SWITCH CUBICLE 1 ON EVERY MINEX-C RMU. COMPASS B FAULT INDICATORS SHALL BE FITTED WITH 3 PHASE CT'S. IF A SUMMATION CT IS FITTED REPLACE IT WITH ITEM NUMBER 501788 AND RECONFIGURE THE FAULT INDICATOR.
 10. ALL CUBICLES SHALL BE FITTED WITH HORTSMANN WEGA 1.2C VOLTAGE INDICATORS.
 11. ALL FUSES USED IN MINEX-C RMUs SHALL BE 292MM LONG DIN 43625 STANDARD. REFER TO S02-01-04-03 FOR FURTHER DETAILS.
 12. ALL CABLE TERMINATIONS SHALL BE STRAIGHT SCREENED DEAD-BREAK TERMINATIONS, REFER TO TABLE B FOR ITEM NUMBERS.
 13. PHASE SEQUENCE IN K CUBICLES SHALL BE RED - WHITE - BLUE FROM THE FRONT TO BACK OF THE RMU.
 14. PHASE SEQUENCE IN T CUBICLES SHALL BE RED - WHITE - BLUE FROM LEFT TO RIGHT AS THE OPERATOR LOOKS AT THE RMU.



MINEX-C 24kV/630A



DRIESCHER MINEX-C KKT
ITEM NUMBER: 413953

TABLE B
XLPE CABLE TERMINATION BOOTS, 11kV

| CABLE SIZE sq mm | ITEM NUMBER |
|------------------|-------------|
| 95 ALUMINIUM | 414778 |
| 240 ALUMINIUM | 414779 |
| 300 COPPER | 414780 |
| 400 ALUMINIUM | 501664 |

XLPE CABLE TERMINATION BOOTS, 22kV

| CABLE SIZE sq mm | ITEM NUMBER |
|------------------|-------------|
| 120 COPPER | 414781 |
| 240 ALUMINIUM | 414783 |
| 240 COPPER | 414782 |

| ITEM No | DESCRIPTION |
|---------|--|
| 1 | HORTSMANN WEGA 1.2C VOLTAGE PRESENCE INDICATOR |
| 2 | CABLE DESTINATION TAG |
| 3 | SWITCH ISOLATOR OPERATING MECHANISM |
| 4 | EARTH SWITCH OPERATING MECHANISM |
| 5 | SWITCH NUMBER TAG |
| 6 | ABS OPERATION INDICATOR |
| 7 | HORTSMANN COMPASS B FAULT INDICATOR |
| 8 | RMU DATA NAME PLATE |
| 9 | INSULATION SPARK TEST POINT |
| 10 | INSULATION GAS PRESSURE INDICATOR |
| 11 | FUSE SWITCH OPERATION MECHANISM |
| 12 | FUSE EARTHING SWITCH OPERATION MECHANISM |
| 13 | FUSE INDICATOR MIMIC |
| 14 | SCREW-IN TYPE PALM CONNECTOR (SET OF 3) (*504912). |

| 4 | SHEET 1 UPDATED. | P. BH. | MAY'24 | B. C. | B. V. |
|------------|--|--------|--------|-------|-------|
| 3 | ITEM 14 ADDED. AMENDED NOTES 1, 2, 3, 4, 8, 10, 11, 13 & 14. | P. BH. | OCT'22 | B. C. | B. V. |
| 2 | TITLEBLOCK & DRAWING NO FORMATTED | C. C. | AUG'19 | M. S. | C. C. |
| 1 | NOTE 8 AMENDED, NOTE 9 REMOVED | A. T. | JAN'14 | A. T. | B. C. |
| 0 | ISSUED FOR CONSTRUCTION | C. M. | NOV'12 | A. T. | B. C. |
| NO | DESCRIPTION | DRN | DATE | CKD | APPD |
| AMENDMENTS | | | | | |

| | | | |
|----------|------------|---|--|
| DES | B. CHEUNG | POWER STANDARD DRAWING | |
| DRN | C. McLAREN | SWITCHGEAR DRIESCHER MINEX-C RMU SHEET 3 OF 3 TYPE KKT | |
| CKD | A. TAYLOR | | |
| APPD | B. CHEUNG | | |
| SCALE | N. T. S. | A3 | DRAWING NUMBER S02-01-04-22_3 |
| ISSUED | NOV'12 | | |
| ALL DIM. | IN mm | DRAFTING STANDARD TO A.S.1100 | |
| | | CAD PRODUCT - DO NOT AMEND MANUALLY | |
| | | | |