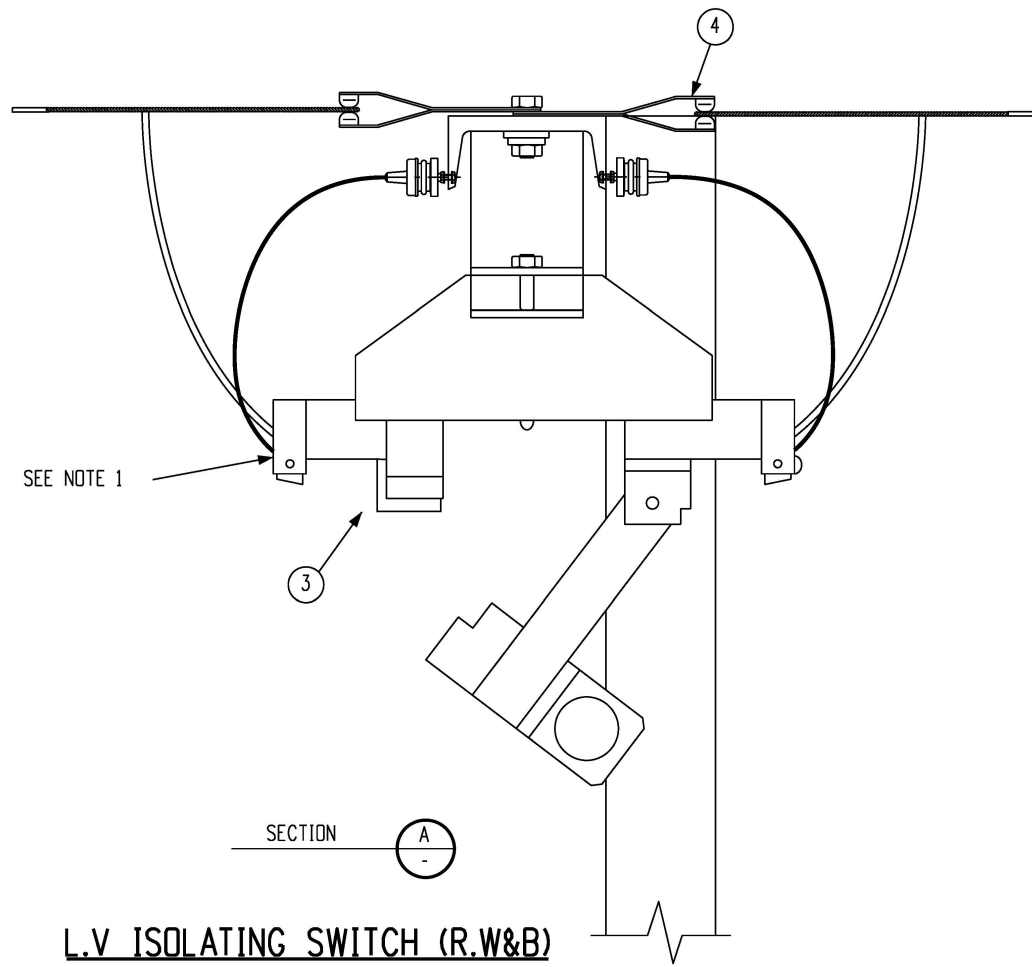
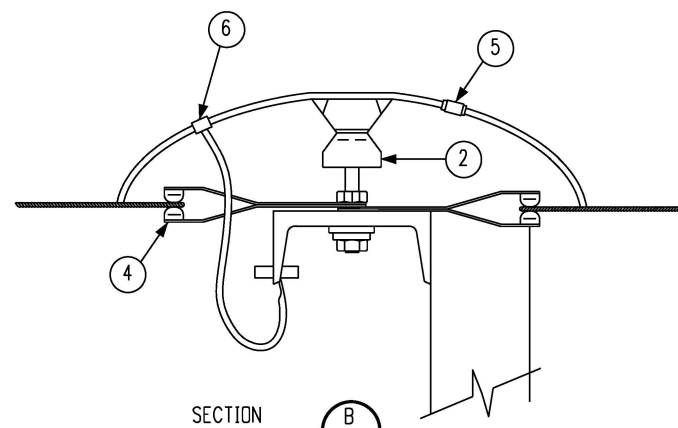


**ISOLATING SWITCHES**



**L.V. ISOLATING SWITCH (R.W&B)**



**NEUTRAL BRIDGING**

**NOTE**

1. TERMINATE CONDUCTOR DIRECT INTO TERMINAL EXCEPT WHERE TERMINATED ON POLES WITHIN 100m OF COAST LINE WITHIN 100m TERMINATE CONDUCTOR VIA BI-METAL STALK LUG BRUSH DIRECT CONNECTIONS WITH ANTI OXIDENT GREASE
2. 800 A ISOLATING SWITCHES TO BE USED WITH BOLT ON BI-METAL LUGS TO SUIT CONDUCTOR SIZE USED
3. LV SURGE DIVERTER ARRANGEMENT REFER TO S01-02-02-18.
4. TYPE A EARTHING REQUIRED FOR ALL NEW POLE INSTALLATION REFER TO S01-02-03-19.
5. FOR INSTANCES WHERE A LV LINK INTERFERES WITH STAYS/STRAPS FOR BOLTED POLE CONSTRUCTION, A HOLE SHALL BE DRILLED IN THE CROSSARM TO RELOCATE THE LINK TO AVOID INTERFERENCE ISSUES. MINIMUM CLEARANCES SHALL BE MAINTAINED.

ITEM	DESCRIPTION	DWG No.
6	CLAMP - NEUTRAL BOND	S01-01-04-17
5	CLAMP - PARALLEL GROOVE	S01-01-04-25
4	L.V. SHACKLE TYPE S.T.	S01-01-04-03
3	ISOLATING SWITCH 630A, 800A	S01-01-06-01
2	L.V SHACKLE AND PIN INSULATOR ASSEMBLY TYPE 'SP 30'	S01-02-01-06

NO	DESCRIPTION	DRN	DATE	CKD	APPD
10	ADDED NOTE 5. FORMATTED TABLE.	J.R.	DEC'23	B.C.	B.V.
9	LV SURGE DIVERTERS ADDED. NOTES 3 & 4 ADDED. AMENDED ITEM 3 DESCRIPTION. SECTION VIEW OF STREET LIGHTING TERMINATIONS REMOVED.	P.BH.	JAN'23	B.C.	B.V.
8	TITLEBLOCK & DRAWING NUMBERS FORMATTED	K.T.	JAN'19	C.C.	C.C.
7	REDRAWN IN CAD	C.C.	OCT'10	A.T.	S.C.
AMENDMENTS					

  
**PowerWater**  
 NORTHERN TERRITORY

DES	.	POWER STANDARD DRAWING		
DRN	.	POLE TOP UNITS ISOLATING SWITCHES LOW VOLTAGE		
CKD	.			
APPD	.	A3	DRAWING NUMBER	S01-02-02-14
SCALE	.			
ISSUED	.			
ALL DIM. IN mm				
DRAFTING STANDARD TO A.S.1100		CAD PRODUCT - DO NOT AMEND MANUALLY		