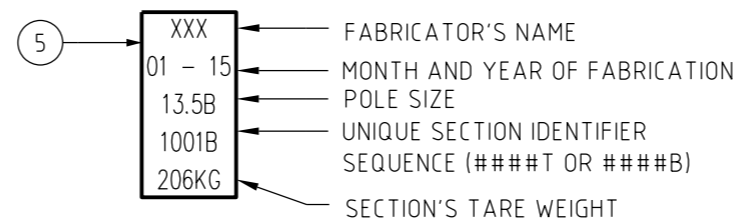


**SIDE VIEW**  
SCALE 1:40



**ITEM 5: POLE DATA NAMEPLATE (EXAMPLE)**  
NTS

**TWO PIECE SPLICED POLE 13.5B - ITEM NUMBER : 503626**

TOTAL MASS 13.5B - TOP - 500Kg  
TOTAL MASS 13.5B - BOTTOM - 206Kg

**TWO PIECE SPLICED POLE 13.5C - ITEM NUMBER : 503627**

TOTAL MASS 13.5C - TOP - 614Kg  
TOTAL MASS 13.5C - BOTTOM - 254Kg

**NOTES:**

- CENTRE OF GRAVITY / LIFTING POINT SHALL BE MARKED ON EACH SECTION
- TWO PIECE SPLICED POLE IS NOT THE PREFERRED OPTION FOR GREENFIELD SITES
- REFER TO S01-02-01-69 FOR INSTALLATION DETAILS
- APPLICATION OF THIS POLE IS RESTRICTED FOR INTERNAL POWER NETWORKS USE ONLY. FOR OTHER APPLICATIONS AND APPROVALS, CONTACT POWER NETWORKS STANDARDS
- POLES TO COMPLY WITH PWC DOCUMENTS STSP 01-002
- ALL WELDS TO BE 6mm FILLET CONTINUOUS WELD UNO EXCEPT ANTICLIMB PLATE WHICH IS TO HAVE 6mm FILLET 150mm LONG AT BOTH ENDS AND CENTRE
- FOR SPLICE DETAILS REFER TO DRG S01-01-01-40

ITEM	QTY. 13.5B	QTY. 13.5C	MATERIAL DESCRIPTION
1	2	-	617 x 150 x 25 FMS. FLANGE PLT. 26 DIA HOLES, REFER DRG S01-01-01-40
2	-	2	617 x 200 x 25 FMS. FLANGE PLT. 26 DIA HOLES, REFER DRG S01-01-01-40
3	4	-	128 x 200 x 8 FMS. STIFFENER PLT., REFER DRG S01-01-01-40
4	-	4	174 x 200 x 8 FMS. STIFFENER PLT., REFER DRG S01-01-01-40
5	2	2	POLE DATA NAMEPLATE
6	-	-	REFER DRG S01-01-01-10 FOR ALL OTHER POLE MATERIALS

NO	DESCRIPTION	DRN	DATE	CKD	APPD
3	CORRECTED INACCURATE VALUES FROM 97500 TO 9750	J.R.	FEB'24	B.C.	B.V.
2	AMENDED WEB CORNERS FOR HDG. AMENDED IMAGERY. NOTE 3 REMOVED. ADDED NOTES 6, 7, & 8. ADDED ITEM 6 POLE DATA NAMEPLATE AMENDED.	P.G.	MAR'23	B.V.	B.C.
1	TITLEBLOCK & DRAWING NUMBERS FORMATTED	K.T.	DEC'18	C.C.	C.C.
0	ISSUED FOR CONSTRUCTION	J.N.	FEB'16	A.T.	I.B.

DES		POWER STANDARD DRAWING	
J.NOYNAY		TWO PIECE SPLICED POLE	
A.TAYLOR		LINE 13.5B AND 13.5C	
I.BASHIR		BOLTED CONNECTIONS TYPE	
-			
AS NOTED		A3	DRAWING NUMBER S01-01-01-35
MAR'16			
IN mm			
A.S.1100		CAD PRODUCT - DO NOT AMEND MANUALLY	

