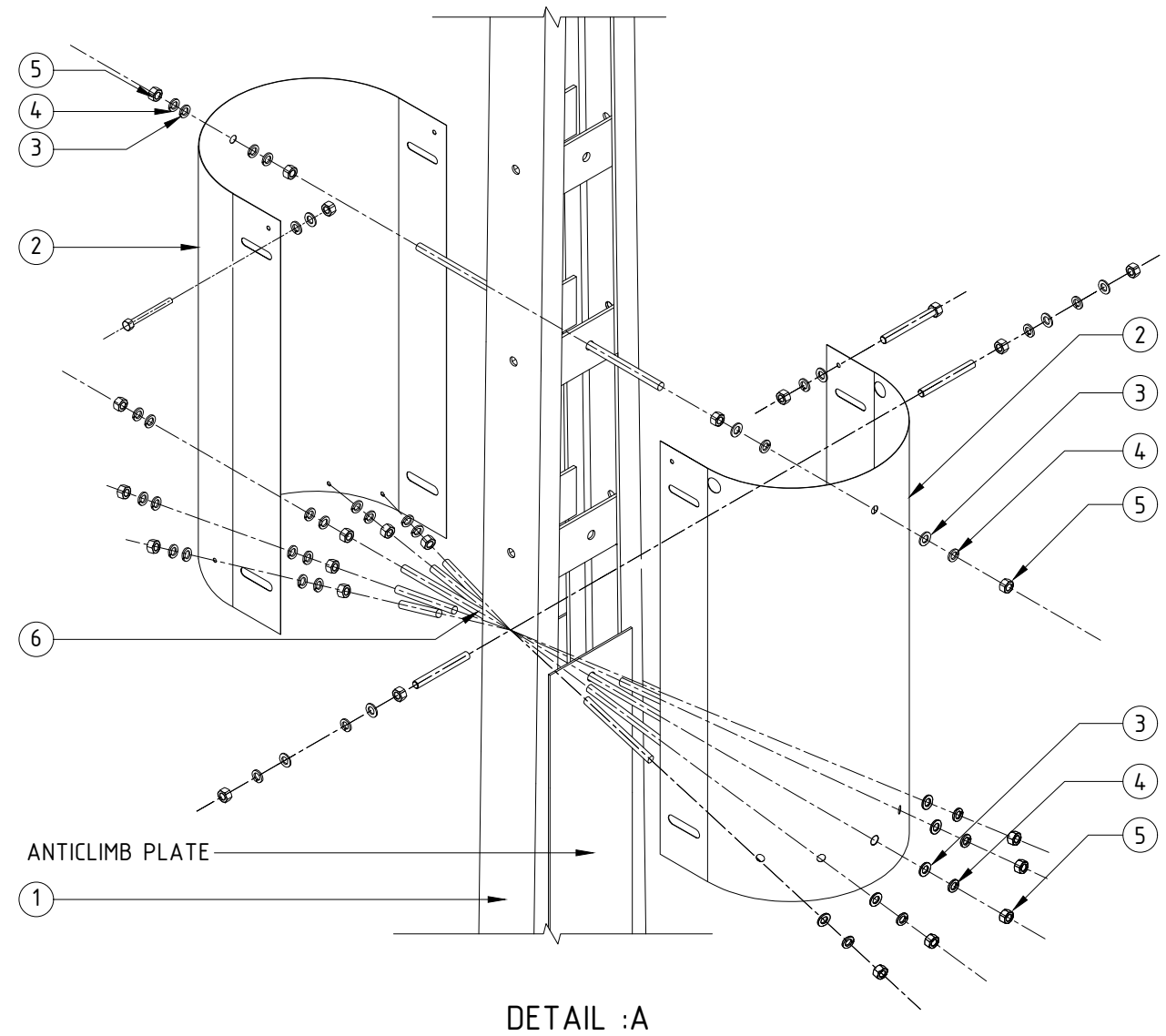


ISOMETRIC VIEW

SCALE : NTS



DETAIL : A

NOTES :

1. THE TUBE ANTICLIMB DEVICE IS TO BE USED ONLY WHEN THE USE OF THE ANTICLIMB HOOD CANNOT BE INSTALLED DUE TO INTERFERENCE ISSUES SUCH AS CONDUITS, CABLES AND ABS ACTUATION RODS
2. TUBE TO BE ATTACHED TO TOP OF ANTICLIMB PLATE AND TWO BRACES ABOVE (WHERE POSSIBLE) HOLES ARE TO BE DRILLED AS REQUIRED
3. TUBE MAY BE INSTALLED AT 90° ROTATION IF CABLE OR CONDUIT IS ON WEAK FACE OF THE POLE

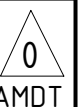
ITEM	QTY	DESCRIPTION	DRAWING NUMBER	ITEM NUMBER
7		M24 x 220mm BOLT	S01-01-04-43	400803
6		M24 x 500mm BOLT	S01-01-04-43	415097
5		M24 NUT	S01-01-04-43	503757
4		M24 HELICAL SPRING WASHER	S01-01-04-43	114330
3		24mm ROUND WASHER	S01-01-04-43	415097
2		TUBULAR ANTICLIMB DEVICE	S01-01-08-11	505172
1		POLE	-	-

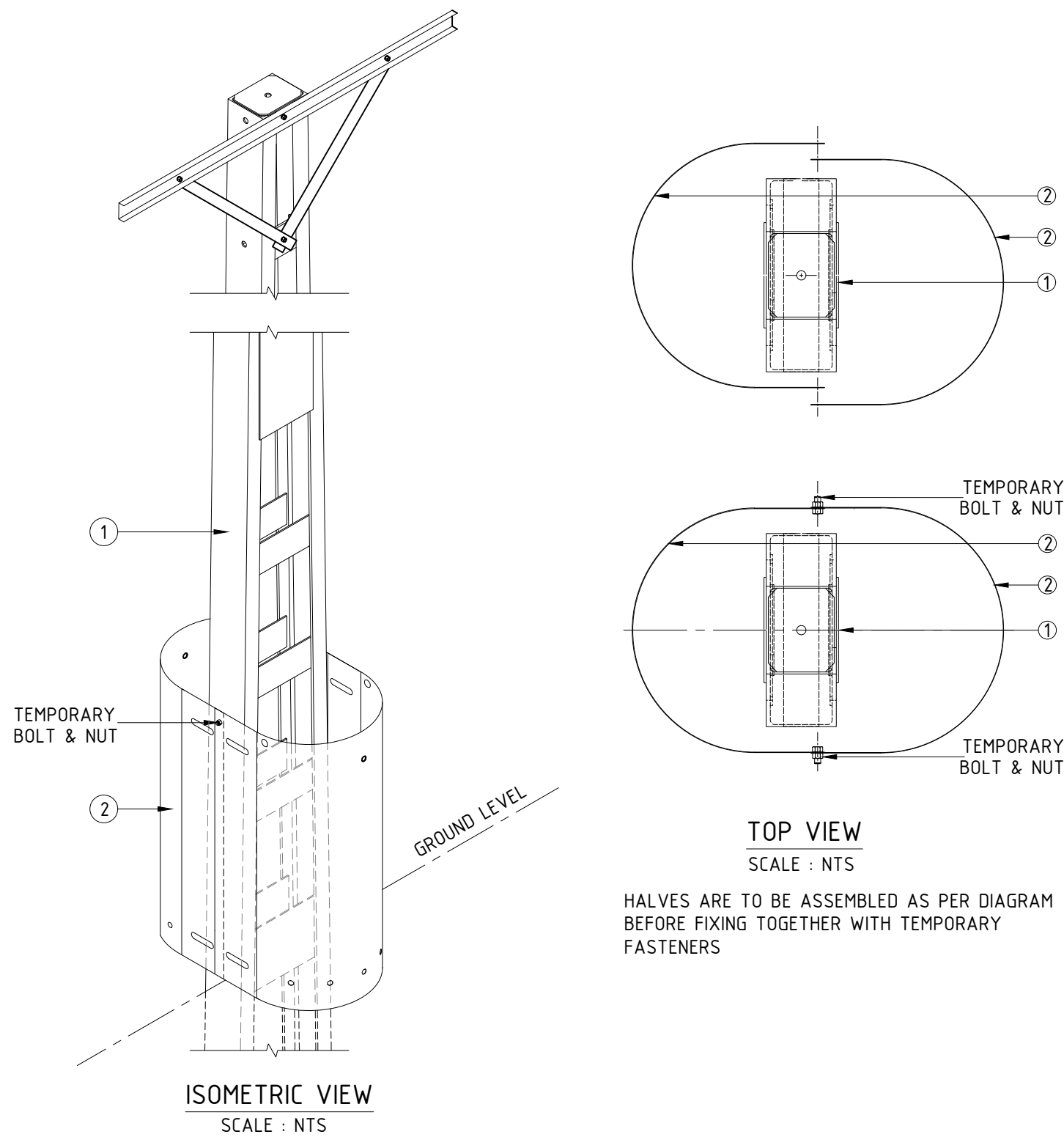
M A T E R I A L S C H E D U L E

NO	DESCRIPTION	DRN	DATE	CKD	APPD
0	ISSUED FOR CONSTRUCTION.	J.R.	FEB'25	B.V.	B.C.
AMENDMENTS					

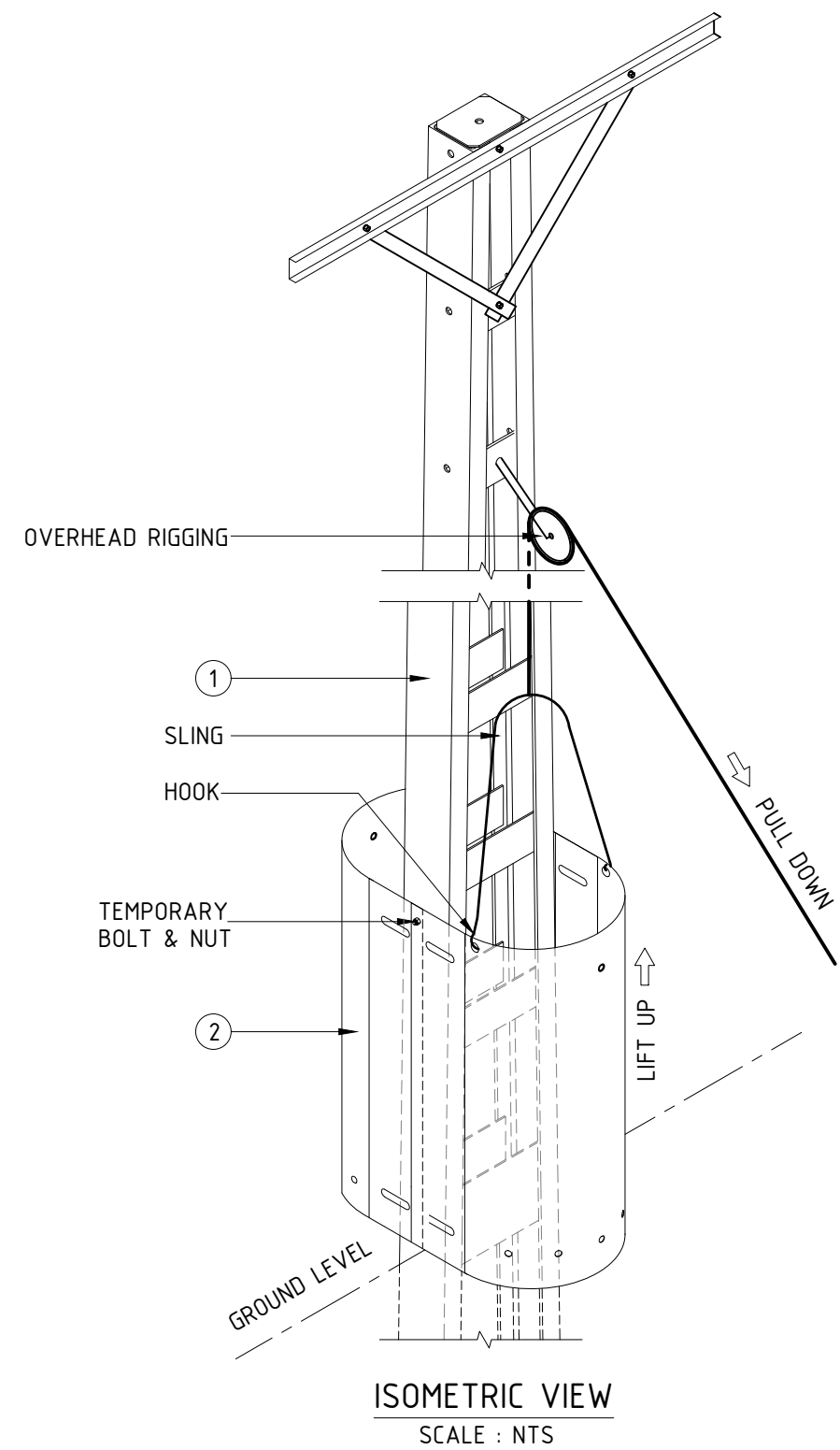


DES	POWER STANDARD DRAWING		
DRN	P.G.	ASSEMBLIES	
CKD	B.C.	TUBE ANTICLIMB DEVICE	
APPD	B.V.	GENERAL ARRANGEMENT (SHEET 1 OF 3)	
SCALE	NTS	A3	DRAWING NUMBER S01-02-01-77
ISSUED	OCT'23		
ALL DIM. IN mm			
DRAFTING STANDARD TO A.S.1100			NE300/3718





STEP -1 : ASSEMBLE TWO HALVES AT GROUND LEVEL. OVERLAP HALVES. USE TEMPORARY BOLTS FOR SECURING HALVES TOGETHER (USE APPROPRIATE FASTENERS).

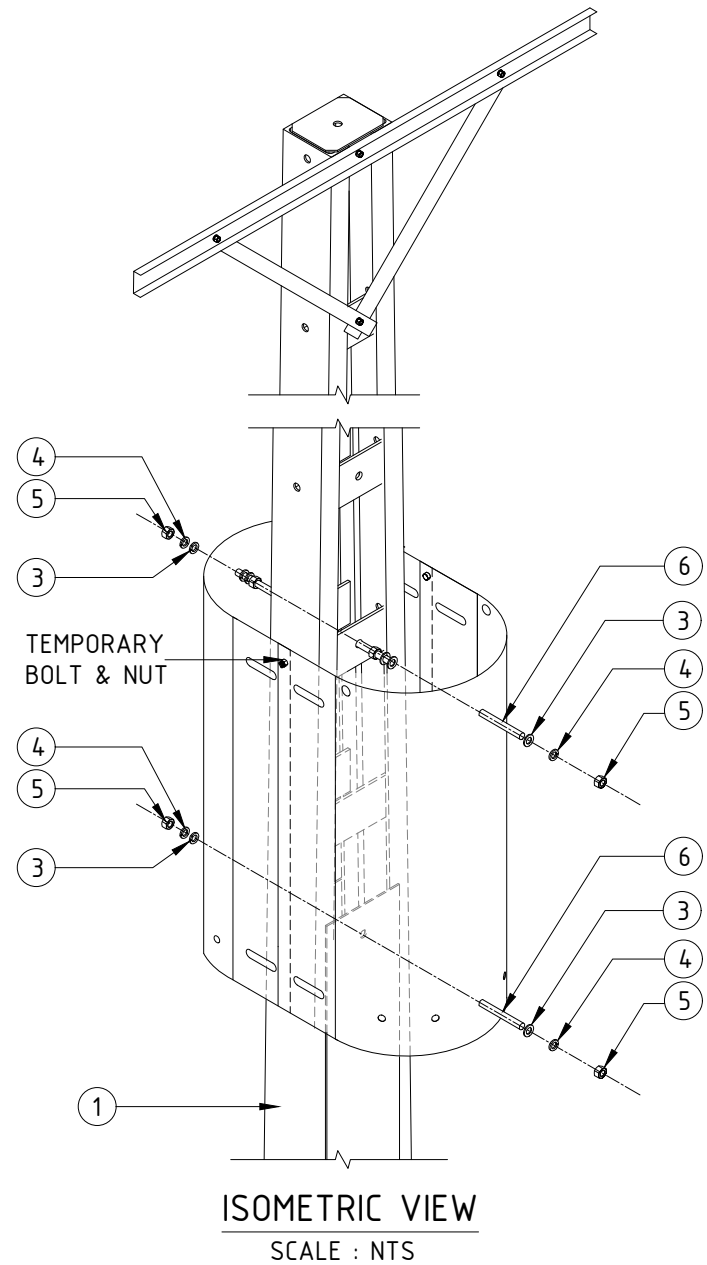


STEP -2 : USE OVERHEAD RIGGING WITH TWO SLINGS AND HOOKS TO LIFT TUBE HALVES INTO MOUNTING POSITION.

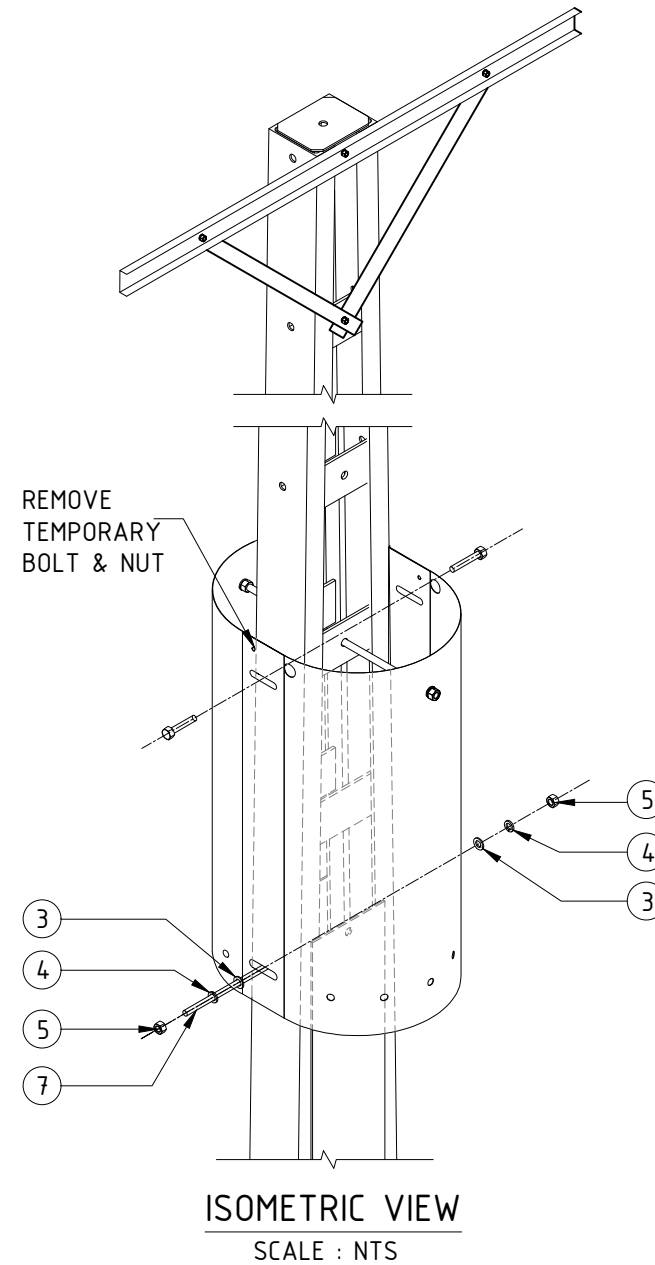
0	ISSUED FOR CONSTRUCTION.	J.R.	FEB'25	B.V.	B.C.
NO	DESCRIPTION	DRN	DATE	CKD	APPD
AMENDMENTS					



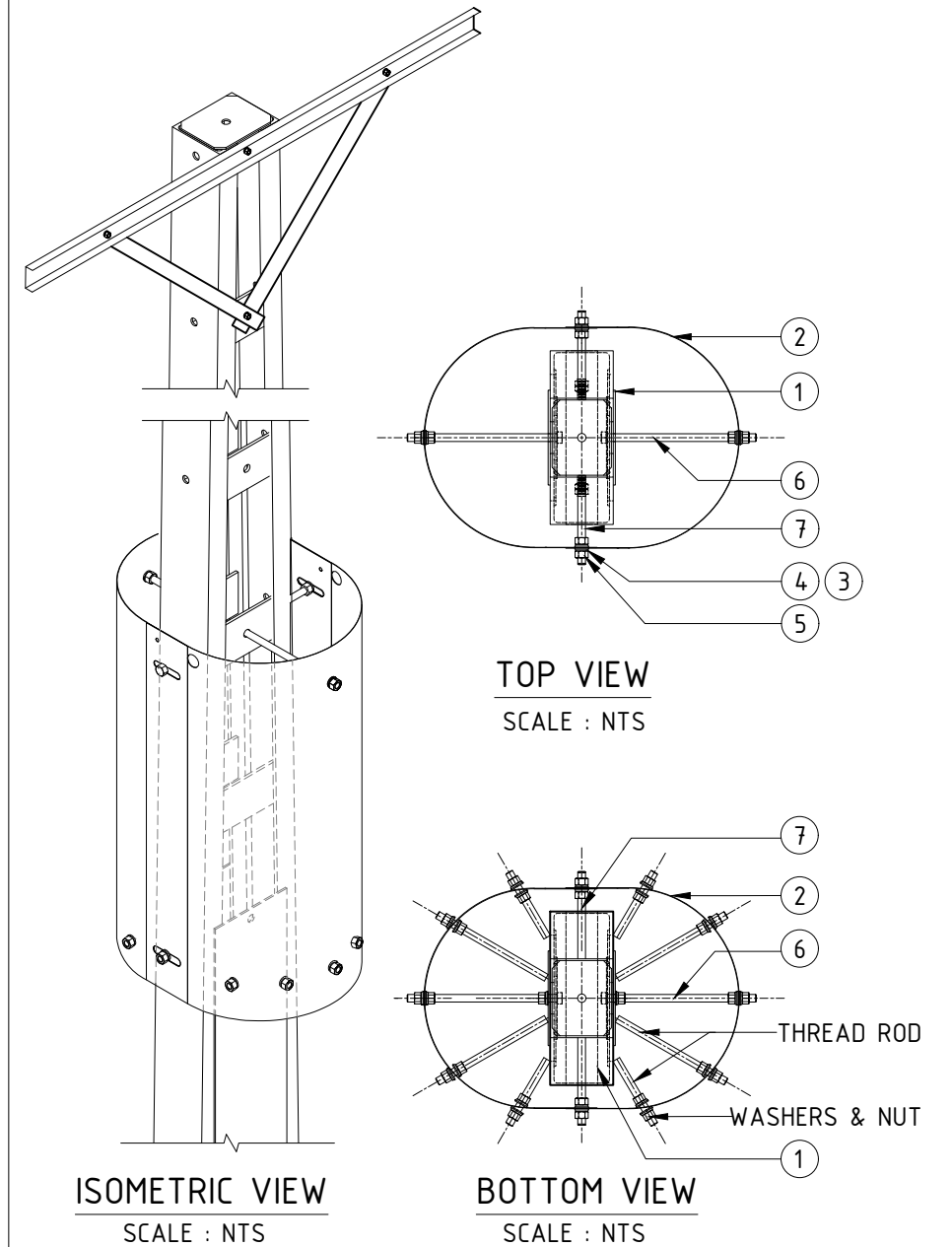
DES	POWER STANDARD DRAWING				
DRN	P.G.	ASSEMBLIES			
CKD	B.C.	TUBE ANTICLIMB DEVICE			
APPD	B.V.	ASSEMBLY SEQUENCE (SHEET 2 OF 3)			
SCALE	NTS	A3	DRAWING NUMBER	S01-02-01-77	
ISSUED	OCT'23	DRAWING NUMBER		S01-02-01-77	
ALL DIM. IN mm		DRAWING NUMBER		S01-02-01-77	
DRAFTING STANDARD TO A.S.1100			NE300/3718		AMDT



STEP -3 : INSERT TOP THREADED ROD ON ONE SIDE. WITHIN TUBE FIT ALL REQUIRED NUTS AND WASHERS FOR FASTENING. KEEP FEEDING ROD THROUGH POLE UNTIL IT PROTRUDES OUT THE OTHER SIDE. FIT INTERNAL NUTS AND WASHERS ON OTHER SIDE. REPEAT FOR BOTTOM FIXING



STEP -4 : FIT NUTS, WASHERS & BOLTS INTO SLOTTED HOLES AT TOP & BOTTOM. REMOVE TEMPORARY NUT & BOLT SLIDE TUBE HALVES INTO OPTICAL POSITION & TIGHTEN ALL FASTENERS TO PERMANENTLY SECURE TUBE TO POLE. CUT EXCESS ROD FLUSH WITH NUT & REMOVE ANY SHARP EDGES OR BURRS SLING CAN THEN REMOVED



STEP -5 : CUT THREADED ROD PIECES TO SIZE AND INSTALL IN BOTTOM OF TUBE WITH NUTS AND BOLTS TO FORM A GUARD WITHIN THE BOTTOM OF THE TUBE. ENSURE THREADED ROD END IS FLUSH WITH EXTERNAL NUT FACES. (CUT EXCESS ROD AS NEEDED & REMOVE BURRS AND SHARP EDGES)

0	ISSUED FOR CONSTRUCTION.	J.R.	FEB'25	B.V.	B.C.
NO	DESCRIPTION	DRN	DATE	CKD	APPD
AMENDMENTS					



DES	POWER STANDARD DRAWING				
DRN	P.G.	ASSEMBLIES			
CKD	B.C	TUBE ANTICLIMB DEVICE			
APPD	B.V	ASSEMBLY SEQUENCE (SHEET 3 OF 3)			
SCALE	NTS	A3	DRAWING NUMBER	S01-02-01-77	
ISSUED	OCT'23	DRAWING NUMBER		S01-02-01-77	
ALL DIM. IN mm		DRAWING NUMBER		S01-02-01-77	
DRAFTING STANDARD TO A.S.1100			NE300/3718		AMDT