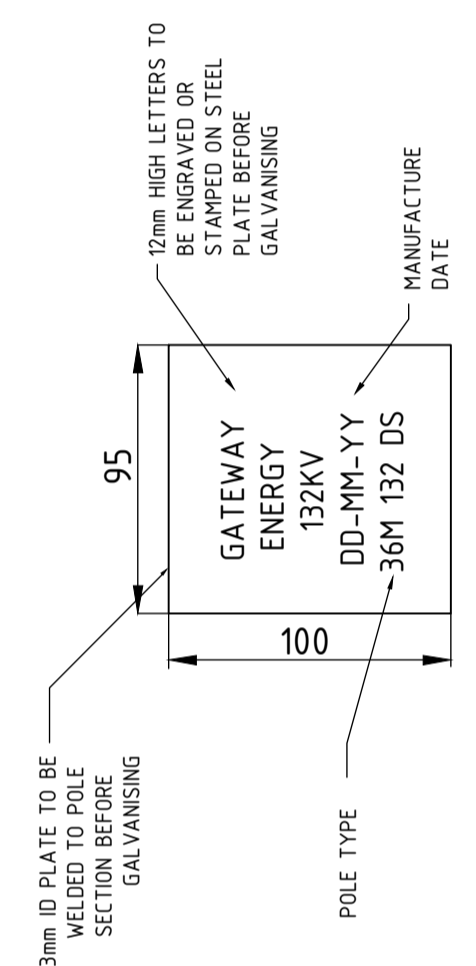
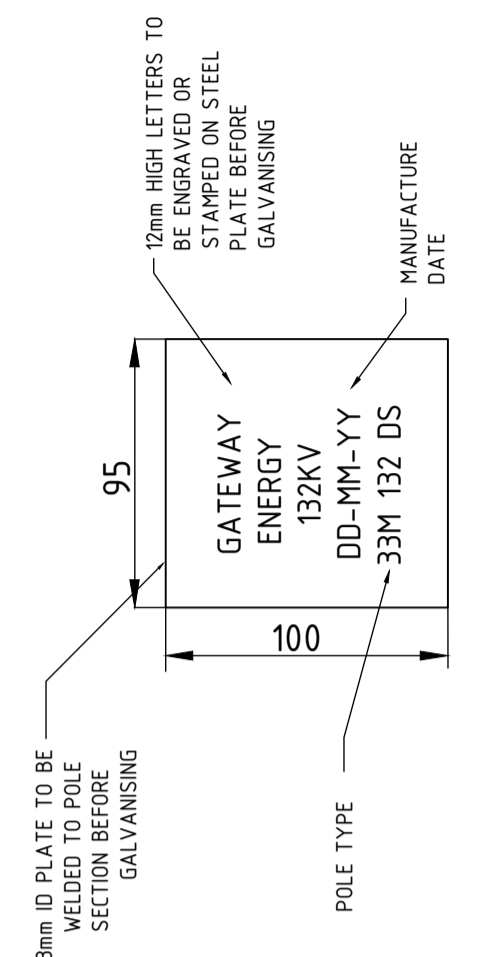
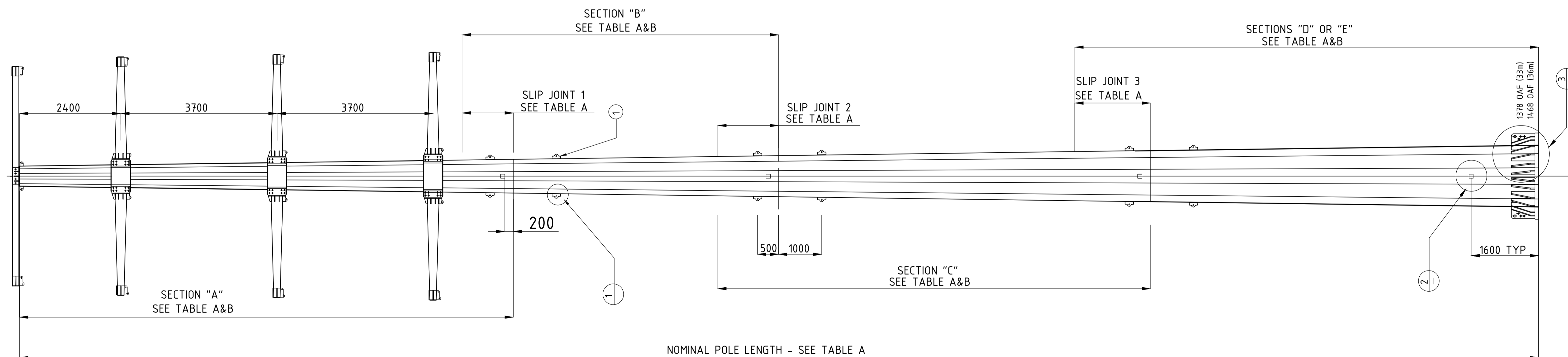


TABLE A - POLE SHAFT ASSEMBLY DETAILS

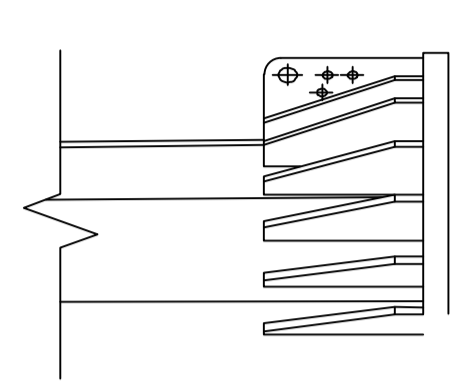
POLE NOM LENGTH (m)	NUMBER OF SECTIONS	SECTION DETAILS	SLIP JOIN 1 (mm)	SLIP JOIN 2 (mm)	SLIP JOIN 3 (mm)	POLE SHAFT & GAL MASS (kg)
33m	4	A + B + C + E	1210	1443	1789	13541
36m	4	A + B + C + D	1210	1443	1789	15279

TABLE B - POLE SECTION PROPERTIES

POLE SECTIONS	SECTION LENGTH (mm)	TOP DIA OAF (mm)	BOT DIA OAF (mm)	WALL THK (mm)	SECTION TAPER (mm/m)	STEEL GRADE (MPa)	MASS (kg)
A	11700	480	831	12	30	450	2325
B	7500	769	994	16	30	450	2673
C	10250	917	1225	16	30	450	4453
D	11000	1138	1468	16	30	450	5828
E	8000	1138	1378	16	30	450	4090



DETAIL 2 N.T.S.



ITEM 1 - JACKING LUG N.T.S.

DETAIL 3 N.T.S.

ITEM NO.	QTY	DESCRIPTION	COMMENTS	GRADE
1	12	110 x 200 x 20mm PLATE	JACKING LUG, WORKING LOAD LIMIT: 160KN	Q345B

NOTES:

1. ALL DIMENSIONS IN MILLIMETRES, UNLESS OTHERWISE STATED.
2. POLE DESIGNED IN ACCORDANCE WITH ASCE/SEI 48 - 11.
3. ALL POLE SECTIONS ARE G65 TO ASTM A572 WITH Fy = 450MPa.
4. CROSSARMS & JACKING LUGS ARE G50 TO ASTM A572 OR Q345B WITH Fy = 345MPa.
5. OTHER POLE ACCESSORIES ARE Q345B WITH Fy = 345MPa.
6. ALL POLE SECTIONS TO BE 12-SIDED.
7. POLE FINISH TO BE HOT DIPPED GALVANISED IN ACCORDANCE WITH AS/NZS 4680:2006 OR ASTM A123.
8. WELDING SHALL CONFORM TO THE AISC SPECIFICATION AND WELD PROCEDURE QUALIFICATIONS SHALL BE IN ACCORDANCE WITH AWS D1.1.
9. POLE MASS INCLUDES GALVANISING REFER TO TABLE A.
10. REFER TO TABLE B & C & D FOR POLE FITTING DETAILS.
11. REFER TO "132DS X-ARM" FOR CROSSARM DETAILS.

NO	DESCRIPTION	DRN	DATE	CKD	APPD	DRG NO	TITLE
0	INITIAL DRAFT	P.G	Jul'24				
AMENDMENTS							ASSOCIATED DRAWINGS



DES	EXAMPLE DRAWING 001
DRN	P.GUNA
CKD	
APPD	
SCALE	AS SHOWN
ISSUED	Jul'24
ALL DIM. Inm	
DRAFTING STANDARD TO A.S.1100	CAD PRODUCT - DO NOT AMEND MANUALLY

A1	DRAWING NUMBER	D2024/247350
----	----------------	--------------

NOTE: ✕ INDICATES SIGNATURES ON ORIGINAL ISSUE OF DRAWING OR LAST REVISION OF DRAWING