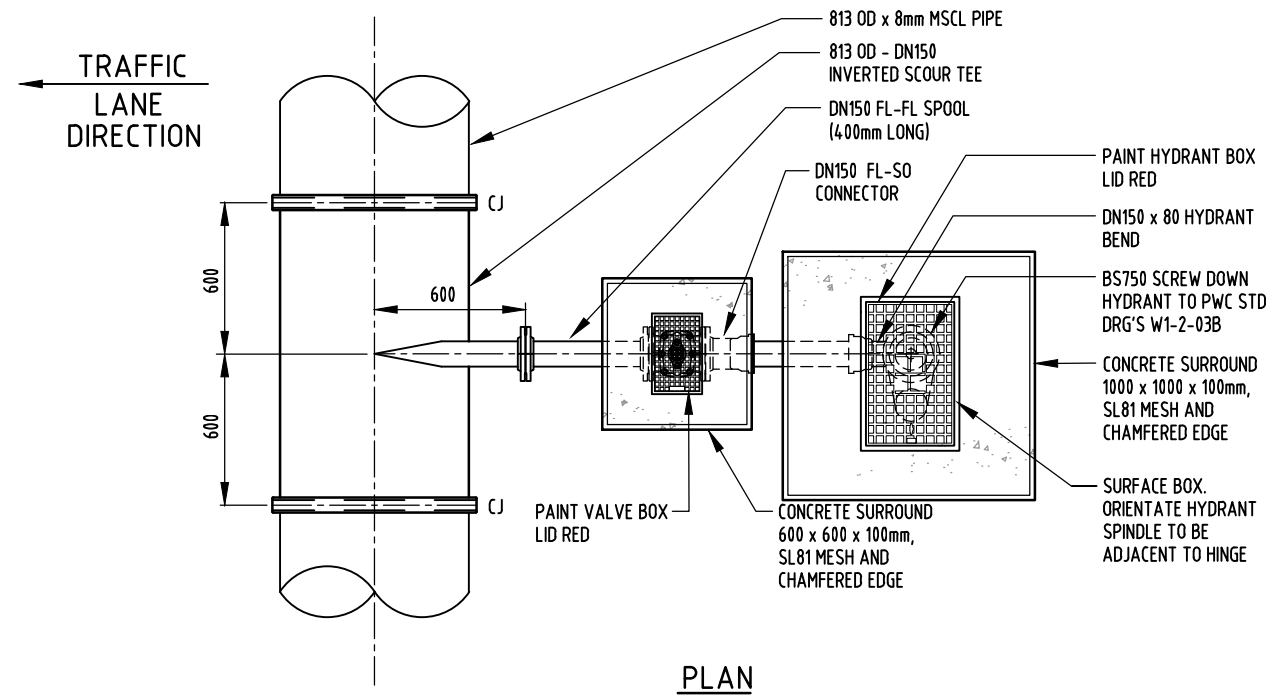


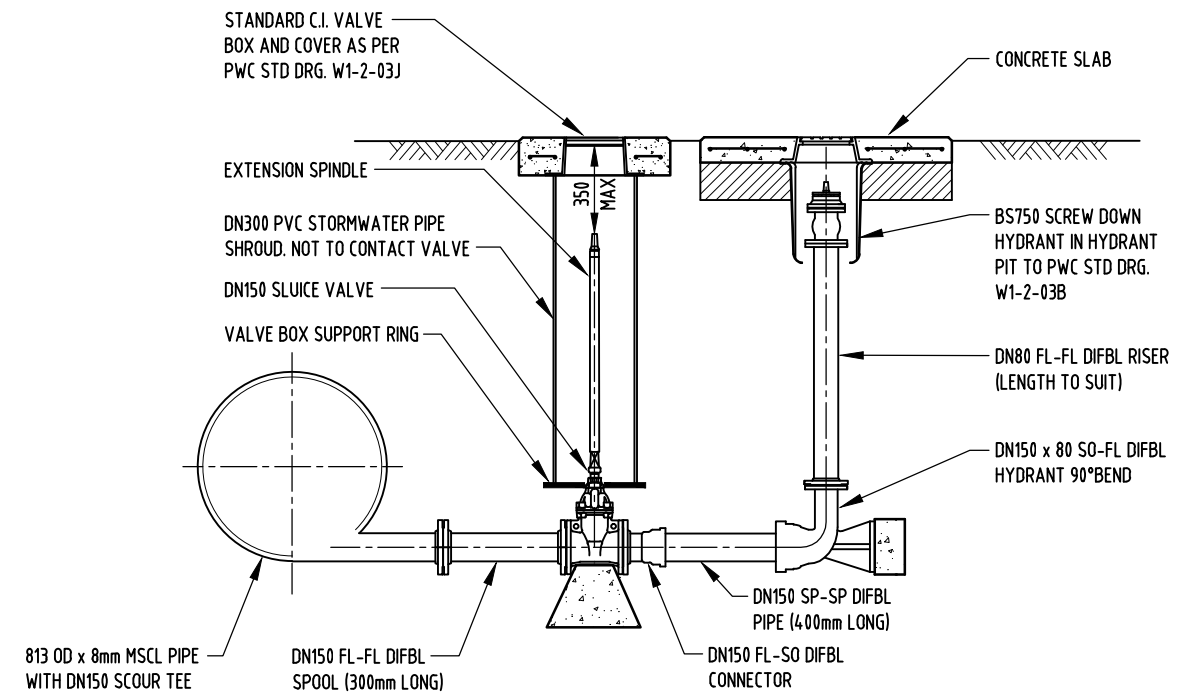
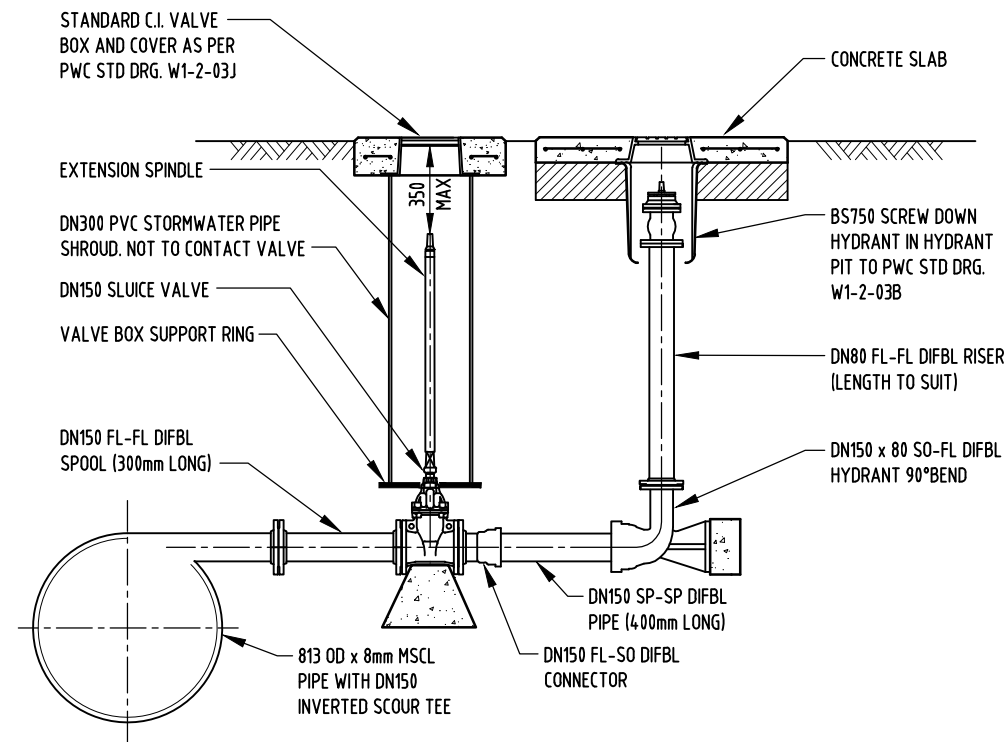
**FOR POTABLE WATER ONLY**

**THIS ASSEMBLY IS NOT TO BE USED FOR SEWERAGE INSTALLATIONS**



**NOTES**

1. INSTALL MARKER POST OR ENGRAVE KERB WITH 'ARH' FOR AIR RELEASE HYDRANT SIMILAR TO PWC STD DRG. W1-2-03D OR W1-2-03F.
2. INSTALL MARKER POST OR ENGRAVE KERB WITH 'SH' FOR SCOUR HYDRANT SIMILAR TO PWC STD DRG. W1-2-03D OR W1-2-03F.
3. FLANGE BOLTS AND NUTS TO BE TIGHTENED TO MANUFACTURERS RECOMMENDATIONS AND SEQUENCES USING A TORQUE WRENCH.
4. CONCRETE THRUST AND ANCHOR BLOCKS & GENERAL CONCRETING SHALL BE CLASS N25 IN ACCORDANCE WITH AS.1379 AND AS.3600.



**AIR RELEASE HYDRANT - ELEVATION**

**SCOUR HYDRANT - ELEVATION**

1	NEW DRAWING AND GENERAL AMENDMENTS 2021	PW	DEC'21	JR	DC
NO	DESCRIPTION	DRN	DATE	CKD	APPD
AMENDMENTS					



DES	RJ	WATER STANDARD DRAWING		
DRN	RGI	MAINLAYING		
CHK	RJ	AIR RELEASE HYDRANT & SCOUR HYDRANT SECTIONS		
APPD	JP			
SCALE	N.T.S.			
ISSUED	AUG'08	A3	DRAWING NUMBER	W1-2-13C
ALL DIM. IN mm				1
DRAFTING STANDARD TO A.S.1100		CAD PRODUCT - DO NOT AMEND MANUALLY		
				AMDT