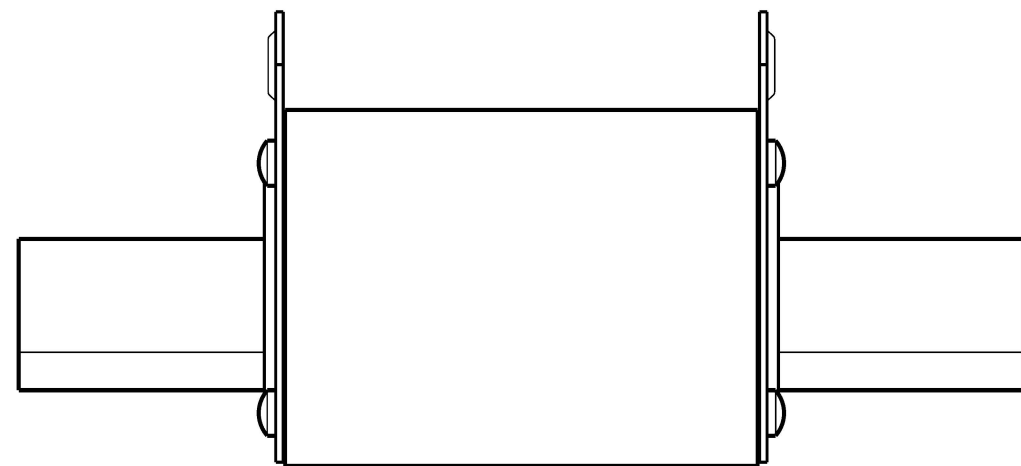


PLAN



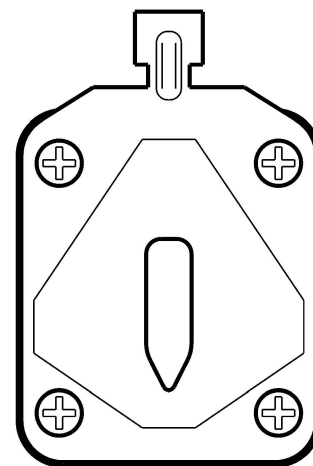
ELEVATION

STRIPLE FUSES			
ITEM	FUSE ITEM NUMBER	CURRENT RATING	SIZE
11	286211	63A	00
12	286229	80A	
13	286237	100A	
14	286245	125A	
15	205088	160A	
16	157974	35A	1
1	10058	63A	
2	10066	100A	
17	158162	125A	
3	11064	160A	
4	9712	200A	2
5	11072	250A	
6	9761	315A	
7	9720	355A	3
8	9738	400A	
9	9746	500A	
10	9753	630A	

STRIPLE SOLID LINKS			
ITEM	LINK ITEM NUMBER	CURRENT RATING	SIZE
18	205070	160A	00
19	258210	250A	1
20	502716	1250A	3

SWITCH-FUSE DISCONNECTORS			
ITEM	ITEM NUMBER	CURRENT RATING	SIZE
21	407050	160A	00
22	255943	400A	1
23	11866	630A	3
24	292276	1000A	3

GENERATOR DISCONNECTORS			
ITEM	ITEM NUMBER	CURRENT RATING	SIZE
25	406808	1000A	3
26	406811	2000A	3



END ELEVATION

DIN 43-620 FUSE EXAMPLE

NOTES:

- NOMINAL VOLTAGE 500V AC.
- FUSE RATED SHORT CIRCUIT BREAKING CAPACITY 120 kA (IEC 60947-2)
- FUSE SPEED TO BE 'FAST ACTING'
- FUSE UTILISATION CATEGORY TO BE gG
- SIZES TO BE IN ACCORDANCE WITH DIN 43-620
- INSULATED EXTRACTION TAGS ARE NOT ACCEPTABLE
- REFER TO POWER AND WATER STANDARD DRAWINGS S02-01-04-08, S02-01-04-11, S02-01-04-17 & S04-01-03-05 FOR SWITCH-FUSE ASSEMBLIES.
- SIZE 2 FUSES MAY BE USED IN SIZE 3 ASSEMBLIES.

15	ITEM 12: CORRECTED ITEM NUMBER.	P. BH.	JUL '23	B. V.	B. C.
14	ADDED TABLES FOR SOLID LINKS, SWITCH-FUSE & GENERATOR DISCONNECTORS	A. N.	MAR '21	C. C. C.	B. V.
	ADDED SOLID LINKS TO TITLE. EXPANDED NOTE 7 & ADDED NOTE 8.				
13	TITLEBLOCK & DRAWING NUMBER FORMATTED	K. T.	FEB '19	C. C.	C. C.
12	SIZE 00 STOCK CODES ADDED	A. T.	APR '12	B. C.	S. C.
11	TABLE AND TECHNICAL DATA AMENDED	A. S.	DEC '04	R. C.	C. C.
10	JEAN MULLER ITEM ADDED, TITLE CHANGED.	RG1	APR '01	MB	FRR
9	TECHNICAL DATA ADDED.	-	- ' --	-	MCA
NO	DESCRIPTION	DRN	DATE	CKD	APPD
AMENDMENTS					



DES	K. CHITT	POWER STANDARD DRAWING		
DRN	B. TOLSON	FUSES AND SWITCHGEAR CARTRIDGE STRIPLE FUSE LINKS & SOLID LINKS		
CKD	R. HAIGH			
APPD	K. CHITT			
SCALE	N. T. S.			
ISSUED	NOV '82	A3	DRAWING NUMBER	S02-01-04-10
ALL DIM.	IN mm			
DRAFTING STANDARD TO A.S.1100		CAD PRODUCT - DO NOT AMEND MANUALLY		

