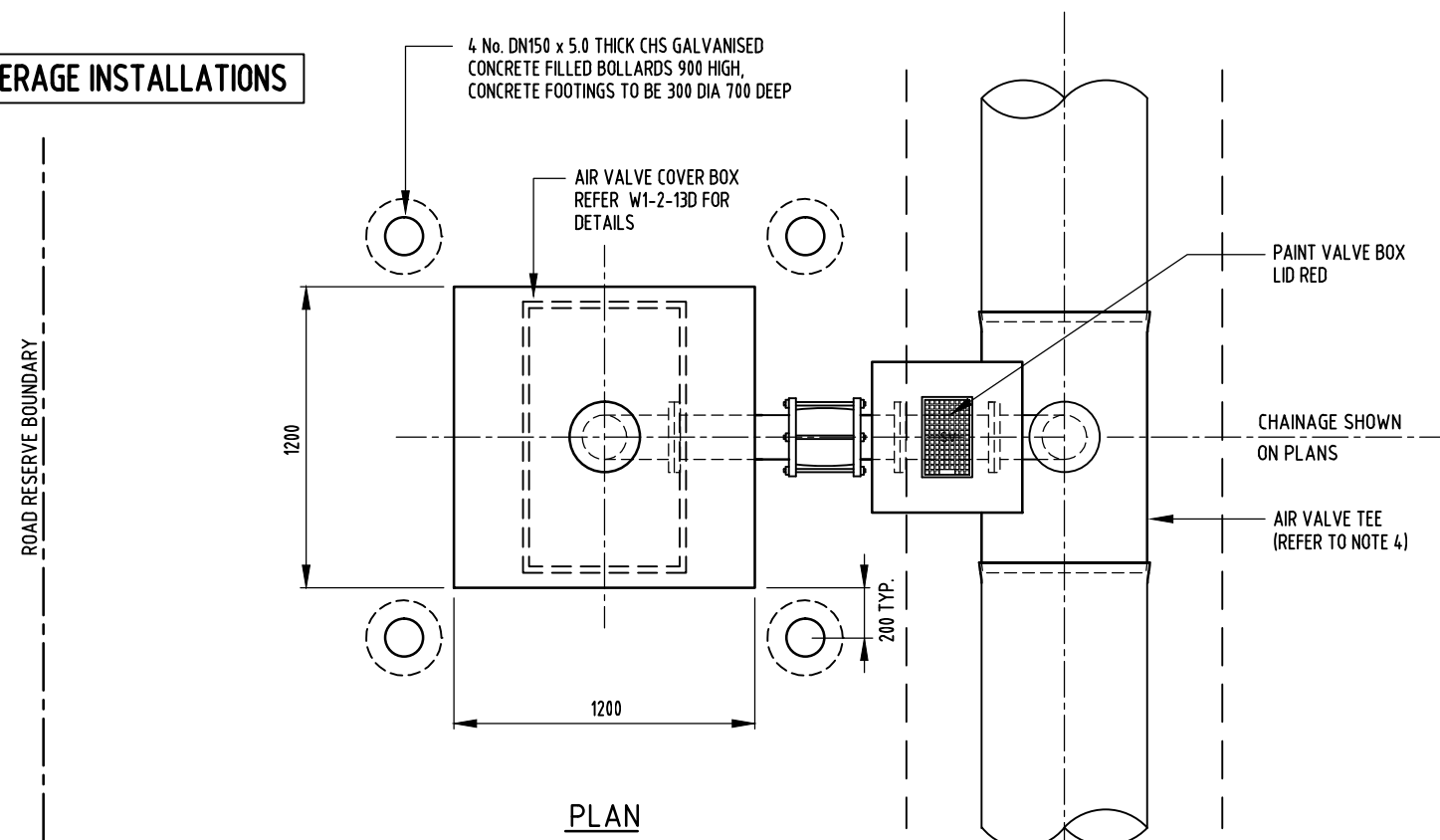


FOR POTABLE WATER ONLY

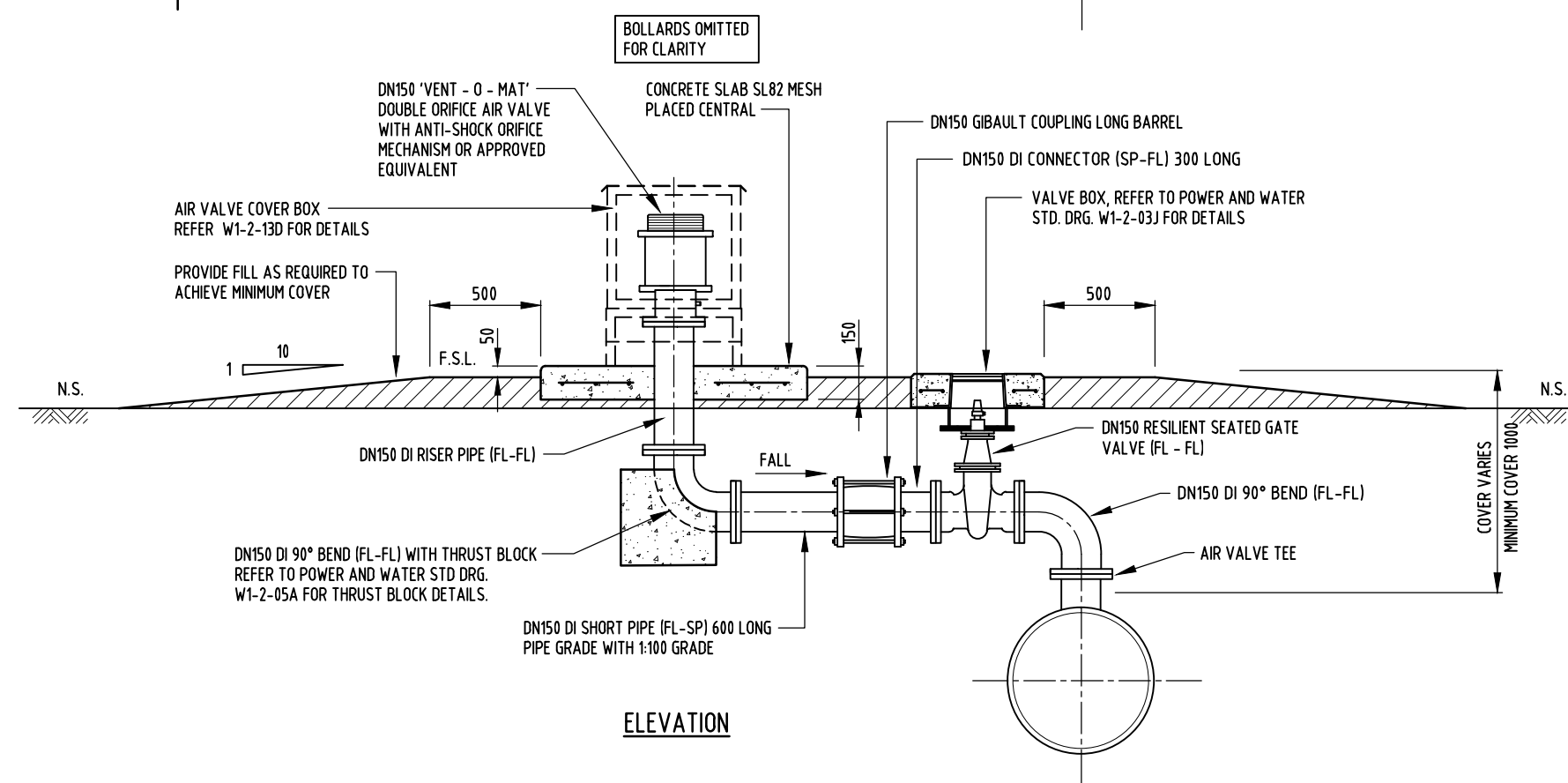
THIS ASSEMBLY IS NOT TO BE USED FOR SEWERAGE INSTALLATIONS



PLAN

NOTES

1. THIS DETAIL IS NOT PERMITTED FOR USE ON MAINS LARGER THAN DN225.
2. AIR VALVE/STEM MATERIAL: 304 OR 316 STAINLESS STEEL.
3. USE INSULATED FLANGE KIT INCLUDING INSULATED BOLTS.
4. FOR DICL MAINS, USE OF A SO-SP-FL TEE IS PERMITTED.
5. ACID PICKLE OR PASSIVATE STAINLESS STEEL AFTER WELDING AND/OR THREADING. USE SILVER BRAZING ALLOY (MIN 38% SILVER TO AS 1167.1) FOR ALL CAPILLARY JOINTS OF STAINLESS STEEL PIPES AND FITTINGS. USE FILLER RODS OF LOW CARBON STAINLESS STEEL NOT GREATER THAN 2mm IN DIAMETER AND COMPLYING WITH AS 1167.2.
6. PLACE 300mm PVC PIPE SHROUD OVER VALVE SPINDLE BEFORE BACKFILLING.
7. CONCRETE FOR THRUST AND ANCHOR BLOCKS & GENERAL CONCRETING SHALL BE CLASS N25 IN ACCORDANCE WITH AS.1379 AND AS.3600.



ELEVATION

| | | | | | |
|----|--|-----|--------|-----|------|
| 1 | NEW DRAWING AND GENERAL AMENDMENTS 2021. | PW | DEC'21 | JR | DC |
| NO | DESCRIPTION | DRN | DATE | CKD | APPD |
| | AMENDMENTS | | | | |



| | | | | | |
|-------------------------------|--------|-------------------------------------|----------------|----------|---|
| DES | RJ | WATER STANDARD DRAWING | | | |
| DRN | RGI | MAINLAYING | | | |
| CHK | RJ | STANDARD DN150 | | | |
| APPD | JP | AIR VALVE ASSEMBLY (SINGLE TEE) | | | |
| SCALE | N.T.S. | A3 | DRAWING NUMBER | W1-2-13B | 1 |
| ISSUED | AUG'08 | | | | |
| ALL DIM. IN mm | | | | | |
| DRAFTING STANDARD TO A.S.1100 | | CAD PRODUCT - DO NOT AMEND MANUALLY | | | |
| | | | | AMDT | |