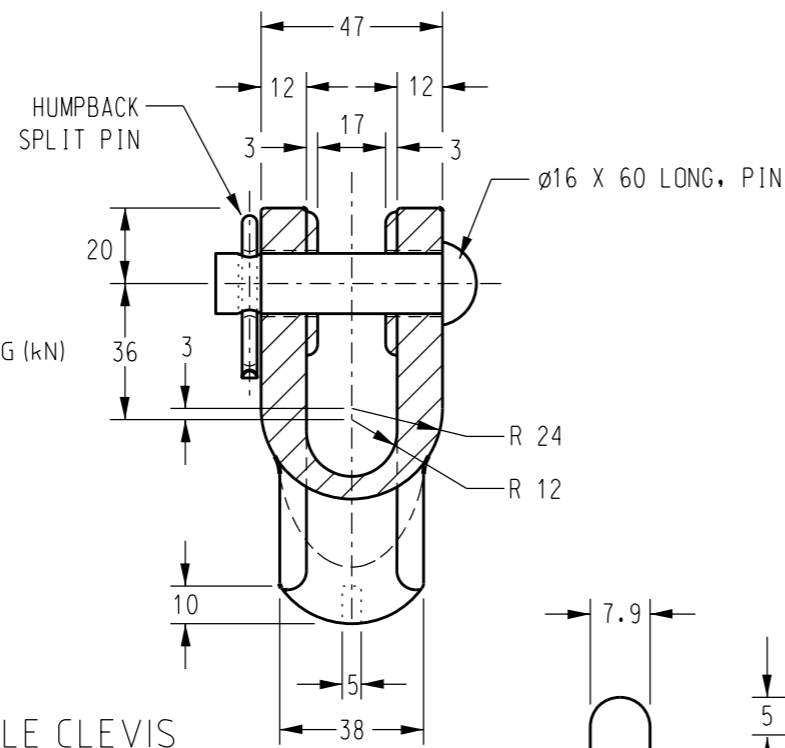


ITEM 1: THIMBLE CLEVIS

C/W PIN AND HUMPBACK SPLIT PIN
 MATERIAL: BODY - CAST ALUMINIUM ALLOY
 PIN - FORGED STEEL, GALVANISED.
 SPLIT PIN - HUMPBACK TYPE, REF. HP/A.
 REF. DWG: S01-01-04-02, ITEM 2
 MIN. FAILING LOAD 70 kN
 ITEM NUMBER: 6767



ITEM 2: SOCKET TONGUE

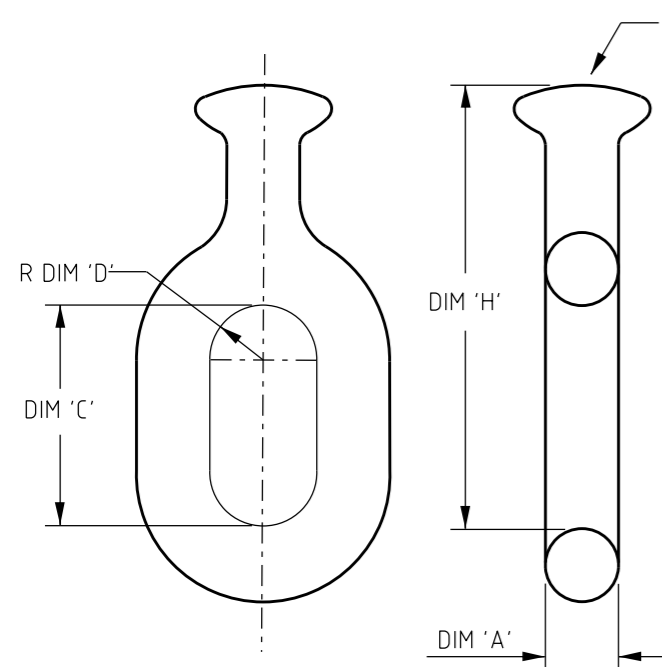
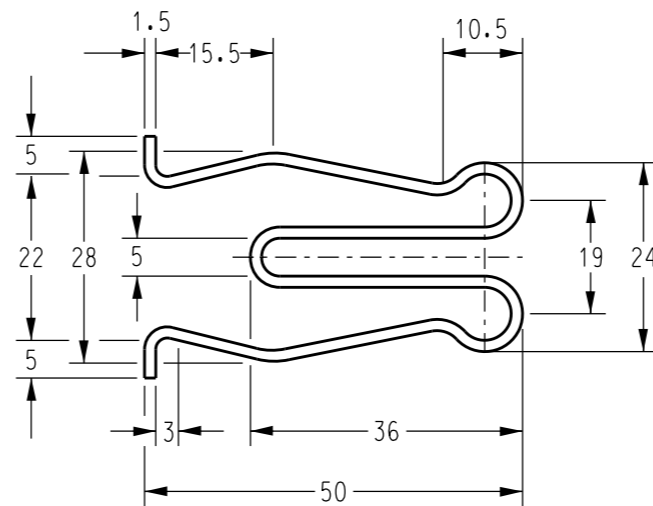
MATERIAL - MALLEABLE CAST IRON OR FORGED STEEL
 NOTE: EACH SOCKET ENDED FITTING IS TO BE SUPPLIED WITH 'W' SECURITY CLIP INSERTED INTO SOCKET.

NOTES:

1. ALL FITTINGS ARE TO COMPLY WITH AS 1154.1 - 2009
2. COATING, ALL FERROUS METALS TO BE HOT DIPPED GALVANISED. MIN GALVANISING TO BE 450g/m².
3. MARKING, ALL INSULATOR SET FITTINGS SHALL BE MARKED PERMANENTLY WITH IDENTIFICATION REFERENCE SHOWN ON THE RELEVANT DRAWING, PRIOR TO GALVANISING, IN SUCH A WAY THAT IT WILL REMAIN LEGIBLE AFTER GALVANISING. MARKING IS TO BE DONE TO THE REQUIREMENTS OF AS 1154.1 AND MUST INCLUDE THE MAXIMUM STRENGTH RATING.

ITEM 3: 'W' SECURITY CLIP

FOR 16mm SOCKET. REF 16.
 MATERIAL - 5% PHOSPHOR BRONZE OR STAINLESS STEEL
 TENSILE STRENGTH - 494 Pa
 EXAMPLE FOR ITEM 2.



ITEM 4: BALL EYE

MATERIAL - FORGED STEEL, GALVANIZED

TABLE 1: FITTING ATTRIBUTES

ITEM REF.	ITEM NUMBER	STRENGTH RATING	NOMINAL DIMENSIONS					AS 1154.1 REF.
			A	B	C	D	H	
2	3087	70kN	16	16	28	22	18	70ST
	503918	160kN	20	20	35	24	22	160ST
	503931	210kN	-	20	35	-	22	-
4	503945	120kN	16	16	50	13	100	120BE
	240598	160kN	20	20	64	16	128	160BE

NO	DESCRIPTION	DRN	DATE	CKD	APPD
10	EDITED TEXT FORMATTING, ADDED SOCKET TONGUE TABLE & 160-210kN ITEMS ITEM 4. UPDATED STANDARDS REFERENCE & MARKING REQUIREMENTS, ADDED SPLIT PIN REFERENCE DRAWING.	A.N.	AUG'21	C.C.C.	B.V.
9	TITLEBLOCK & DRAWING NUMBER FORMATTED	K.T.	DEC'18	C.C.	C.C.
8	TITLE CHANGED	R.G.I.	NOV'99	G.H.	F.R.R.
7	MIN FAILING LOAD ITEM 1 INCREASED, REDRAWN ON MICROSTATION.	R.G.I.	JAN'97	A.B.	F.R.R.
6	ITEM 2 AMMENDED.	-	JUN'91	-	M.G.SH
5	TITLE AND NUMBER CHANGED.	-	JUL'87	-	-



DES	J.HASSANEN	POWER STANDARD DRAWING	
DRN	R.HAIGH	LINE HARDWARE INSULATOR FITTINGS SUSPENSION WITH DISCS	
CKD	E.HENDERSON		
APPD	F.EVA		
SCALE	N.T.S	A3	DRAWING NUMBER S01-01-04-03
ISSUED	26/06/79		
ALL DIM.	IN mm	DRAFTING STANDARD TO A.S.1100	
CAD PRODUCT - DO NOT AMEND MANUALLY		AMDT	