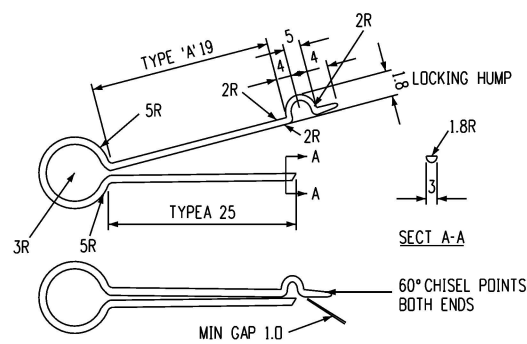
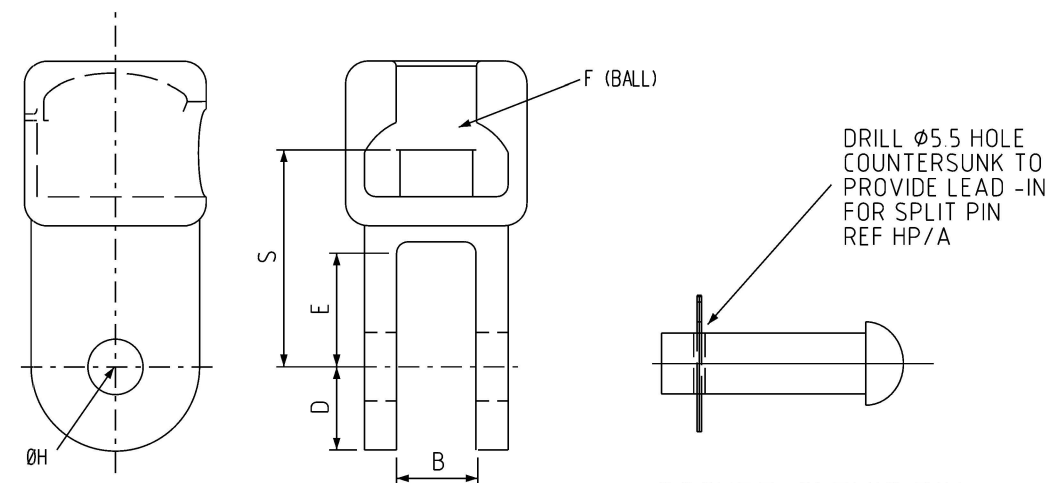


ITEM 1: BALL HOOK-LONG SHANK - 70kN
 REF 70BHL AS 1154.1
 MATERIAL - FORGED STEEL - 500 MPa
 ITEM NUMBER 415320

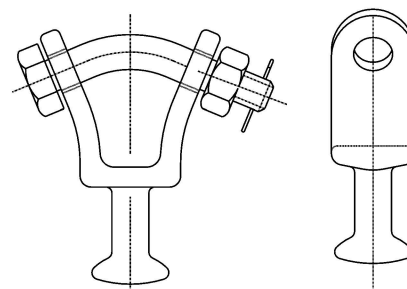


ITEM 2: HUMPBACK SPLIT PIN REF HP/A
 MATERIAL - STAINLESS STEEL
 COLD ROLLED & COLD FORMED
 NOTE - SUITABLE FOR PINS OR BOLTS
 Ø16 TO Ø20
 ITEM NUMBER 3160

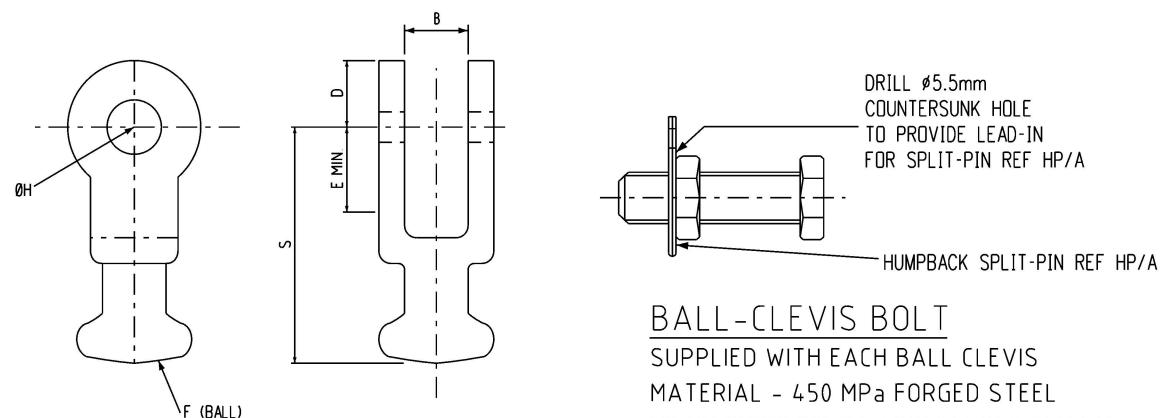


ITEM 3: SOCKET CLEVIS
 (TO BE SUPPLIED WITH PIN REF 16/P)
 MATERIAL - MALLEABLE CAST IRON
 NOTE - EACH SOCKET - ENDED
 FITTINGS IS TO BE SUPPLIED
 WITH SECURITY CLIP TO SUIT
 (SEE DRG S01-01-04-03)
 INSERTED IN THE SOCKET

SOCKET-CLEVIS PIN
 SUPPLIED WITH EACH SOCKET-CLEVIS
 PIN SUPPLIED WITH HUMPBACK
 SPLIT PIN REF HP/A
 MATERIAL - FORGED STEEL



ITEM 5: BALL- 'Y' CLEVIS
 CONNECTOR, 160kN, BALL 20MM,
 Y CLEVIS 20mm PIN, GALV STEEL



ITEM 4: BALL-CLEVIS
 TO BE SUPPLIED WITH BOLT
 MATERIAL - FORGED STEEL

BALL-CLEVIS BOLT
 SUPPLIED WITH EACH BALL CLEVIS
 MATERIAL - 450 MPa FORGED STEEL
 TO BE SUPPLIED C/W SPLIT PIN REF HP/A

NOTES:

1. ALL FITTINGS TO COMPLY WITH AS 1154.1 AS PER TABLE AND ITEM DESCRIPTION.
2. REFER TO STSP 01-018 FOR MORE INFORMATION.

TABLE 1: FITTING ATTRIBUTES

ITEM REF.	ITEM NUMBER	TYPE	STRENGTH RATING	NOMINAL DIMENSIONS							AS 1154.1 REF.
				B	D	E	F	H	S	BOLT/PIN DIA.	
3	12120	SOCKET - CLEVIS	70kN	20	22	28	16	18	59	16	70SC
	235275	SOCKET - CLEVIS	160kN	24	24	35	20	22	62	20	160SC
4	3137	BALL - CLEVIS	70kN	20	22	28	16	18	78	16	70BC
	283945	BALL - CLEVIS	160kN	24	24	35	20	22	95	20	160BC
5	504084	BALL - 'Y' CLEVIS	160kN	67	24	40	24	22	85	24	-

NO	DESCRIPTION	DRN	DATE	CKD	APPD
9	ADDED ITEM 5. AMENDED TABLE ACCORDINGLY.	J.R.	AUG'24	B.B.	B.V.
8	UPDATED ITEM 1, 3 & 4 DETAILS, TITLE, FORMATTING, STANDARDS & CHANGED 'STOCK CODE' TO 'ITEM NUMBER'. ADDED TABLE AND NOTES 2 & 3	A.N.	AUG'21	A.N.	B.V.
7	TITLEBLOCK & DRAWING NUMBER FORMATTED	K.T.	DEC'18	C.C.	C.C.
6	REDRAWN IN CAD	C.C.	NOV'10	A.T.	S.C.



DES	A. TALYOR	POWER STANDARD DRAWING	
DRN	C. COPPINS	LINE HARDWARE INSULATOR FITTINGS SUSPENSION	
CKD	A. TALYOR		
APPD	A. TALYOR	A3	DRAWING NUMBER S01-01-04-02
SCALE	N.T.S.		
ISSUED	NOV'10	DRAFTING STANDARD TO A.S.1100	
ALL DIM. IN mm			
CAD PRODUCT - DO NOT AMEND MANUALLY		AMDT	