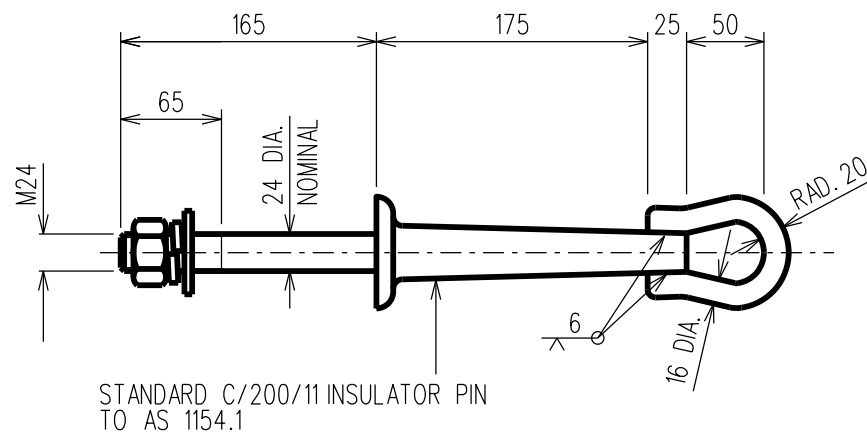
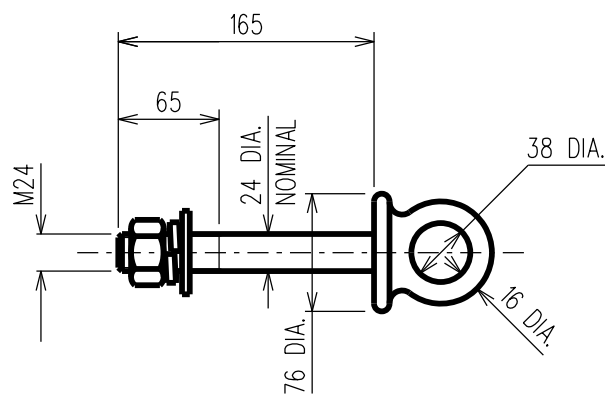


ITEM 1: EXTENSION EYE BOLT
C/W GALVANISED M24 SPLIT WASHER, FLAT WASHER & NUT
ITEM NUMBER: 400811



ITEM 2: EXTENSION EYE BOLT
C/W GALVANISED M24 SPLIT WASHER, FLAT WASHER & NUT
ITEM NUMBER: 16121



ITEM 3: EYE BOLT - FORGED
C/W GALVANISED M24 SPLIT WASHER, FLAT WASHER & NUT
ITEM NUMBER: 16139

NOTES:

DIMENSIONS:

UNLESS OTHERWISE SPECIFIED, DIMENSIONS ARE TO BE IN ACCORDANCE WITH THE FOLLOWING STANDARDS:

- a. AS 1111.1 ISO METRIC HEXAGON BOLTS AND SCREWS - PRODUCT GRADE C, PART 1: BOLTS
- b. AS 1112.3 ISO METRIC HEXAGON NUTS, PART 3: PRODUCT GRADE C.
- c. AS 1237.1 PLAIN WASHERS FOR METRIC BOLTS, SCREWS AND NUTS FOR GENERAL PURPOSES - GENERAL PLAN

EACH EYE BOLT IS TO BE SUPPLIED COMPLETE WITH A NUT, SPRING WASHER AND A LARGE FLAT WASHER OF PRODUCT GRADE C.

MATERIALS:

- a. BOLTS - STEEL CLASS 4.6 TO A.S. 1111.1
- b. NUTS - STEEL CLASS 5 TO A.S. 1112.3
- c. WASHERS - MILD STEEL
- d. EYE BOLTS TO BE FORGED FROM HOT ROLLED CARBON STEEL TO A.S. 1442/CS1030 GRADE OR EQUIVALENT. THREAD FORM ISOMETRIC COARSE PITCH SERIES 8g TO A.S. 1275

GALVANISING:

BOLTS, NUTS, EYE BOLTS AND WASHERS TO BE HOT DIP GALVANISED. THE MASS AND QUALITY OF THE COATING AND THREAD TOLERANCES TO BE IN ACCORDANCE WITH A.S. 1214



MINIMUM FAILING LOADS:

- a. THE MINIMUM TENSILE FAILING LOAD OF BOLTS, EYE BOLTS TO BE 141kN
- b. THE MINIMUM PROOF FAILING LOAD OF NUTS TO BE 177kN
- c. THE MINIMUM CANTILEVER FAILING LOAD OF EYE BOLTS TO BE:
 - ITEM NUMBER 16139 = 18kN
 - ITEM NUMBER 16121 = 11kN
 - ITEM NUMBER 400811 = 7kN

TOLERANCE:

UNLESS SPECIFIED OTHERWISE, TOLERANCES SHALL BE AS FOLLOWS:

- a. DIMENSIONS UP TO AND INCLUDING 40.0mm = +/- 1mm
- b. DIMENSIONS IN EXCESS OF 40.0mm = +/- 3%

2 CHANGED 'STOCK CODE' TO 'ITEM NUMBER'. UPDATED AS REFERENCES. REMOVED REFERENCE TO NON-M24 THREADS. REFORMATTED TEXT. 1 TITLEBLOCK & DRAWING NUMBER FORMATTED 0 ISSUED FOR CONSTRUCTION. REPLACES DWG. No. S01-01-04-15	A.N.	JUL'21	C.C.C.	B.V.	 NORTHERN TERRITORY	DES	M. BOCK	POWER STANDARD DRAWING				
	K.T.	DEC'18	C.C.	C.C.		DRN	A. SCHMID	LINE HARDWARE/BOLTED CONNECTIONS SUSPENSION CONSTRUCTION - EYEBOLTS FOR UNIVERSAL POLE CONSTRUCTION				
NO	DESCRIPTION	DRN	DATE	CKD	APPD	CKD	M. BOCK					
AMENDMENTS						APPD	C. PEMBERTON	SCALE	1:5			
						ISSUED	SEPT'02	ALL DIM. IN mm	A3	DRAWING NUMBER	S01-01-04-45	
						DRAFTING STANDARD TO A.S. 1100	CAD PRODUCT - DO NOT AMEND MANUALLY					