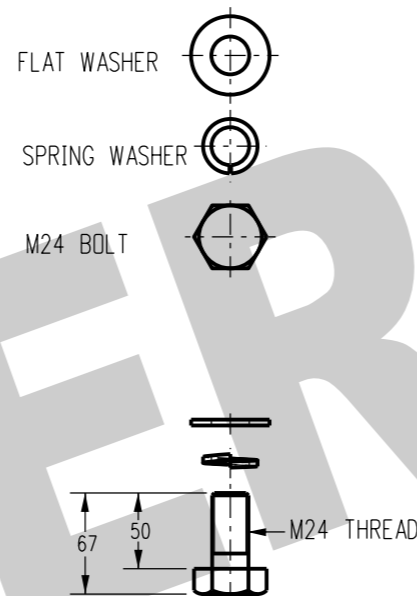


**VERTICAL LINE POST INSULATOR**

SCALE 1:5



**M24 x 50 BOLT,  
cw SPRING AND  
FLAT WASHERS**

(MATERIAL - STRUCTURAL STEEL,  
HOT DIPPED GALVANISED)

**BRIEF SPECIFICATION**

**MATERIALS:**

INSULATOR - NON-POROUS GLAZED PORCELAIN; TOLERANCES TO AS 2947  
 MIN FAILING LOAD - CANTILEVER 11 kN  
 - AXIAL 5.5 kN

BASE - MALLEABLE CAST IRON, HOT DIP GALVANISED MIN 460g/m2  
 ZINC COATING TO AS 1650.

IMPULSE WITHSTAND VOLTAGE 150 kV

POWER FREQUENCY WET WITHSTAND VOLTAGE 140 kV

POWER FREQUENCY FLASHOVER - DRY REFER NOTE  
 - WET REFER NOTE

DRY ARCING DISTANCE 364 mm

GROSS MASS OF INSULATOR 18 kg

NOTE: POWER FREQUENCY FLASHOVER WET AND DRY TO BE STATED BY THE  
 MANUFACTURER/SUPPLIER.

**NOTES:**

1. ALL INSULATORS ARE TO BE MOUNTED WITH THE APPROPRIATE 24mm BOLT  
 TO FIT TYPE OF CROSSARM. BOLT TO BE INSTALLED WITH 24mm SPRING  
 WASHER AND GALVANISED FLAT WASHER.

2. NON PREFERED ITEM. REFER TO S01-01-03-10 FOR PREFERED ITEM.

3	CHANGED TITLE. SUPERSEDED TO S01-01-03-10.	A.N.	AUG'21	A.N.	B.V.
2	TITLEBLOCK & DRAWING NUMBERS FORMATTED	K.T.	MAR'19	C.C.	C.C.
1	NOTE 2 ADDED	C.C.	SEP'11	A.T.	S.C.
NO	DESCRIPTION	DRN	DATE	CKD	APPD
AMENDMENTS					



NORTHERN TERRITORY

DES	S. LEACH	POWER STANDARD DRAWING		
DRN	R. INNES	INSULATORS - PORCELAIN LINE POST 22KV COMPLETE		
CKD	G. HAWTHORNE			
APPD	F. ROBSON			
SCALE	AS SHOWN			
ISSUED	JAN 2000	A3	DRAWING NUMBER	S01-01-03-07
ALL DIM.	IN mm			
DRAFTING STANDARD TO A.S.1100		CAD PRODUCT - DO NOT AMEND MANUALLY		3 AMDT