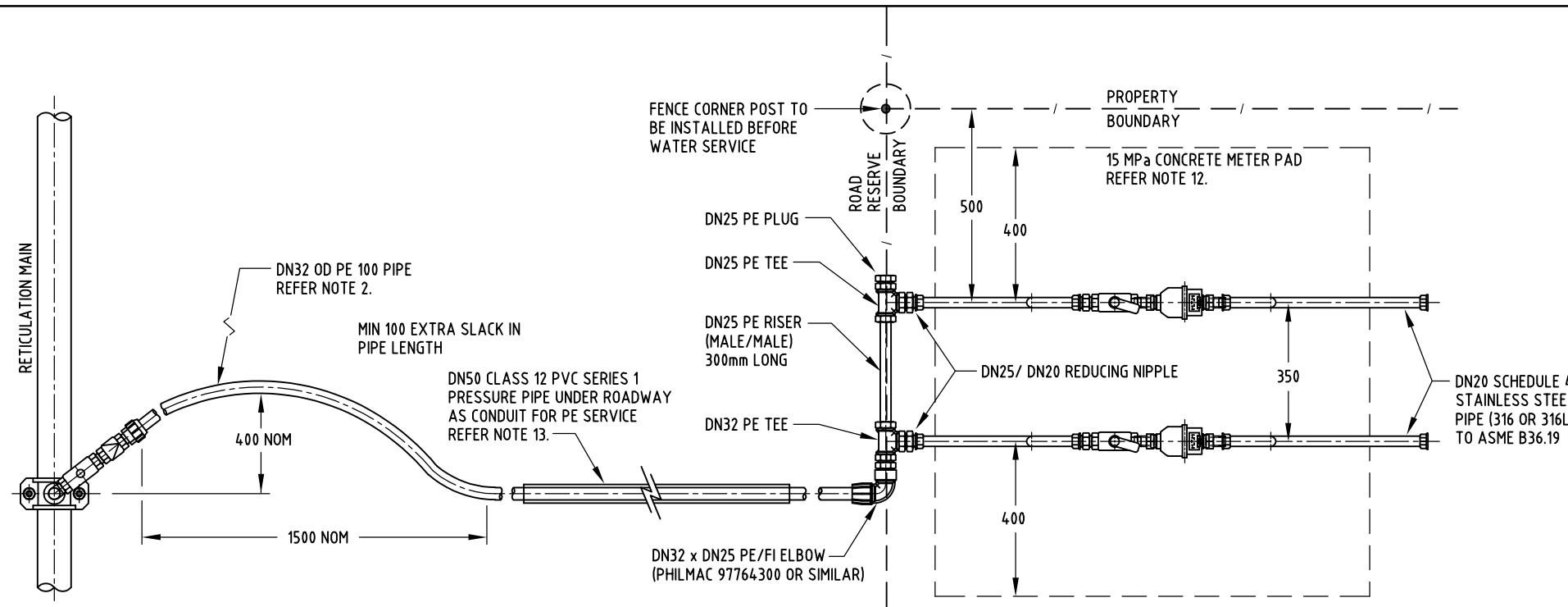


NOTES:

- ALL DIMENSIONS IN MILLIMETRES UNLESS NOTED OTHERWISE.
- DN20 & DN25 SERVICES SHALL BE DN32 PN20 PE100 CHLORBLUE CC2 RATED WITH BLUE STRIPES CLEARLY MARKED TO AS4130. EQUIVALENT PRODUCTS MUST BE APPROVED BY PWC BEFORE USE.
- SOUTHERN COMMUNITIES SOUTH OF TENNANT CREEK SHALL BE TO PWC STANDARD DRAWING W1-1-29. COPPER ALLOY SHALL BE DEZINCIFICATION RESISTANT (DR) TO AS2345.
- NO WORK ON WATER CONNECTIONS MAY COMMENCE UNTIL THE CONTRACTOR HAS PWC APPROVED COPIES OF THE SITE SERVICES PLAN AND "WATER AND SEWER CONNECTION APPLICATION FORM - REMOTE OPERATIONS" AND PAID ALL FEES.
- ONLY PWC (OR ITS AUTHORISED CONTRACTORS) ARE PERMITTED TO TAP EXISTING, IN-SERVICE (LIVE) MAINS OR MAINS THAT HAVE BEEN HYDROSTATICALLY TESTED. WITHIN LICENSED AREAS AND UPON PAYMENT OF THE NECESSARY FEES, PWC WILL PERFORM TAPPING OF LIVE MAINS, HOWEVER, EXCAVATION, ALL MATERIALS AND INSTALLATION SHALL BE SUPPLIED BY THE CONTRACTOR.
- IDENTIFY EACH PROPERTY TAKEOFF WITH A 50 x 50 x 2 ALUMINIUM PLATE IDENTIFICATION TAG WITH PROPERTY NUMBER STAMPED IN 10mm HIGH LETTERS. WIRE TAG TO METER TAP WITH 3mm GALVANISED WIRE.
- A BACKFLOW CERTIFIED PLUMBER IS REQUIRED TO DETERMINE THE RISK OF CONTAMINATION OF THE POTABLE WATER SUPPLY DUE TO CROSS CONNECTIONS AND WHERE MEDIUM HAZARD AND HIGH HAZARD RISKS ARE IDENTIFIED (REFER AS/NZS3500), PROVIDE APPROPRIATE BACKFLOW DEVICES.
- FOR DETAILS OF APPROVED PRODUCTS USED ON THIS DRAWING, REFER TO THE WATER AND SEWERAGE INFRASTRUCTURE PRODUCTS MANUAL.
- ON COMPLETION OF WATER SERVICE, PROVIDE STAINLESS STEEL OR PE PLUG FITTED TO OUTLET.
- WHERE SEPARATE BACKFLOW DEVICES ARE FITTED BY THE LAND OWNER IN ACCORDANCE WITH NOTE 6 ABOVE, WATER METERS DO NOT REQUIRE INTEGRAL DUAL CHECK VALVES.
- PE PIPES AND FITTINGS SHALL NOT BE USED IN AREAS CONTAMINATED OR EXPECTED TO BE CONTAMINATED BY PETROLEUM BASED PRODUCTS, SUCH AS SOLVENT FOR TERMITE/PEST CONTROL TREATMENT OR PAINT.
- THE EDGE OF CONCRETE METER PAD IS TO ALIGN WITH PROPERTY ROAD AND SIDE BOUNDARY.
- PE SERVICE PIPE IS TO BE INSTALLED AS A CONTINUOUS LENGTH OF PIPE WITH NO JOINS.
- MIN COVER TO SERVICE: 450mm WITHIN PROPERTY BOUNDARY, 750mm ELSEWHERE.
- ACID PICKLE/PASSIVATE COMPLETE STAINLESS STEEL ASSEMBLY AFTER WELDING.
- MINIMUM 100mm EMBEDMENT AND 150mm OVERLAY. TYPE 1 OR TYPE 4 MATERIAL FOR FULL LENGTH OF SERVICE CONNECTION.
- FOR NEW RETICULATION MAINS, INSTALL PRE-TAPPED CONNECTOR (REFER TO W1-1-23A) IN LIEU OF TAPPING BAND.

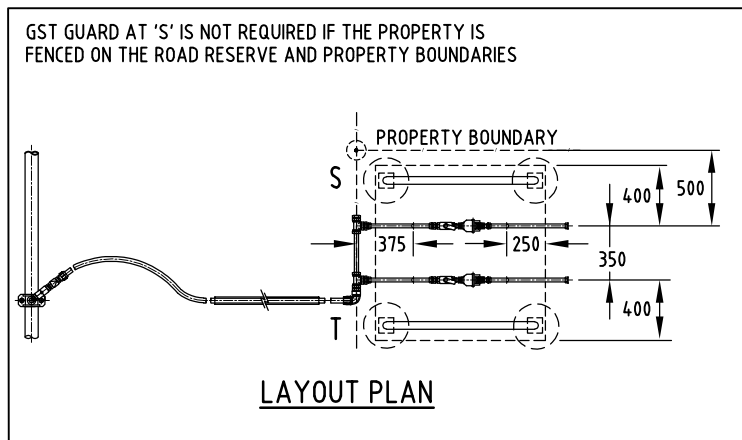


PLAN

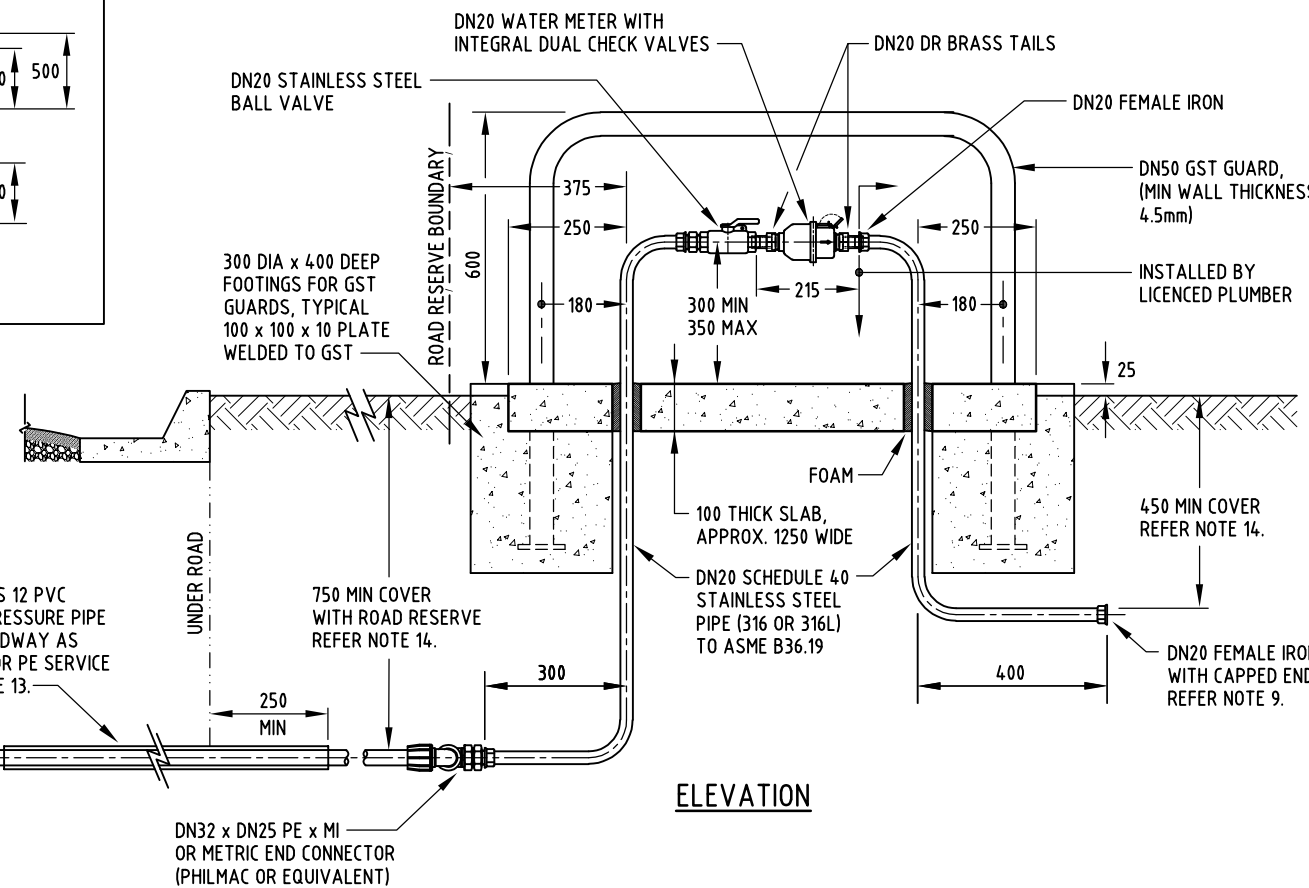
SLAB AND GST GUARDS NOT SHOWN
REFER TO LAYOUT PLAN

TABLE 1 - ACCEPTABLE EQUIVALENT SIZES

SPECIFIED NOM SIZE DN	S' STEEL DN	PE DN
20	20	32



LAYOUT PLAN



ELEVATION

DN25 SS ELBOW, DN25 SS BALL VALVE (REMOVE HANDLE)
DN25 SS SWING CHECK VALVE
DN32PE x DN25 MI CONNECTOR
(DO NOT USE PE MAIN COCK)

APPROVED TAPPING SADDLE, REFER NOTE 17.

RETICULATION MAIN

DN32 PE 100 REFER NOTE 2.

PIPE EMBEDMENT REFER NOTE 16.

DN50 CLASS 12 PVC SERIES 1 PRESSURE PIPE UNDER ROADWAY AS CONDUIT FOR PE SERVICE REFER NOTE 13.

DN32 x DN25 PE x MI OR METRIC END CONNECTOR (PHILMAC OR EQUIVALENT)

NO	DESCRIPTION	DRN	DATE	CKD	APPD
2	NOTES 2,3, FERRULE & BALL VALVE AMENDED	PW	SEPT'22	JC	DC
1	NOTES 6 & 9 AMENDED, PLAN AMENDED	AJM	MAR'11	RJ	RJ
0			APR'07		
AMENDMENTS					



DES	R.JENNINGS	WATER STANDARD DRAWING	
DRN	R.INNES	SERVICE - DN20 ABOVE GROUND METERS FOR DUPLEX	
CHK	R.JENNINGS	Polyethylene / Stainless Steel - Corrosive Conditions	
APPD	J.PUDNEY	Northern Remote Communities - North of Tennant Creek	
SCALE	N.T.S.	A3	DRAWING NUMBER ROW1-1-25
ISSUED	APR'07		2
ALL DIM. IN mm			AMDT
DRAFTING STANDARD TO A.S.1100		CAD PRODUCT - DO NOT AMEND MANUALLY	