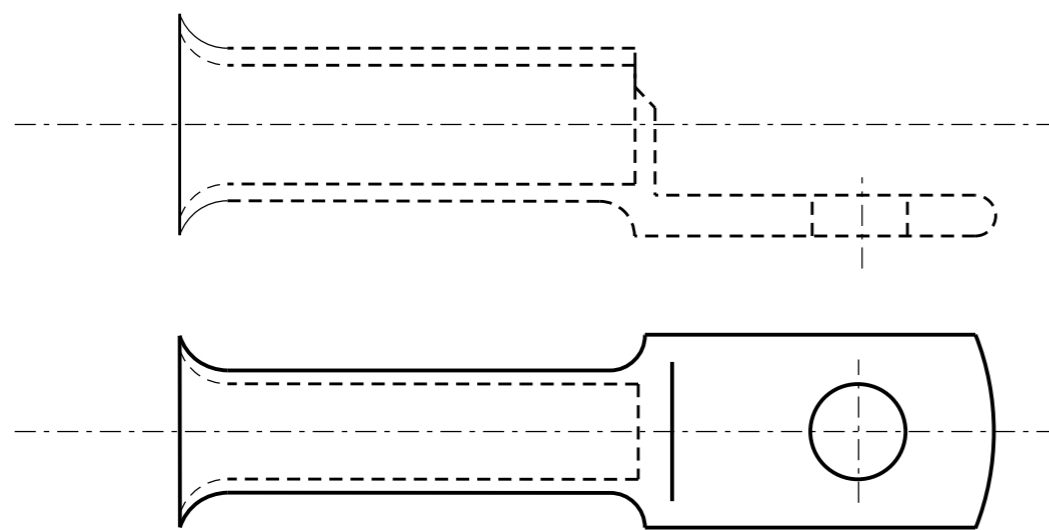


ITEM A  
STANDARD CRIMP LUG



ITEM E  
BELL MOUTH CRIMP LUG

NOTES:

1. TECHNICAL DATA

CONDUCTIVE MATERIALS:

COPPER	99.95% PURE
OXYGEN CONTENT	30 PPM MAX
TENSILE STRENGTH	200Mpa
TIN	99.9% PURE
TIN THICKNESS	5-10 MICRONS

GENERAL ELECTRICAL PROPERTIES:

TOTAL CONDUCTIVITY	99% IACS
TOTAL RESISTIVITY	1/738 MICRO-OHM-cm

2. CONFORMANT TO AUSTRALIAN STANDARD AS 4325.1

3. TORQUE RECOMMENDATIONS FOR HARDWARE BEING METRIC 8.8 TENSILE GRADE:

THREAD DIA. (mm)	TORQUE (Nm)
5	5
6	9
8	22
10	44
12	77
16	190

5	REFORMATTED TABLE, CHANGED LEGEND D. REMOVED ITEMS 38, 39, 40, 41. ADDED ITEMS 1, 3, 4, 5, 6, 7, 8, 9, 14, 16, 26, 28, 32, 34 & SHEET 2. GENERAL TEXT FORMATTING. EDITED BELL MOUTH IMAGERY.	A.N.	JUL'21	A.N.	B.V.
4	TITLEBLOCK & DRAWING NUMBER FORMATTED	K.T.	JAN'19	C.C.	C.C.
3	ITEMS 22, 25, 29, 34, 36, 37, 38, 39 & ITEM NUMBERS ADDED	A.S.	APR'07	R.S.	S.C.
2	BELL MOUTH TABLE UPDATED	K.I.	MAR'07	RAJ	-
1	BELL MOUTH LUGS ADDED	RAJ	JUL'06	RAJ	S.C.
0	ISSUED FOR CONSTRUCTION	K.I.	JUN'05	R.S.C.	C.C.
NO	DESCRIPTION	DRN	DATE	CKD	APPD
AMENDMENTS					



DES	R.S.C	POWER STANDARD DRAWING		
DRN	K.I.	LUGS COPPER CRIMP LUGS FOR STANDARD CONNECTIONS (SHEET 1 OF 2)		
CKD	C.F.C			
APPD	C.F.C			
SCALE	...			
ISSUED	MAY '05	A3	DRAWING NUMBER	S02-01-02-11_1
ALL DIM.	IN mm			
DRAFTING STANDARD TO A.S.1100		CAD PRODUCT - DO NOT AMEND MANUALLY		5 AMDT

TABLE 1: COPPER CRIMP LUGS

ITEM LEGEND:

- A → STANDARD LUG
- B → LONG BARREL LUG
- C → NARROW PALM BELL MOUTH LUG
- D → LONG PALM LONG BARREL
- E → STANDARD BELL MOUTH LUG

ITEM REF.	ITEM NUMBER	NOMINAL CONDUCTOR SIZE (mm <sup>2</sup> )	I.D.	STUD	A	B	C	D	E	A/F HEX DIE SIZE	NO. OF CRIMPS	ITEM TYPE	TOOLING		
													INDENT	HEX	
1	156190	4	3.1	M5	22	10	1.0	11	9	-	1	A	Y	-	
2	5439	16	5.5	M8	39	14	1.7	16	19	6.3	1	A	Y	Y	
3	402023		5.5	M12	46	18	2.4	23	19	19	6.3	1	B	Y	Y
4	250738	25	7.1	M6	41	14	2.4	16	21	7.7	1	A	Y	Y	
5	502282		7.1	M8	43.6	16.7	2.2	19	22	22	7.7	1	A	Y	Y
6	5470		7.1	M10	44	16	2.0	18	21	21	7.7	1	A	Y	Y
7	402959		7.1	M12	48	18	1.6	23	21	21	7.7	1	A	Y	Y
8	282277	35	8.2	M10	44	18.2	2.0	18	21	9.2	1	A	-	Y	
9	156240		8.2	M12	50	20	2.0	24	21	21	9.2	1	A	-	Y
10	402689		8.2	M12	50	20	2.3	24	21	21	9.2	1	E	-	Y
11	5496	50	9.5	M10	48	18	3.2	20	22	10.4	1	A	-	Y	
12	402020		9.5	M12	52	21	2.7	24	22	22	10.4	1	A	-	Y
13	5512	70	11.2	M12	54	21	3.3	24	24	11.5	1	A	-	Y	
14	501813		11.2	M16	64	28	2.4	24	34	34	11.5	1	A	-	Y
15	406766		11.2	M12	54	21	3.3	24	24	24	11.5	1	E	-	Y
16	156232	95	13.4	M12	60	25	3.9	26	27	14.2	1	A	-	Y	
17	5538		13.4	M16	64	28	3.4	30	27	27	14.2	1	A	-	Y
18	5553	120	15.6	M12	64	29	5.0	26	30	16.5	1	A	-	Y	
19	400864		15.6	M12	98	29	5.0	30	60	60	16.5	3	B	-	Y
20	5561	150	16.7	M16	80	32	5.5	41	30	18.3	1	A	-	Y	
21	402692		16.7	M12	80	32	5.5	41	30	30	18.3	1	E	-	Y
22	406769		16.7	M16	80	32	5.5	41	30	30	18.3	1	E	-	Y
23	5587	185	18.4	M16	83	35	5.7	41	32	20.0	2	A	-	Y	
24	406930		18.4	M12	79	31	5.2	32	32	32	20.0	1	C	-	Y
25	5595	240	21.2	-	92	40	7.1	42	38	23.1	3	A	-	Y	
26	501152		21.2	M12	142	40	7.1	50	80	80	23.1	3	B	-	Y
27	406931		21.2	M12	127	31	7.1	32	38	38	23.1	3	C	-	Y
28	285965		21.2	M16	92	40	7.1	42	38	38	23.1	3	A	-	Y
29	5611	300	23.5	-	101	45	7.8	46	47.6	26.0	3	A	-	Y	
30	402695		23.5	M12	101	45	7.8	46	42	42	26.0	3	E	-	Y
31	406932		23.5	M12	127	31	7.9	32	42	42	26.0	3	C	-	Y
32	501149		23.5	M16	101	45	7.8	46	42	42	26.0	3	E	-	Y
33	5629	400	26.8	-	114	50	7.7	52	44	28.1	3	A	Y	Y	
34	5249		26.8	M12	114	50	7.7	52	44	44	28.1	3	A	Y	Y
35	5645	500	30.0	-	124	56	8.5	56	48	31.0	2	A	-	Y	
36	406933		30.0	-	127	31	8.5	32	42	42	31.0	2	C	-	Y
37	5348		30.0	-	210	55	11.5	110	70	70	31.0	2	D	-	Y

5	REFORMATTED TABLE, CHANGED LEGEND D. REMOVED ITEMS 38, 39, 40, 41. ADDED ITEMS 1, 3, 4, 5, 6, 7, 8, 9, 14, 16, 26, 28, 32, 34 & SHEET 2. GENERAL TEXT FORMATTING.	A.N.	JUL'21	A.N.	B.V.
4	TITLEBLOCK & DRAWING NUMBER FORMATTED	K.T.	JAN'19	C.C.	C.C.
3	ITEMS 22, 25, 29, 34, 36, 37, 38, 39 & ITEM NUMBERS ADDED	A.S.	APR'07	R.S.	S.C.
2	BELL MOUTH TABLE UPDATED	K.I.	MAR'07	RAJ	-
1	BELL MOUTH LUGS ADDED	RAJ	JUL'06	RAJ	S.C.
0	ISSUED FOR CONSTRUCTION	K.I.	JUN'05	R.S.C.	C.C.
NO	DESCRIPTION	DRN	DATE	CKD	APPD
AMENDMENTS					



DES	R.S.C	POWER STANDARD DRAWING			
DRN	K.I.	LUGS COPPER CRIMP LUGS FOR STANDARD CONNECTIONS (SHEET 2 OF 2)			
CKD	C.F.C				
APPD	C.F.C				
SCALE	...				
ISSUED	MAY '05	A3	DRAWING NUMBER	S02-01-02-11_2	
ALL DIM.	IN mm			AMDT	
DRAFTING STANDARD TO A.S.1100			CAD PRODUCT - DO NOT AMEND MANUALLY		