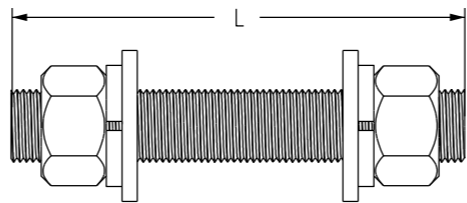


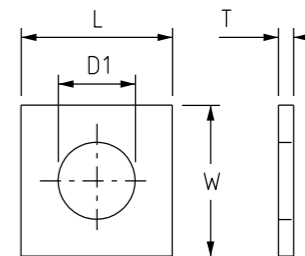
METRIC HEXAGON BOLTS WITH NUTS

SCALE N.T.S.



THREAD ROD

SCALE N.T.S.



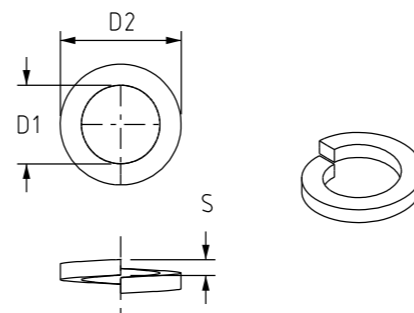
SQUARE WASHER

SCALE 1:2.5

METRIC HEXAGON BOLTS WITH NUTS								
ITEM NUMBER	BOLT SIZE	LENGTH	TYPE	ITEM NUMBER	BOLT SIZE	LENGTH	TYPE	
		L (mm)				L (mm)		
407986	M8	25	4.6 GALV. STEEL	211193	M16	50	4.6 GALV. STEEL	
409503		30		500875		60		
114363		40		211144		65		
407985		50		400799		120		
114397		25		500856		140		
407975	M10	30	4.6 GALV. STEEL	400805	M16	160	4.6 GALV. STEEL	
114462		50		114561		180		
114454		100		500857		240		
114199		130		114108		50		SS316
114207		150		114132		100		
504647	M12	30	SS316	114629	M24	50	4.6 GALV. STEEL	
114017		40		400800		65		
114025		50		400801		100		
247478		25		298372		140		8.8 GALV. STEEL
503669		40		400802		180		
502676	50	400803	220					
114488	75	415096	400					
114066	40	415097	500					
114090	100	415098	550	8.8 GALV. STEEL				
		415099	650					
		503613	100					
		416499	110					

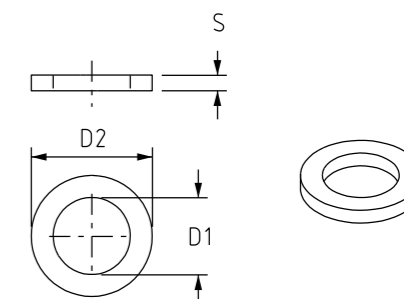
THREAD ROD			
ITEM NUMBER	NOMINAL SIZE	LENGTH	STEEL GRADE
401393	M24	1000mm	GRADE 8 HIGH TENSILE GALV

SQUARE WASHER HOT DIP GALV					
ITEM NUMBER	NOMINAL SIZE	NOMINAL DIMENSIONS (mm)			
		LENGTH	WIDTH	THICKNESS	INSIDE ϕ
		L	W	T	D1
298695	M16	65	65	5	17.5
298828	M24	75	75	5	26



HELICAL SPRING WASHER

SCALE 1:2.5



ROUND WASHER

SCALE 1:2.5

METRIC HEXAGON NUTS		
ITEM NUMBER	NOMINAL SIZE	TYPE
502002	M10	GALV. STEEL
504141	M12	
503756	M16	
503757	M24	
504649	M10	SS316
504650	M12	

HELICAL SPRING WASHERS					
ITEM NUMBER	NOMINAL SIZE	TYPE	NOMINAL DIMENSIONS (mm)		
			INSIDE ϕ	OUTSIDE ϕ	THICKNESS
			D1	D2	S
409516	M8	GALV. STEEL	8.5	15	2
114314	M10		10.5	17.5	2.2
239616	M12		12.5	21	2.5
114322	M16		16.5	27	3.5
409520	M20		21	33	4
114330	M24		25.5	40	5
407978	M8	SS316	8.2	15	2
407989	M10		10.2	18	2.2
407991	M12		12.5	21	2.5
114256	M16		16.5	27.5	3.5
114264	M20		20.5	34	4

ROUND WASHERS					
ITEM NUMBER	NOMINAL SIZE	TYPE	NOMINAL DIMENSIONS (mm)		
			INSIDE ϕ	OUTSIDE ϕ	THICKNESS
			D1	D2	S
500767	M8	GALV. STEEL	9	16	1.6
400851	M10		10.5	20	2
400832	M12		13.5	24	2.5
407060	M16		17.5	34	3
113969	M20		22	37	3
412956	M24		26	44	4
113993	M24	SS316	26	72	5
407976	M8		8.5	16	1.2
407993	M10		11	20	1.2
114280	M12		13	24	1.5
114298	M16		17	30	1.5

5	ADDED MISSING ITEMS, REFORMATTED TABLES.	A.N.	AUG'21	A.N.	B.V.
4	UPDATED DRAWING FRAME	C.C.	JUL'19	B.C.	B.V.
3	ADD M12x40 HDG BOLT	K.T.	APR'16	I.B.	B.C.
2	M24 BOLT RANGE EXTENDED	A.T.	DEC'11	B.C.	S.C.
1	ZINC PLATED BOLTS ADDED	A.T.	JAN'11	B.C.	S.C.
0	ISSUED FOR CONSTRUCTION	K.I.	MAR'05	R.C.	C.C.
NO	DESCRIPTION	DRN	DATE	CKD	APPD
	AMENDMENTS				



DES	R.S.C.	POWER STANDARD DRAWING		
DRN	K.I.	LINE HARDWARE		
CKD	R.S.C.	BOLTS, NUTS & WASHERS		
APPD	C.C.	THREADED ROD		
SCALE	AS SHOWN	A3	DRAWING NUMBER	S01-01-04-43
ISSUED	FEB '2005			
ALL DIM.	IN mm	CAD PRODUCT - DO NOT AMEND MANUALLY		
DRAFTING STANDARD	TO A.S.1100	AMDT		