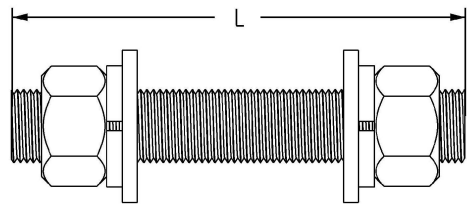


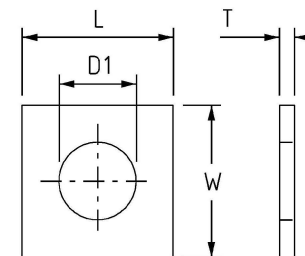
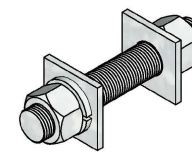
METRIC HEXAGON BOLTS WITH NUTS

SCALE N.T.S.



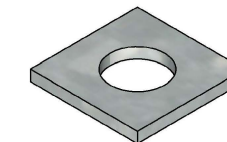
THREAD ROD

SCALE N.T.S.



SQUARE WASHER

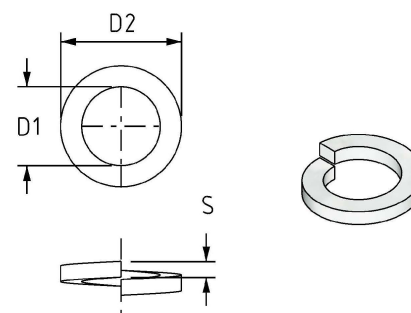
SCALE 1:2.5



METRIC HEXAGON BOLTS WITH NUTS							
ITEM NUMBER	BOLT SIZE	LENGTH	TYPE	ITEM NUMBER	BOLT SIZE	LENGTH	TYPE
						L (mm)	
407986	M8	25	4.6 GALV. STEEL	211193	M16	50	4.6 GALV. STEEL
409503		30		500875		60	
114363		40		211144		65	
407985		50		400799		120	
114397	M10	25	4.6 GALV. STEEL	500856	M16	140	4.6 GALV. STEEL
407975		30		400805		160	
114462		50		114561		180	
114454		100		500857		240	
114199	M10	130	4.6 GALV. STEEL	114108	M16	50	SS316
114207		150		114132		100	
504647	M12	30	4.6 GALV. STEEL	114629	M24	50	4.6 GALV. STEEL
114017		40		400800		65	
114025		50		400801		100	
247478		25		298372		140	
503669	M12	40	4.6 GALV. STEEL	400802	M24	180	4.6 GALV. STEEL
502676		50		400803		220	
114488		75		415096		400	
505137		120		415097		500	
505138	M12	140	4.6 GALV. STEEL	415098	M24	550	4.6 GALV. STEEL
505164		160		415099		650	
114066	M12	40	SS316	503613	M24	100	8.8 GALV. STEEL
114090		100		416499		110	

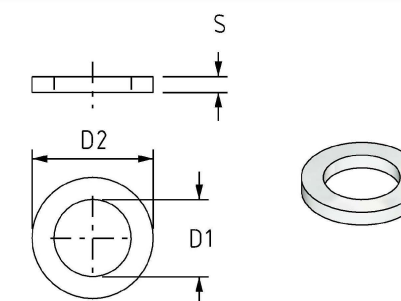
THREAD ROD			
ITEM NUMBER	NOMINAL SIZE	LENGTH	STEEL GRADE
401393	M24	1000mm	GRADE 8 HIGH TENSILE GALV.

SQUARE WASHER HOT DIP GALV					
ITEM NUMBER	NOMINAL SIZE	NOMINAL DIMENSIONS (mm)			
		LENGTH	WIDTH	THICKNESS	INSIDE ϕ
		L	W	T	D1
298695	M16	65	65	5	17.5
298828	M24	75	75	5	26



HELICAL SPRING WASHER

SCALE 1:2.5



ROUND WASHER

SCALE 1:2.5

METRIC HEXAGON NUTS		
ITEM NUMBER	NOMINAL SIZE	TYPE
502002	M10	GALV. STEEL
504141	M12	
503756	M16	
503757	M24	
504649	M10	SS316
504650	M12	

HELICAL SPRING WASHERS					
ITEM NUMBER	NOMINAL SIZE	TYPE	NOMINAL DIMENSIONS (mm)		
			INSIDE ϕ	OUTSIDE ϕ	THICKNESS
			D1	D2	S
409516	M8	GALV. STEEL	8.5	15	2
114314	M10		10.5	17.5	2.2
239616	M12		12.5	21	2.5
114322	M16		16.5	27	3.5
409520	M20		21	33	4
114330	M24		25.5	40	5
407978	M8	SS316	8.2	15	2
407989	M10		10.2	18	2.2
407991	M12		12.5	21	2.5
114256	M16		16.5	27.5	3.5
114264	M20		20.5	34	4

ROUND WASHERS					
ITEM NUMBER	NOMINAL SIZE	TYPE	NOMINAL DIMENSIONS (mm)		
			INSIDE ϕ	OUTSIDE ϕ	THICKNESS
			D1	D2	S
500767	M8	GALV. STEEL	9	16	1.6
400851	M10		10.5	20	2
400832	M12		13.5	24	2.5
407060	M16		17.5	34	3
113969	M20		22	37	3
412956	M24		26	44	4
113993	M24	SS316	26	72	5
407976	M8		8.5	16	1.2
407993	M10		11	20	1.2
114280	M12		13	24	1.5
114298	M16		17	30	1.5

- 6 ADDED NEW LENGTHS FOR M12 BOLTS.
- 5 ADDED MISSING ITEMS, REFORMATTED TABLES.
- 4 UPDATED DRAWING FRAME
- 3 ADD M12x40 HDG BOLT
- 2 M24 BOLT RANGE EXTENDED
- 1 ZINC PLATED BOLTS ADDED
- 0 ISSUED FOR CONSTRUCTION

NO	DESCRIPTION	DRN	DATE	CKD	APPD
		J.R.	DEC'24	B.B.	B.V.
		A.N.	AUG'21	A.N.	B.V.
		C.C.	JUL'19	B.C.	B.V.
		K.T.	APR'16	I.B.	B.C.
		A.T.	DEC'11	B.C.	S.C.
		A.T.	JAN'11	B.C.	S.C.
		K.I.	MAR'05	R.C.	C.C.



DES		R.S.C.		POWER STANDARD DRAWING	
DRN	K.I.			LINE HARDWARE	
CKD	R.S.C.			BOLTS, NUTS & WASHERS	
APPD	C.C.			THREADED ROD	
SCALE	AS SHOWN				
ISSUED	FEB '2005	A3	DRAWING NUMBER	S01-01-04-43	
ALL DIM.	IN mm				
DRAFTING STANDARD TO A S.1100		CAD PRODUCT - DO NOT AMEND MANUALLY		AMDT	