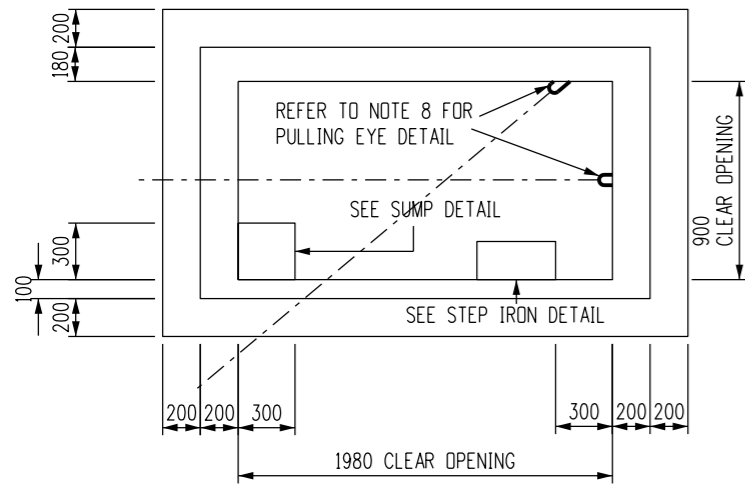
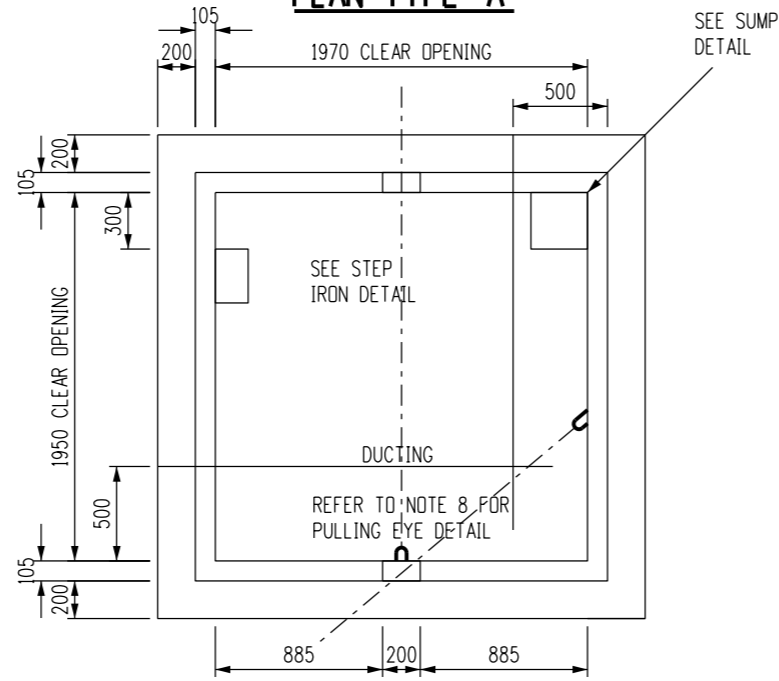


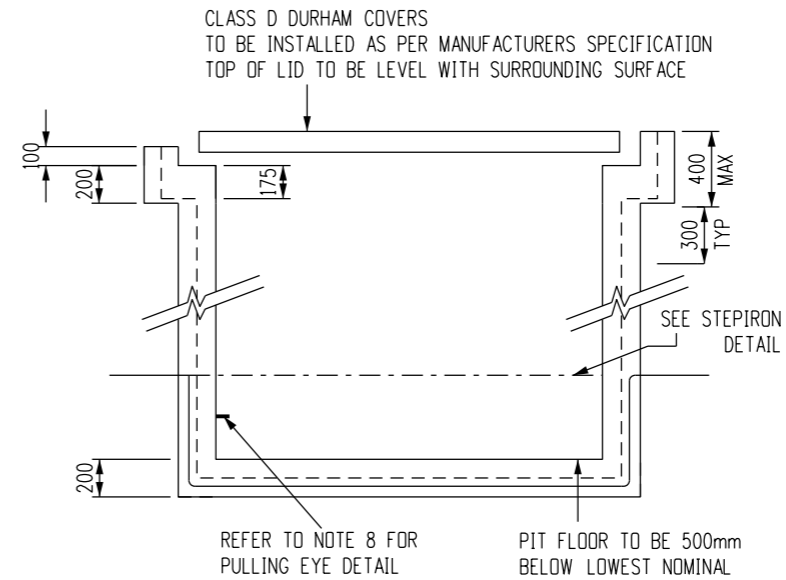
PLAN TYPE 'C'



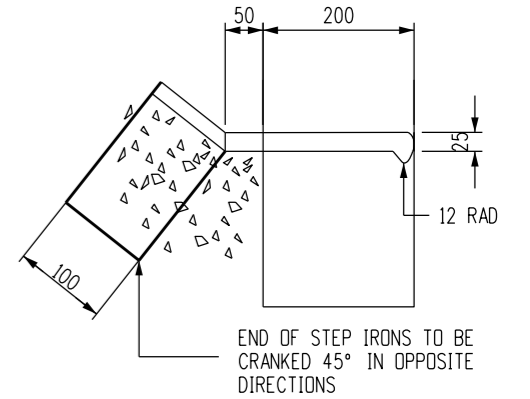
PLAN TYPE 'A'



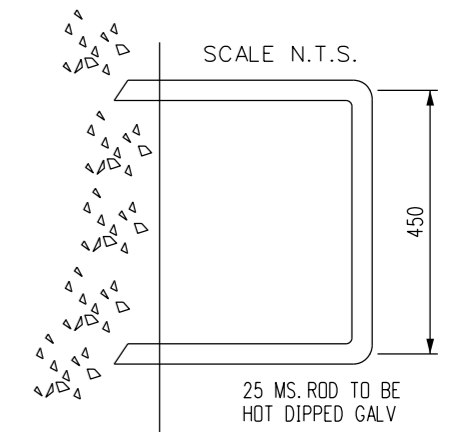
TYPICAL SECTION



SCALE N.T.S.

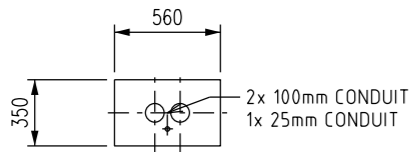


STEP IRON DETAIL (NOTE 9)

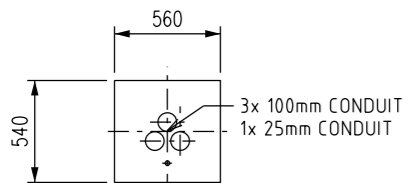


PIT WALL REINFORCING AT CONDUIT ENTRY

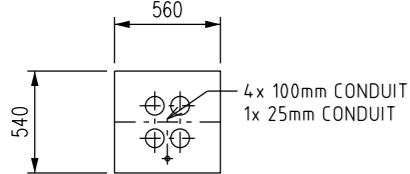
2 WAY



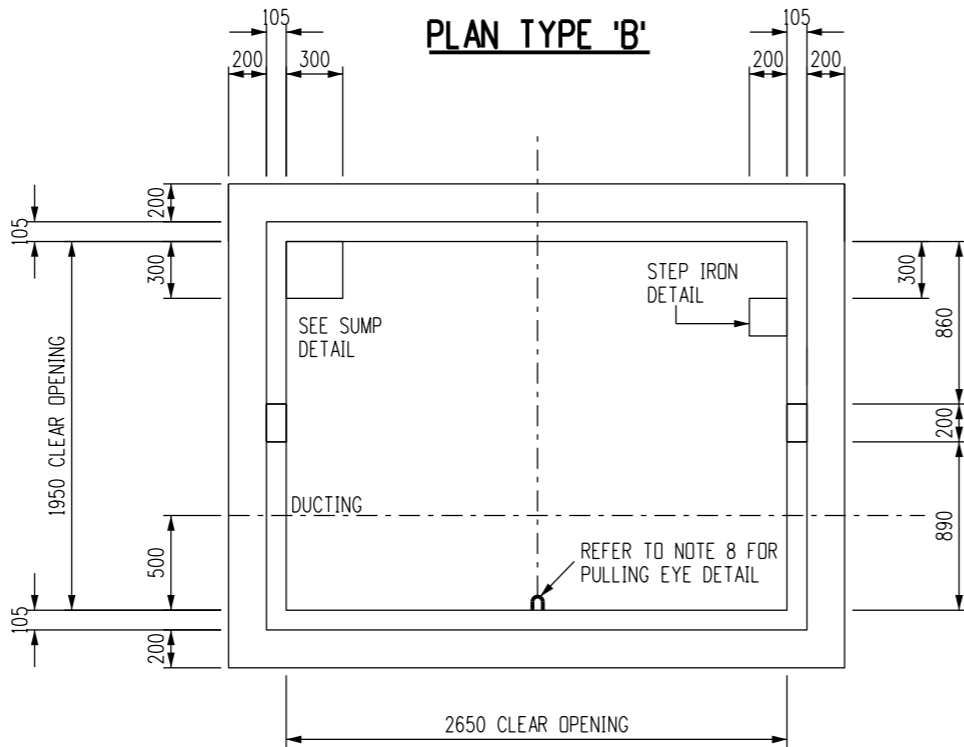
3 WAY



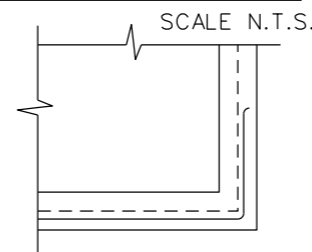
4 WAY



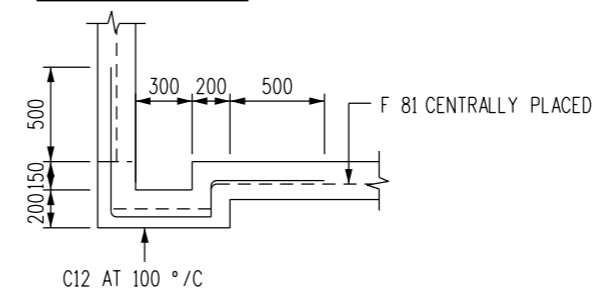
PLAN TYPE 'B'



TYPICAL SIDE END WALL REINFORCING DETAIL



SUMP DETAILS



NOTES:

1. ALL CONCRETE SHALL BE GRADE 20/20.
3. ALL REINFORCEMENT MESH F81 CENTRALLY PLACED IN WALLS.
4. ALL CONDUITS TO BE PROVIDED WITH DRAW WIRE AND CAPPED.
5. PWC TO INSPECT PRIOR TO POURING CONCRETE.
7. ALL CONDUIT TO BE ORANGE HD COMPLYING WITH AS 2053.1.
8. ONCE THE POSITION OF THE INCOMING CABLE DUCT IS ESTABLISHED, THE EXACT LOCATION OF PULLING EYES IS TO BE IDENTIFIED. WHEREVER FEASIBLE, PULLING EYES SHOULD BE ALIGNED WITH THE CABLE DUCTS. FOR PULLING EYE DETAILS, REFER TO S02-02-07-45.
9. STEPS MAY BE DIFFERENT MATERIAL AS SPECIFIED. REFER TO AS1657:2018 FOR ACCEPTABLE ALTERNATIVES.

NO	DESCRIPTION	DRN	DATE	CKD	APPD
4	TYPE 'C' DIMENSION AMENDED. PULLING EYE DETAIL REMOVED AND NEW REFERENCE ADDED. REMOVED NOTE 2. NOTES 8 AND 9 ADDED.	P.BH.	SEP'22	B.C.	B.V.
3	REMOVED NOTE 6 & CU EARTH STRAP, REPLACED WITH 25mm CONDUIT. ADDED CONDUIT DETAIL & NOTE 7.	A.N.	MAY'21	A.N.	B.C.
2	TITLEBLOCK & DRAWING NUMBER FORMATTED	K.T.	FEB'19	C.C.	C.C.
1	REDRAWN IN CAD, DIMENSIONS UPDATED	C.C.	OCT'11	A.T.	S.C.
AMENDMENTS					



DES	A.T.	POWER STANDARD DRAWING		
DRN	C.COPPINS	CIVIL STANDARD CABLE PITS PLAN & DETAILS		
CKD	A.T.			
APPD	A.T.			
SCALE	1:40			
ISSUED	JUL'11	A3	DRAWING NUMBER	S02-02-06-10
ALL DIM.	IN mm			
DRAFTING STANDARD TO A.S.1100		CAD PRODUCT - DO NOT AMEND MANUALLY		AMDT