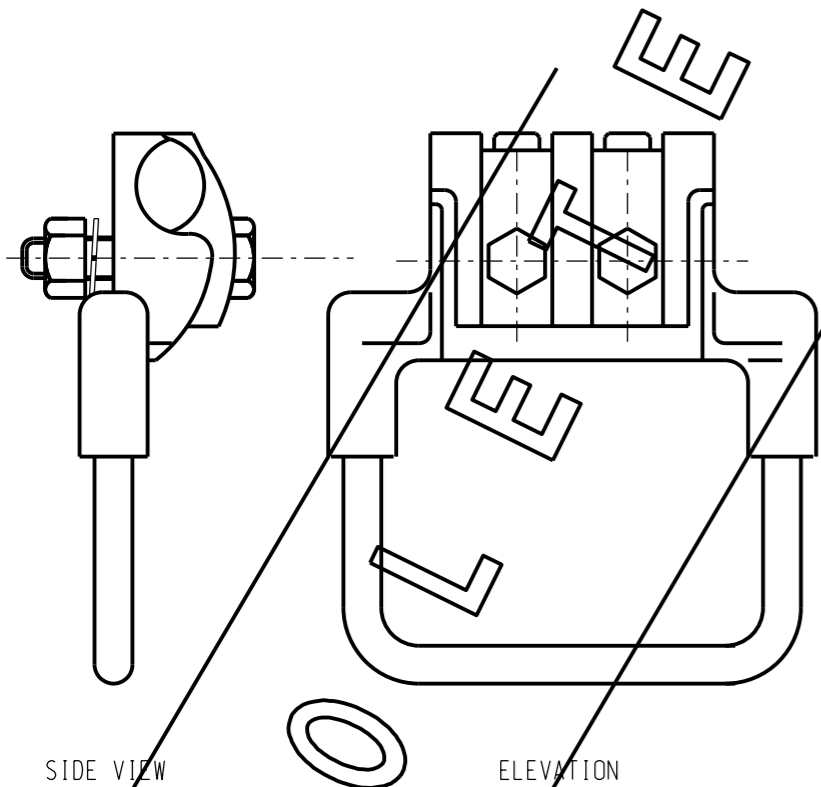


3RD ANGLE -DO NOT SCALE - REPORT ANY ERRORS, OMISSIONS TO DRAFTING OFFICE



SIDE VIEW ELEVATION

ITEM 1
CLAMP - ALUMINIUM BAIL

ITEM NUMBER: 5603

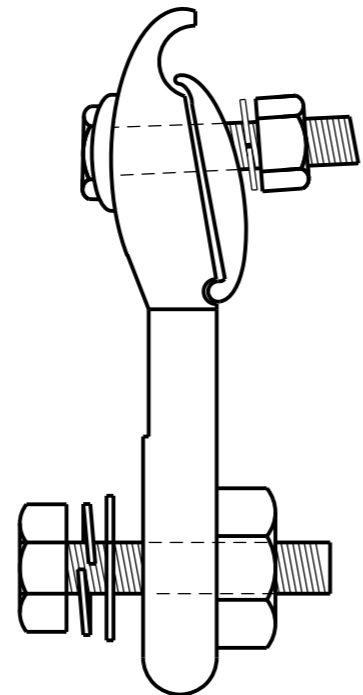
MATERIALS CLAMP - HIGH CONDUCTIVITY ALUMINIUM
BOLTS - STAINLESS STEEL

CONDUCTOR SIZE: MIN. 7/2.25
MAX. 19/3.75

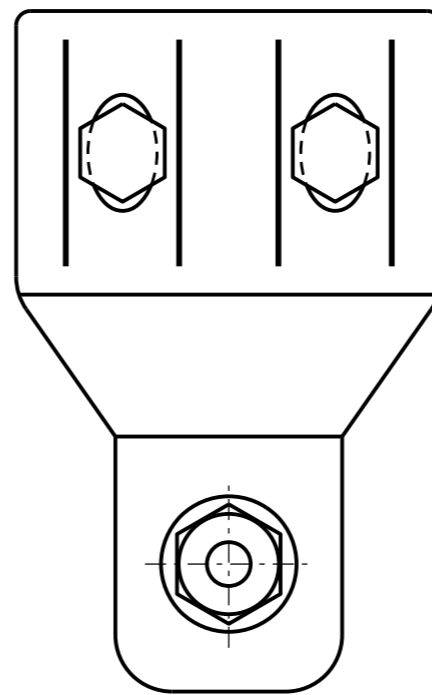
CURRENT RATING - 200A

NOTES

1. FITTING TO BE PREFILLED WITH INHIBITOR COMPOUND.
2. FITTING TO BE IDENTIFIED WITH SIZE RANGE.
3. FITTING TO BE INDIVIDUALLY PACKED IN PLASTIC BAGS.



SIDE VIEW, NOT TO SCALE



ELEVATION

ITEM 2
CLAMP - DISCONNECT - TEE

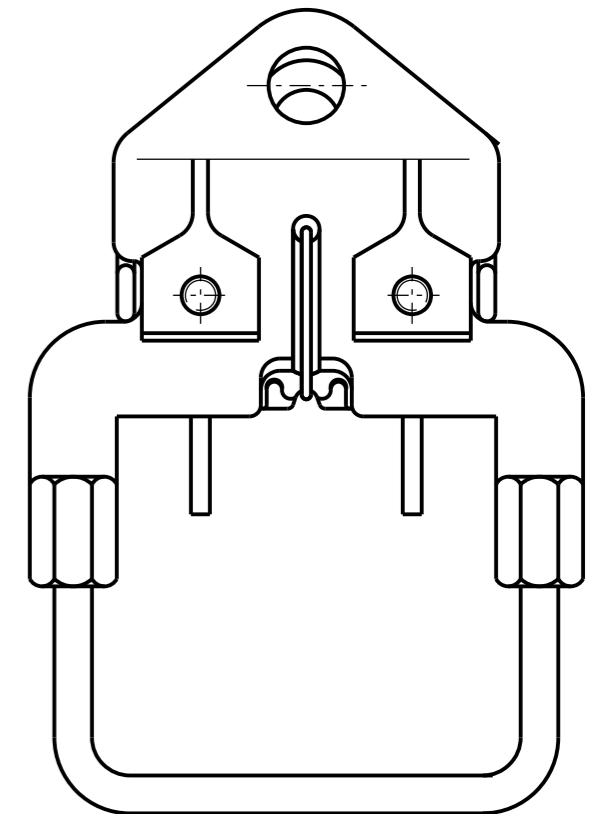
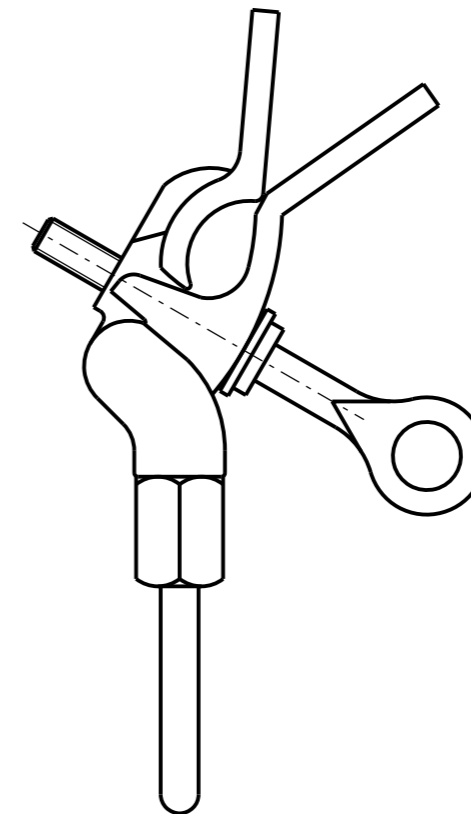
ITEM NUMBER: 2295 - HIGH STRENGTH TINNED ALUMINIUM.

MATERIALS: CLAMP - HIGH STRENGTH ALUMINIUM
BODY - TINNED BRONZE WITH M12
STAINLESS STEEL STUD C/W HEX. NUT

HARDWARE - STAINLESS STEEL

CONDUCTOR SIZE: MIN. 7/2.50 (7mm)
MAX. 19/3.75 (19mm)

FOR ALUMINIUM TO COPPER CONNECTIONS
CURRENT RATING - 500A



ITEM 3
CLAMP - ALUMINIUM BAIL LIVE LINE

ITEM NUMBER: 238915 (200A)

ITEM NUMBER: 239020 (420A)

MATERIALS - CLAMP - HIGH CONDUCTIVITY ALUMINIUM
BOLTS - ALUMINIUM CASTING

CONDUCTOR SIZE (200A): MIN. 4.11mm, MAX. 11.35mm
CONDUCTOR SIZE (420A): MIN. 10.11mm, MAX. 20.68mm
CURRENT RATINGS: 200A & 420A

NO	DESCRIPTION	DRN	DATE	CKD	APPD
16	ITEM 2 CHANGED BAIL MATERIAL FROM TINNED BRONZE WITH M16 TO M12	J.R.	MAR'24	B.B.	P.B.
15	ADDED 'NOT TO SCALE' FOR ITEM 2 SIDE VIEW & CHANGED 'BAIL' TO 'BODY'	R.A.	JUL'21	C.C.C.	B.V.
14	UPDATE MIN & MAX CONDUCTOR SIZES FOR LIVE LINE BAIL	CWM	FEB'20	H.E.	B.V.
13	TITLEBLOCK & DRAWING NUMBER FORMATTED	K.T.	DEC'18	C.C.	C.C.
12	ITEM 1 MARKED AS OBSOLETE	C.M.	05/10	A.T.	S.C.
11	ITEM 2 ADDED CLAMP DISC TEE	K.I.	01/05	R.C.	C.C.
10	ITEM 2 MADE OBSOLETE (REPLACED BY S01-1-4-25 ITEM 2)	A.S.	09/04	R.C.	M.B.
9	LIVE LINE BAIL CLAMP ITEM 3 ADDED/ITEM 1 MADE OBSOLETE	A.S.	05/04	R.C.	M.B.
AMENDMENTS					



DES	D.LARDNER	POWER STANDARD DRAWING		
DRN	A.DAVIS	LINE HARDWARE CLAMPS DISCONNECT, TEE AND BAIL		
CKD	R.INNES			
APPD	F.ROBSON			
SCALE	N.T.S.			
ISSUED	MAY'98	A3	DRAWING NUMBER	S01-01-04-10
ALL DIM.	IN mm			
DRAFTING STANDARD TO A.S.1100		CAD PRODUCT - DO NOT AMEND MANUALLY		

