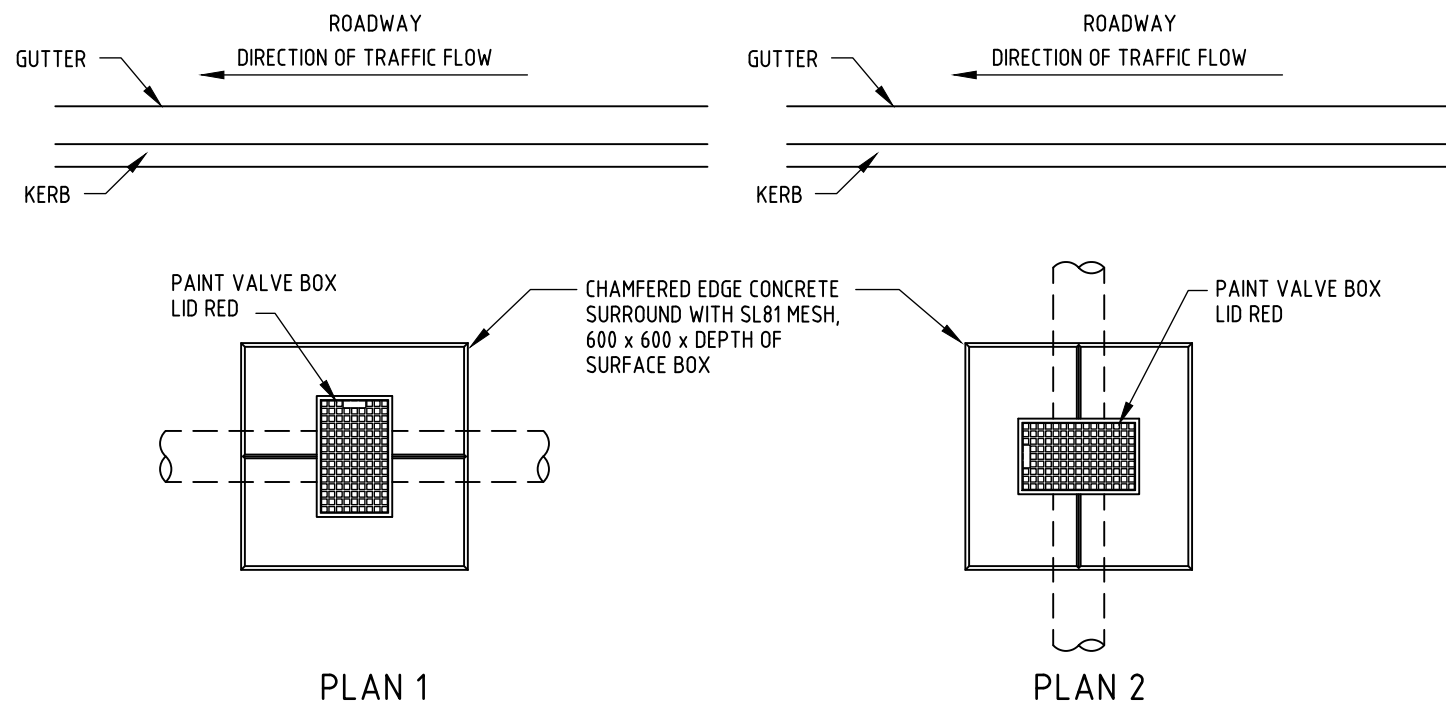
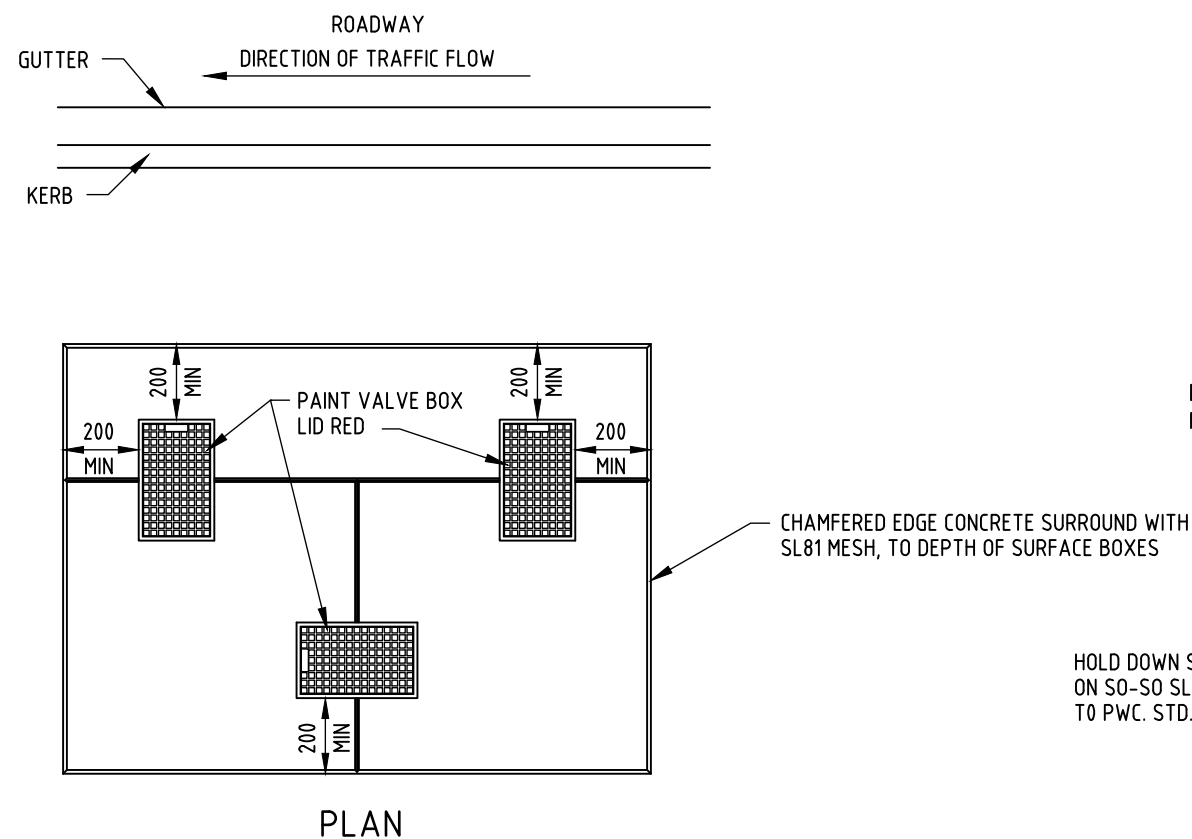


FOR POTABLE WATER ONLY



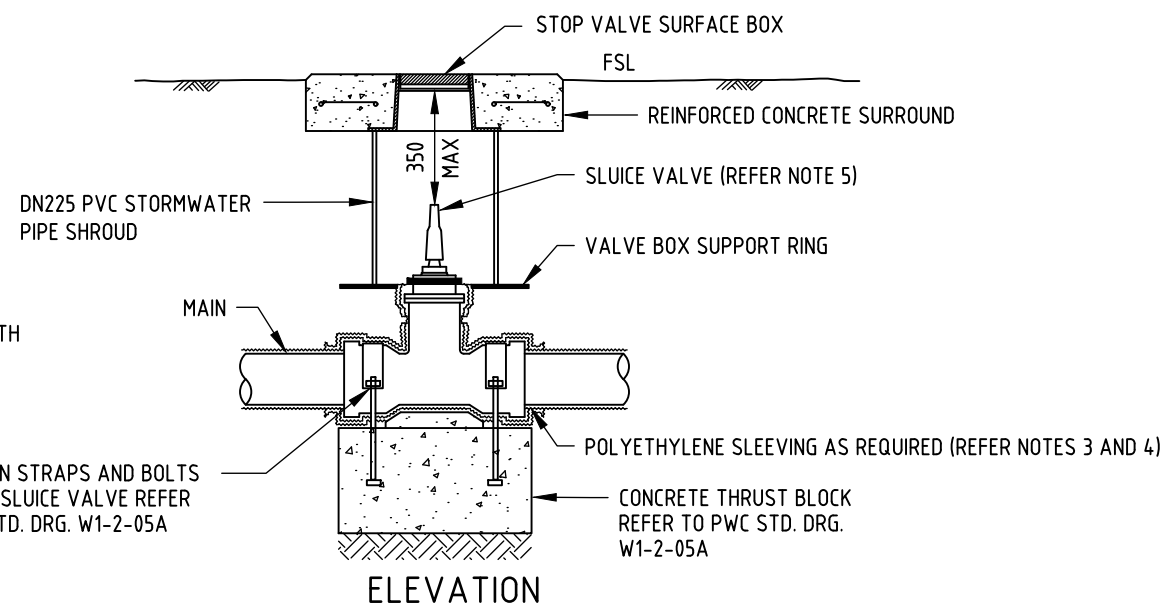
ORIENTATION OF SURFACE BOX IN NATURE STRIP



TWO OR MORE VALVE BOXES INSTALLATION IN NATURE STRIP

NOTES

1. ALL DIMENSIONS ARE IN MILLIMETRES UNLESS NOTED OTHERWISE.
2. KEEP SLUICE VALVE SHROUD CLEAR OF VALVE TO PREVENT THE TRANSFER OF TRAFFIC LOAD TO THE PIPELINE.
3. READ THIS DRAWING IN CONJUNCTION WITH STANDARD DRAWING NUMBER W1-2-17A MAINLAYING APPLICATION OF POLYETHYLENE SLEEVING FOR CORROSION PROTECTION OF DICL PIPES AND STANDARD DRAWING NUMBER W1-2-17B MAINLAYING APPLICATION OF POLYETHYLENE SLEEVING FOR CORROSION PROTECTION OF DICL FITTINGS.
4. FOR DICL MAINS, WRAP PIPES AND FITTINGS WITH POLYETHYLENE SLEEVING. FOR PVC OR GRP MAINS, USE APPROVED DI FITTINGS HAVING INTERNAL AND EXTERNAL POLYMERIC COATING. SUBJECT TO WATER AND SEWAGE INFRASTRUCTURE PRODUCTS MANUAL USAGE LIMITATIONS. DICL FITTINGS WRAPPED IN POLYETHYLENE SLEEVING CAN BE USED AS AN ALTERNATIVE.
5. PROVIDE AN EXTENSION SPINDLE WHERE THE TOP OF THE VALVE IS GREATER THAN 350mm BELOW FSL.
6. PROVIDE BEDDING, OVERLAY AND BACKFILL IN ACCORDANCE WITH THE PROJECT SPECIFICATION.
7. CONCRETE FOR THRUST AND ANCHOR BLOCKS & GENERAL CONCRETING SHALL BE CLASS N25 IN ACCORDANCE WITH AS.1379 AND AS.3600.
8. ENGRAVE OR SCORE GROOVE ACROSS SURFACE OF SURROUND TO INDICATE DIRECTION OF MAIN. DIRECTION MARKING TO BE 10-15mm WIDE x 5-8mm DEEP.
9. IF GROUND SLOPES SIGNIFICANTLY TOWARDS OR AWAY FROM THE KERB, PLACE THE HINGED SIDE OF THE LID ON THE HIGHER SIDE, OTHERWISE HINGE TOWARDS KERB.
10. USE ONLY THOSE MANUFACTURERS' PRODUCTS SHOWN APPROVED IN THE WATER AND SEWAGE INFRASTRUCTURE PRODUCTS MANUAL.
11. LONG SIDE OF SURFACE BOX IS TO BE PERPENDICULAR TO THE DIRECTION OF WATER MAINS. HINGED SIDE OF THE LID IS TO FACE TOWARDS ONCOMING TRAFFIC OR THE NEAREST ADJACENT ROAD LANE TRAFFIC.
12. LIDS LOCATED IN CONCRETE PATHS AND DRIVEWAYS TO BE CONCRETED IN-SITU.
13. TWO OR MORE VALVE BOXES CLOSE TOGETHER TO BE CONCRETED IN-SITU.
14. DO NOT CUT PRECAST CONCRETE VALVE BOX SURROUNDS.



SLUICE VALVE INSTALLATION IN NATURE STRIP WITHOUT SEPARATE IN-LINE ANCHORAGE (FOR HORIZONTAL THRUST)

5	INCLUSION OF TRAFFIC FLOW DIRECTION.	J.W.	JAN'24	J.C.	D.C.
4	GENERAL AMENDMENTS 2021.	P.W.	DEC'21	J.R.	D.C.
3	REDRAWN IN AUTOCAD.	A.W.	OCT'18	J.R.	D.C.
2	NOTES 9 AND 11 AMENDED.	R.G.I.	NOV'06	R.J.	J.P.
1	UPDATE MESH DETAILS.	K.I.	NOV'05	R.J.	R.J.
NO	DESCRIPTION	DRN	DATE	CKD	APPD
AMENDMENTS					



DES	N.W.M.	WATER STANDARD DRAWING		
DRN	R.G.I.	MAINLAYING		
CHK	W.H.	SLUICE VALVE		
APPD	N.W.M.	INSTALLATION IN NATURE STRIP		
SCALE	N.T.S.	A3	DRAWING NUMBER	W1-2-03J
ISSUED	AUG'03			
ALL DIM. IN mm				5
DRAFTING STANDARD TO A.S.1100		CAD PRODUCT - DO NOT AMEND MANUALLY		
		AMDT		