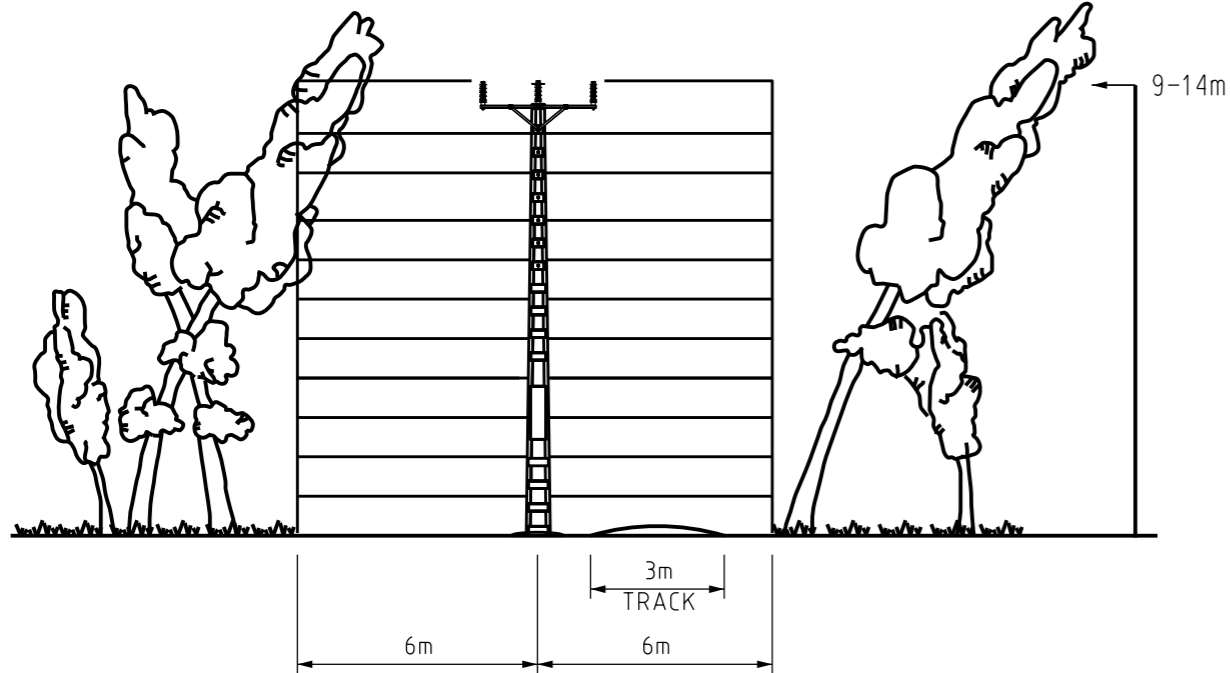
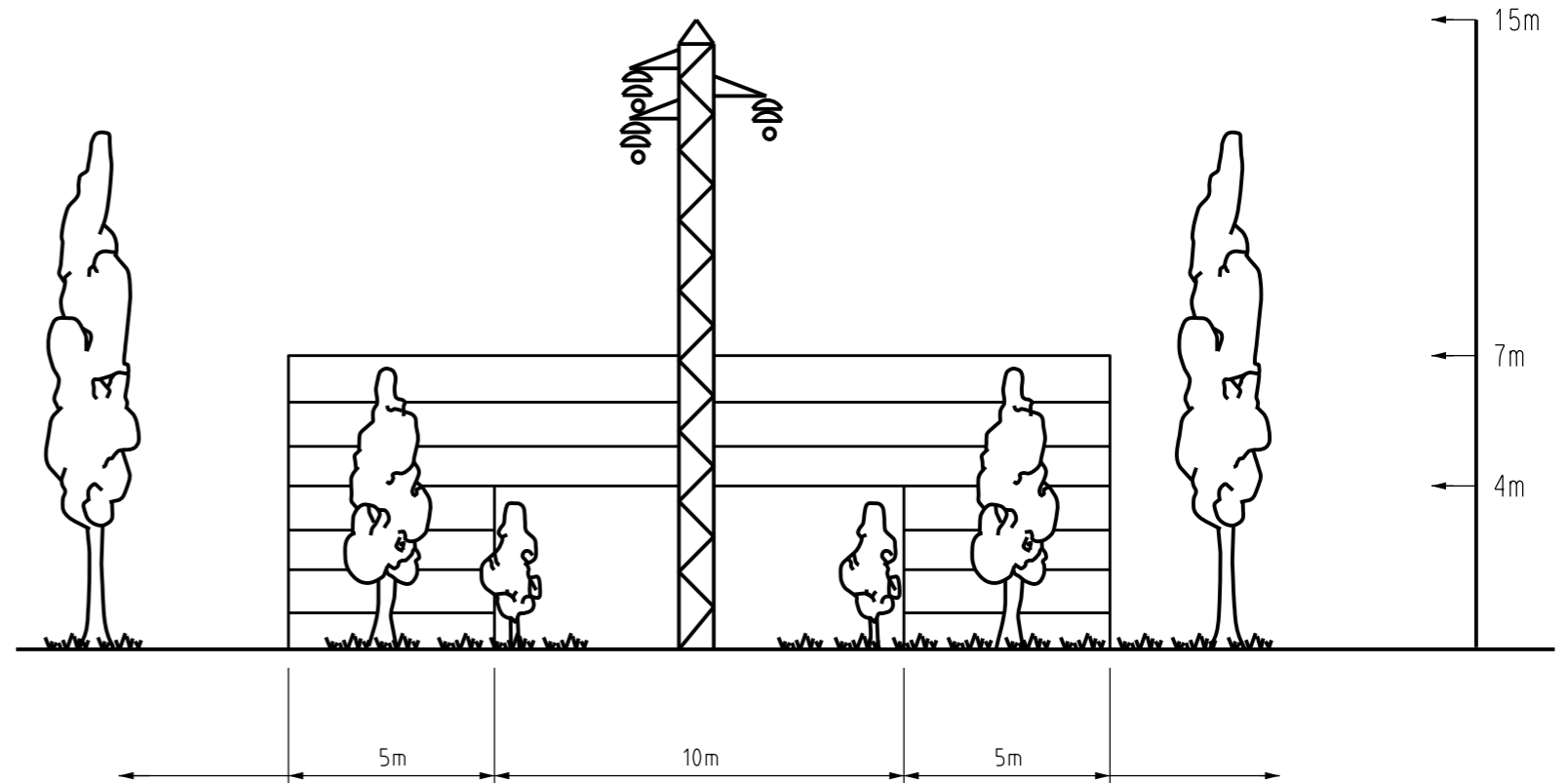


POSSIBLE HAZARD
TO BE REMOVED IF
HIGHER THAN CONDUCTOR

NO LIKELIHOOD OF
DANGER TO LINE
DO NOT REMOVE



**ROUTE CLEARING
RURAL DISTRIBUTION**



**ALLOWABLE TREE HEIGHTS
ADJACENT TO TRANSMISSION LINES**

HEIGHT NOT TO EXCEED
DISTANCE FROM BASE OF
TOWER MINUS 2m (BOTH SIDES)

NOTES:

1. IN THE INTEREST OF CONSERVATION THE ROUTE CLEARING SHOULD BE CONFINED TO 12m. TREES OVERHANGING THE 12m CLEARING SHOULD BE SELECTIVELY LOPPED OR REMOVED.
2. TREES ARE TO BE CUT AT GROUND LEVEL AND ROOTS LEFT, EXCEPT IN THE 3m WIDE TRACK.
3. LOW SCRUB UNDER 1m NEED NOT TO BE CLEARED IN ORDER TO MINIMISE EROSION.
4. AN ACCESS TRACK 3m WIDE IS TO BE BUILT ALONG THE CLEARING IN AREAS NOT CLOSE TO A ROAD. WHERE CLEARING IS CLOSE TO A ROAD, TRACKS TO EACH POLE POSITION SHOULD BE BUILT. FOR POWERLINES INSIDE PRIVATE PROPERTY A 3m ACCESS TRACK SHALL BE BUILT.
5. TREES OUTSIDE THE 12m CLEARING THAT PRESENT A HAZARD TO THE LINE SHALL BE LOPPED TO REDUCE THE RISK BOTH TO THE TREE OWNER AND POWER AND WATER.
A HAZARD IS DEFINED AS A TREE WHICH, IF IT FELL FROM ITS BASE ACROSS THE CLEARING, WOULD STRIKE THE CONDUCTOR OR IN WINDY CONDITIONS WOULD CAUSE BRANCHES TO CONTACT LIVE POWER LINES.
IT IS THE TREE OWNERS' RESPONSIBILITY TO ENSURE THAT THEIR TREES DO NOT INTERFERE WITH POWER LINES AND THEY SHOULD BE MADE AWARE OF HAZARDOUS TREES. SUCH TREES COULD ALSO CAUSE FIRES DUE TO ARCING.

NO	DESCRIPTION	DRN	DATE	CKD	APPD
5	REINSTATE MISSING DIMENSIONS	C.C.	APR'22	B.V.	B.C.
4	TITLEBLOCK & DRAWING NUMBER FORMATTED	K.T.	APR'19	C.C.	C.C.
3	NOTE 4 AMENDED	J.C.	NOV'08	B.C.	S.C.
2	REDRAWN IN CAD, NOTES AND AMENDMENTS ADDED	K.I.	JUN'05	R.C.	C.C.
1	TITLE & NUMBER CHANGED	-	OCT'87	-	-
AMENDMENTS					



DES		POWER STANDARD DRAWING	
DES	J.HASSANEN		
DRN	R.HAIGH		
CKD	E.HENDERSON	DESIGN DATA ROUTE CLEARANCE DISTRIBUTION & TRANSMISSION LINES	
APPD	F.EVA		
SCALE	N.T.S.		
ISSUED	26/6/79	A3	DRAWING NUMBER S01-04-01-04
ALL DIM. IN mm			
DRAFTING STANDARD TO A.S.1100		CAD PRODUCT - DO NOT AMEND MANUALLY	

