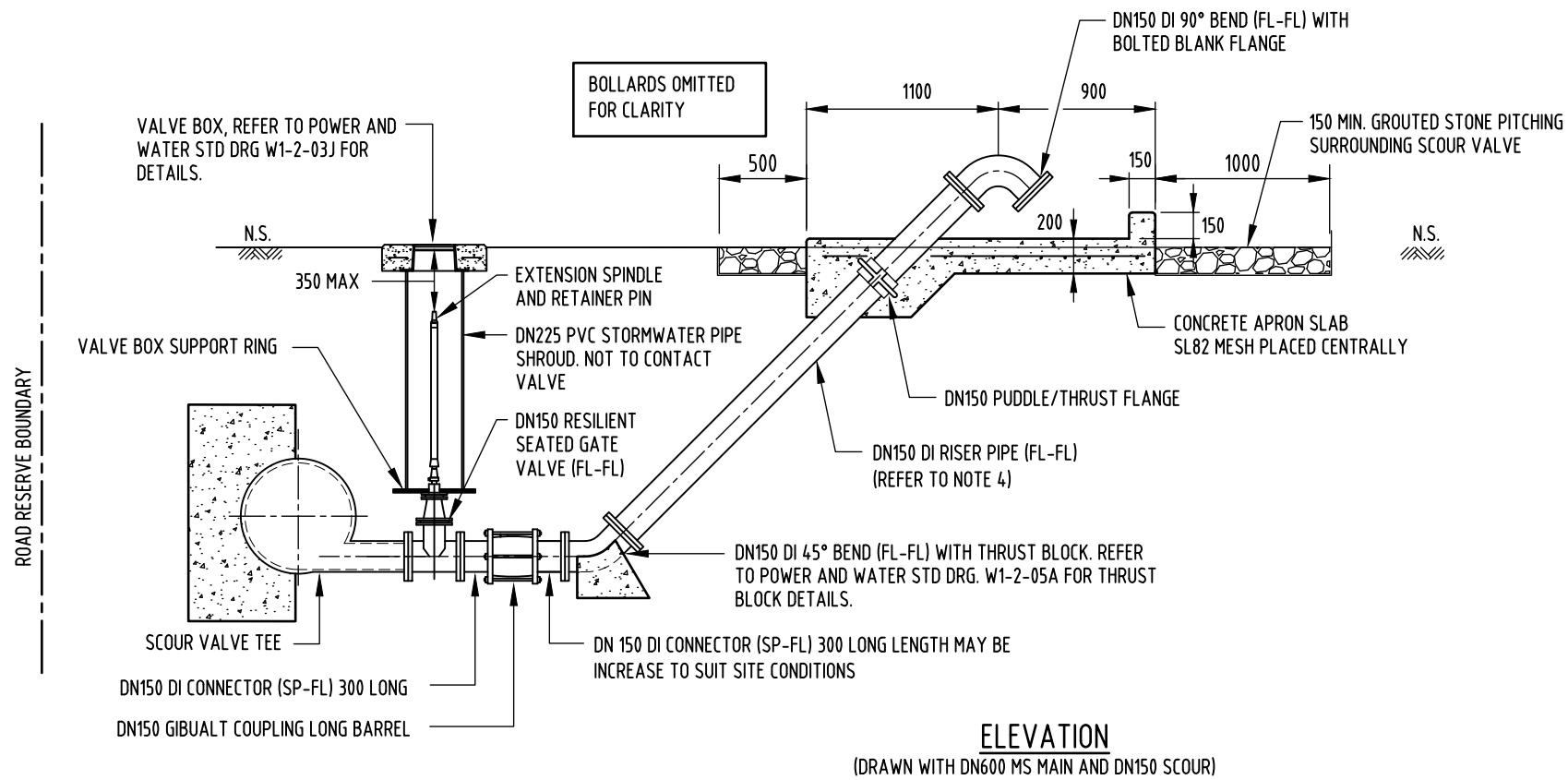
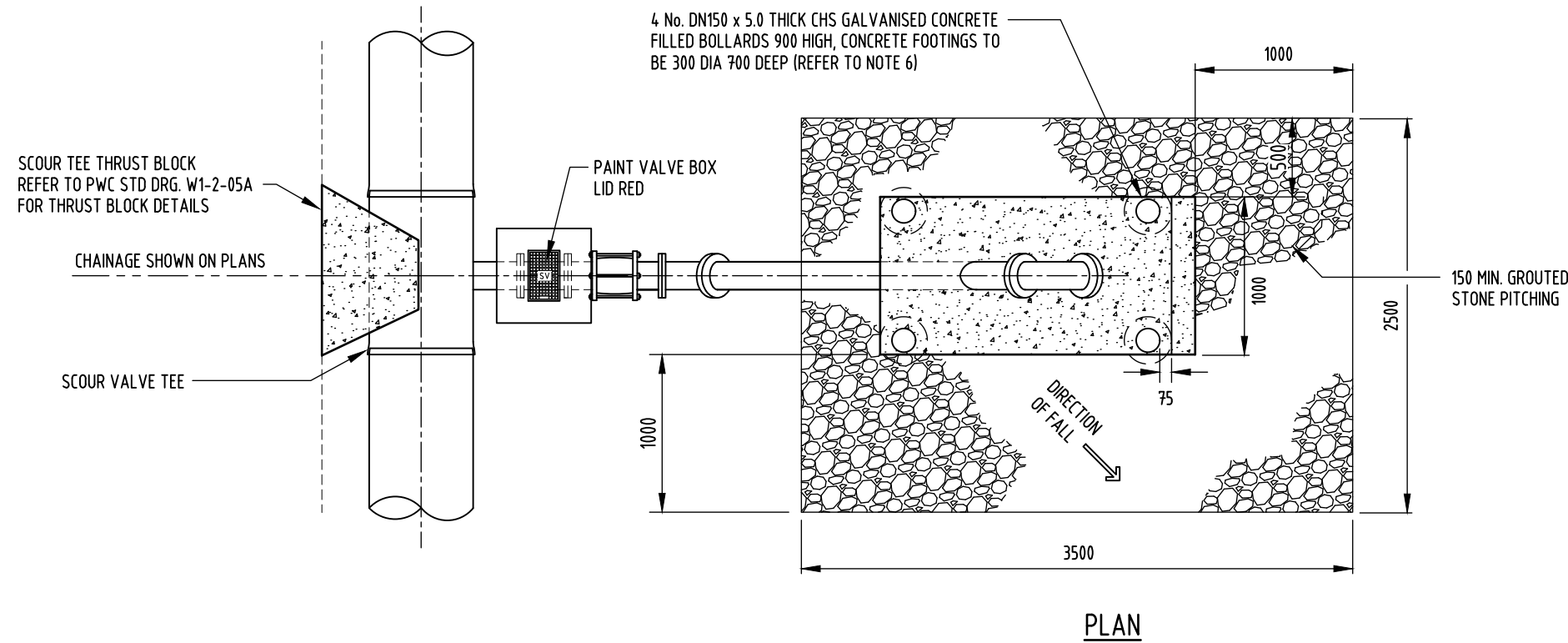


**FOR POTABLE WATER ONLY**

**THIS ASSEMBLY IS NOT TO BE USED FOR SEWERAGE INSTALLATIONS**



**ELEVATION**  
(DRAWN WITH DN600 MS MAIN AND DN150 SCOUR)



**PLAN**

**NOTES**

- ALL DIMENSIONS ARE IN MILLIMETRES UNLESS NOTED OTHERWISE.
- USE DN100, DN150 OR DN200 PIPE AND FITTINGS AS APPROPRIATE.
- DUCTILE IRON PIPE AND FITTINGS ON SCOUR TO BE FULLY ENCAPSULATED WITH POLYMERIC COATING.
- FOR BURIED FLANGED JOINTS, USE STAINLESS STEEL BOLTS (CLASS 50 UP TO PN16, CLASS 70 ABOVE PN16) WITH STAINLESS STEEL WASHERS UNDER BOLT HEAD AND NUT.
- FLANGE ADAPTOR SHOWN ON SCOUR PIPE TO ASSIST CONSTRUCTION. FLANGED PIPE OF APPROPRIATE LENGTH (AND WITHOUT FLANGE ADAPTOR) CAN BE USED BETWEEN BENDS AS ALTERNATIVE.
- LOCATION OF BOLLARDS CAN BE ALTERED WITH PWC APPROVAL, TO SUIT SITE REQUIREMENTS.
- GENERALLY SCOUR VALVE ARRANGEMENTS ARE TO BE LOCATED ON THE ROAD SIDE OF MAIN.
- REFER TO PLANS, LONGITUDINAL SECTIONS AND PIPE SCHEMATIC DETAILS FOR PREFERRED LOCATION / ORIENTATION OF SCOUR OUTLETS.
- OUTLET LOCATIONS SHALL BE CONFIRMED ON SITE WITH SUPERINTENDENT.
- ROTATE 90° PARALLEL TO MAIN FOR SCOUR VALVE INSTALLATION ON DEEP MAIN.

MINIMUM SCOUR SIZE	
MAIN SIZE	SCOUR SIZE
< DN200	DN80
> DN200 - < DN300	DN100
> DN300 - < DN900	DN150
> DN900	DN200

- CONCRETE THRUST AND ANCHOR BLOCKS & GENERAL CONCRETING SHALL BE CLASS N25 IN ACCORDANCE WITH AS.1379 & AS.3600.
- STONE PITCHING TO BE A MINIMUM OF 2.5m X 3.5m TO FIT THE NATURAL FALL OF THE LAND.

NO	DESCRIPTION	DRN	DATE	CKD	APPD
5	GROUDED STONE PITCHING AMENDED.	J.W.	JAN'24	J.C.	D.C.
4	GENERAL AMENDMENTS 2021.	P.W.	DEC'21	J.R.	D.C.
3	NOTE 'FOR POTABLE WATER ONLY' ADDED.	A.W.	JUNE'18	J.R.	D.C.
2	ASSEMBLY REVISED AND REDRAWN.	R.G.I.	AUG'08	R.J.	J.P.
1	DRAWING WITHDRAWN.	R.G.I.	OCT'05	R.J.	J.P.

DES	R.J.
DRN	R.G.I.
CHK	R.J.
APPD	J.P.
SCALE	N.T.S.
ISSUED	AUG'08
ALL DIM. IN mm	
DRAFTING STANDARD TO A.S.1100	

**PowerWater**  
NORTHERN TERRITORY

WATER STANDARD DRAWING	
MAINLAYING	
DN100, DN150 AND DN200	
SCOUR VALVE ASSEMBLY	
A3	DRAWING NUMBER W1-2-14A
CAD PRODUCT - DO NOT AMEND MANUALLY	
5	AMDT