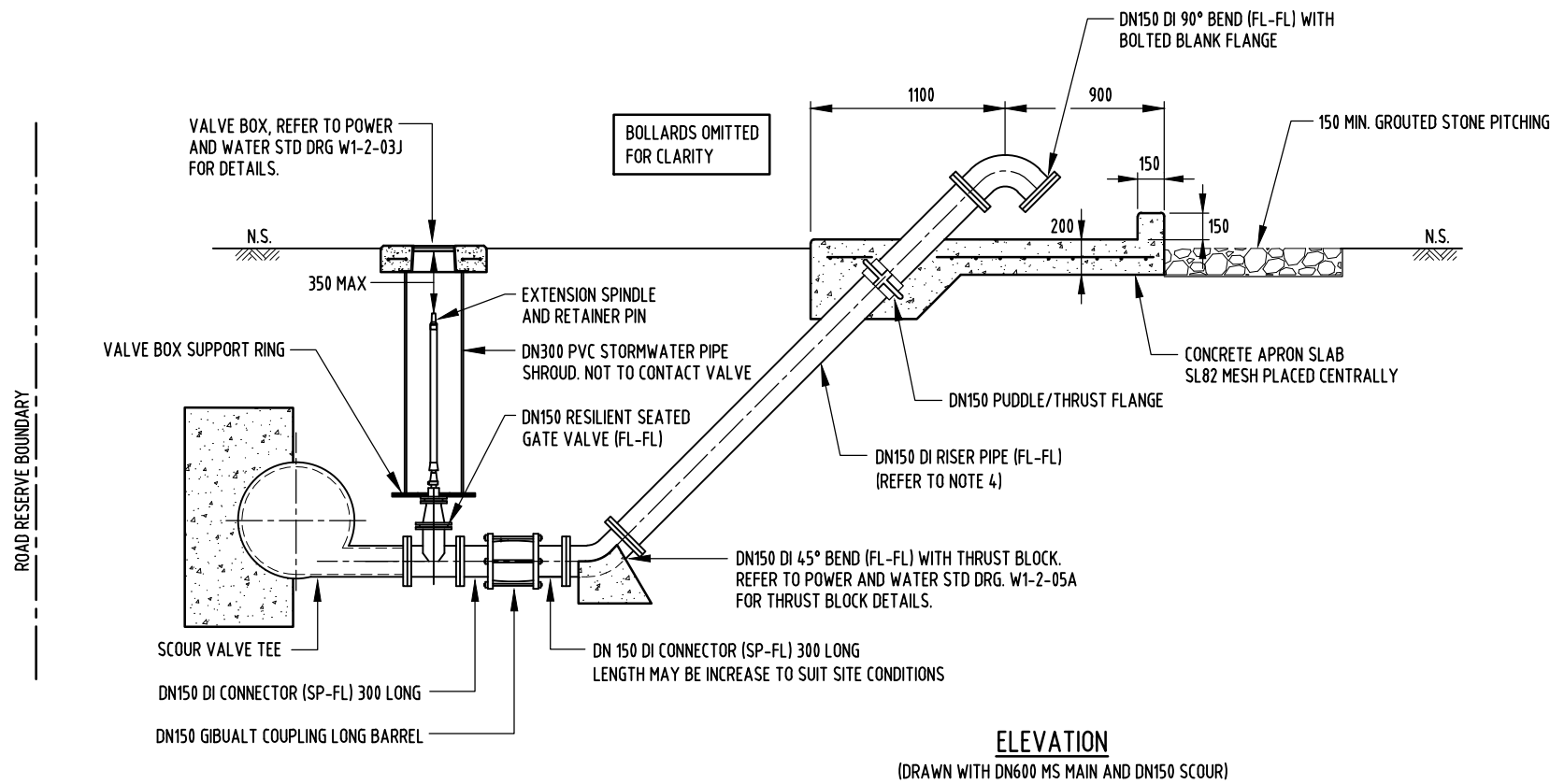


**FOR POTABLE WATER ONLY**

**THIS ASSEMBLY IS NOT TO BE USED FOR SEWERAGE INSTALLATIONS**

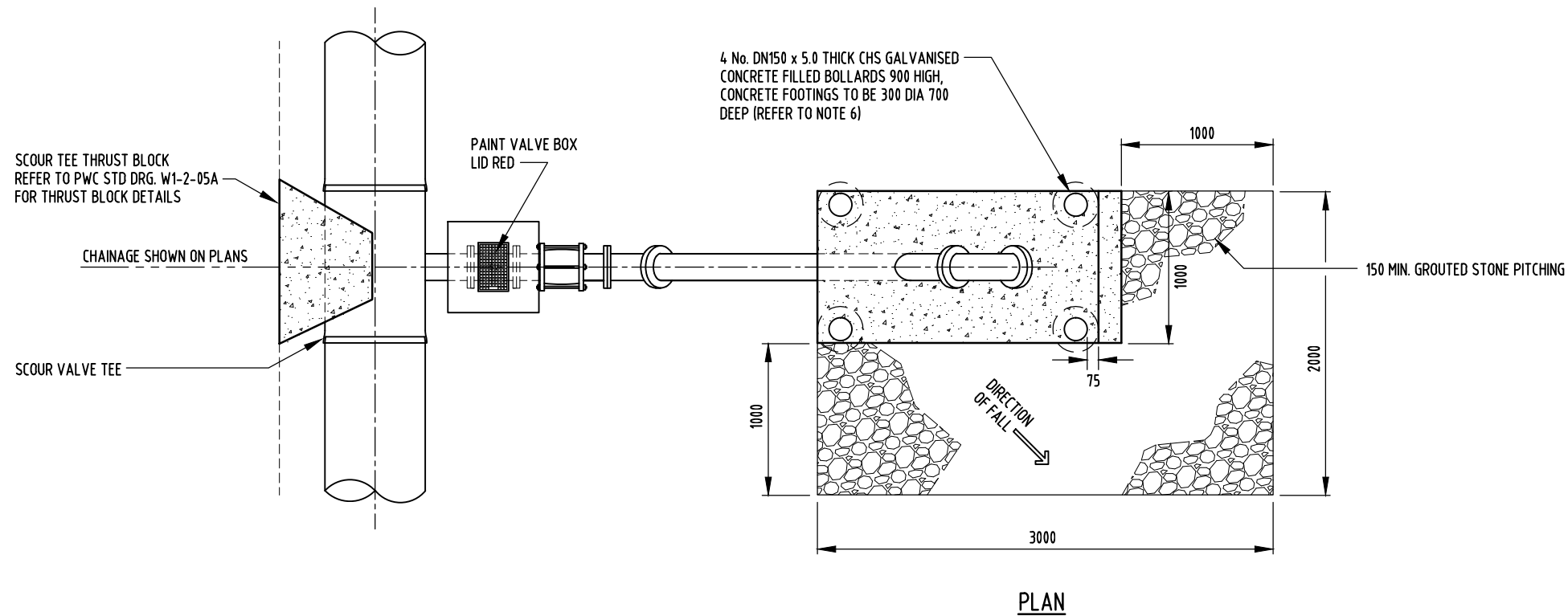


**NOTES**

1. ALL DIMENSIONS ARE IN MILLIMETRES UNLESS NOTED OTHERWISE.
2. USE DN100, DN150 OR DN200 PIPE AND FITTINGS AS APPROPRIATE.
3. DUCTILE IRON PIPE AND FITTINGS ON SCOUR TO BE FULLY ENCAPSULATED WITH POLYMERIC COATING.
4. FOR BURIED FLANGED JOINTS, USE STAINLESS STEEL BOLTS (CLASS 50 UP TO PN16, CLASS 70 ABOVE PN16) WITH STAINLESS STEEL WASHERS UNDER BOLT HEAD AND NUT.
5. FLANGE ADAPTOR SHOWN ON SCOUR PIPE TO ASSIST CONSTRUCTION. FLANGED PIPE OF APPROPRIATE LENGTH (AND WITHOUT FLANGE ADAPTOR) CAN BE USED BETWEEN BENDS AS ALTERNATIVE.
6. LOCATION OF BOLLRARDS CAN BE ALTERED WITH PWC APPROVAL, TO SUIT SITE REQUIREMENTS.
7. GENERALLY SCOUR VALVE ARRANGEMENTS ARE TO BE LOCATED ON THE ROAD SIDE OF MAIN.
8. REFER TO PLANS, LONGITUDINAL SECTIONS AND PIPE SCHEMATIC DETAILS FOR PREFERRED LOCATION / ORIENTATION OF SCOUR OUTLETS.
9. OUTLET LOCATIONS SHALL BE CONFIRMED ON SITE WITH SUPERINTENDENT.
10. ROTATE 90° PARALLEL TO MAIN FOR SCOUR VALVE INSTALLATION ON DEEP MAIN.

MINIMUM SCOUR SIZE	
MAIN SIZE	SCOUR SIZE
< DN200	DN80
> DN200 - < DN300	DN100
> DN300 - < DN900	DN150
> DN900	DN200

11. CONCRETE THRUST AND ANCHOR BLOCKS & GENERAL CONCRETING SHALL BE CLASS N25 IN ACCORDANCE WITH AS.1379 & AS.3600.



NO	DESCRIPTION	DRN	DATE	CKD	APPD
4	GENERAL AMENDMENTS 2021.	PW	DEC'21	JR	DC
3	NOTE 'FOR POTABLE WATER ONLY' ADDED.	AW	JUNE'18	JR	DC
2	ASSEMBLY REVISED AND REDRAWN.	RGI	AUG'08	RJ	JP
1	DRAWING WITHDRAWN.	RGI	OCT'05	RJ	JP



DES	RJ	WATER STANDARD DRAWING	
DRN	RGI	MAINLAYING	
CHK	RJ	DN100, DN150 AND DN200	
APPD	JP	SCOUR VALVE ASSEMBLY	
SCALE	N.T.S.	A3	DRAWING NUMBER W1-2-14A
ISSUED	AUG'08		
ALL DIM. IN mm			4
DRAFTING STANDARD TO A.S.1100		CAD PRODUCT - DO NOT AMEND MANUALLY	