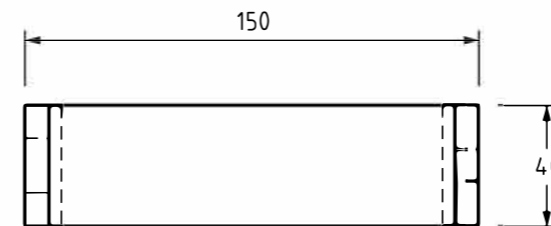
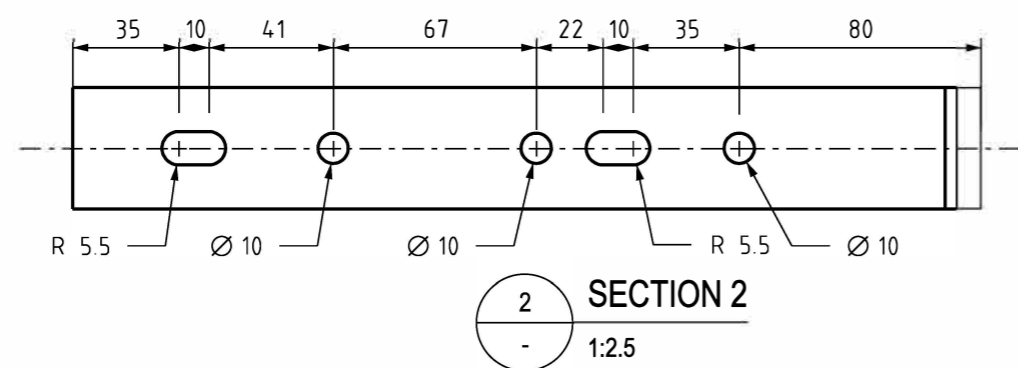
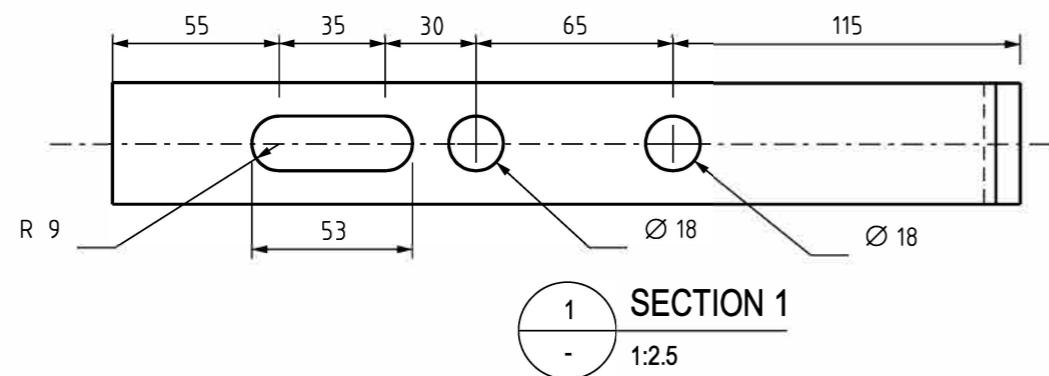
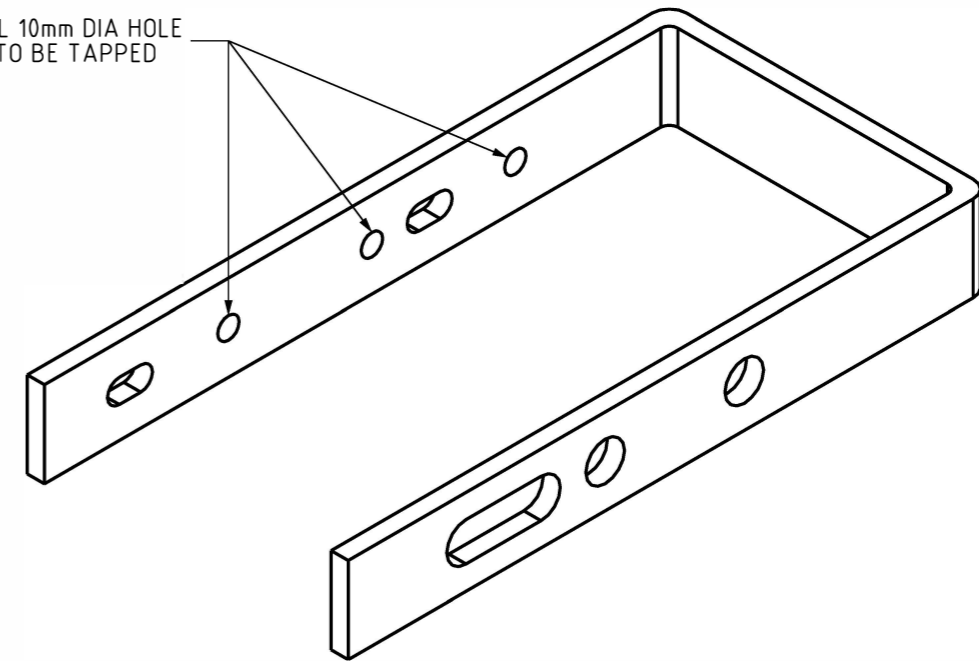


ALL 10mm DIA HOLE TO BE TAPPED



ITEM NUMBER: 260174
FMS 40x8 mm

NOTES:

- FOR MOUNTING FUSED ISOLATOR REFER TO STD DRG S04-01-03-05, THIS BRACKET REPLACES THE MANUFACTURERS SUPPLIED BRACKET.
- BRACKET TO BE MOUNTED ON LV SERVICE ARM.
- ALL ROUGH OR BURRED EDGES ARE TO BE DRESSED CLEAN.
- BRACKET TO BE HOT DIP GALVANIZED IN ACCORDANCE WITH AS 4680 AFTER APPROPRIATE PREPARATION AND PRE TREATMENT IN ACCORDANCE WITH RELEVANT PART(S) OF AS 1627.
- FABRICATION TO COMPLY WITH PWC SPECIFICATION STSP 01-002.

NO	DESCRIPTION	DRN	DATE	CKD	APPD
6	CHANGED VIEW ORIENTATION OF SECTION 1. MODIFIED SECTION 2'S HOLES TO SLOTTED HOLES. ADDED NOTE 5	P.BH.	JUL'22	C.C.	B.C.
5	UPDATED NOTE 1 & IMAGERY & DRAWING TITLE	C.C.	JAN'21	B.V.	B.C.
4	PADDED DRAWING NUMBERS	C.C.	AUG'19	M.S.	C.C.
3	SLOT ADDED, 160A REMOVED FROM TITLE 400A ADDED TO TITLE	A.T.	JUN'13	B.C.	B.C.
2	DESIGN CHANGED TO OPEN TYPE	K.I.	DEC'05	C.C.	-
1	FMS CHANGED FROM 8 TO 6 AND OTHER MINOR ALTERATIONS MADE	RGI	SEP'96	AGB	PJD
AMENDMENTS					

PowerWater
NORTHERN TERRITORY

DES		POWER STANDARD DRAWING	
DRN	JAL	LINE HARDWARE	
CKD	SCM	LV-ABC, BRACKET FOR WELDED POLE SOLUTION.	
APPD	PJD	LV FUSED ISOLATOR	
SCALE	AS SHOWN	A3	DRAWING NUMBER S04-01-02-03
ISSUED	JUL'1995		
ALL DIM. IN mm		CAD PRODUCT - DO NOT AMEND MANUALLY	
DRAFTING STANDARD TO A.S.1100		AMDT	