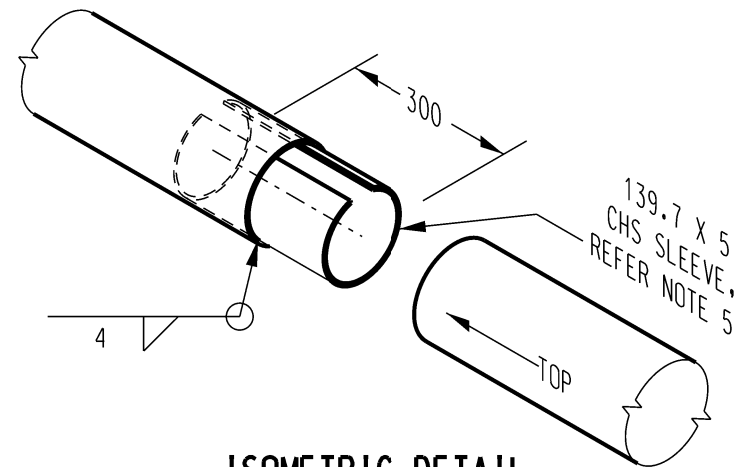


BASE PLATE
REMOVE CORNERS
AS ILLUSTRATED

PLAN - BASEPLATE



**ISOMETRIC DETAIL
BUTT JOINT**

NOTES:

1. ALL WELDS AND BLACK METAL SURFACES TO BE CLEANED AND COATED WITH COLD GALVANISING COMPOUND.
2. COLUMN TO BE LEFT GALVANISED ACCORDING TO AS 1650 - NO PAINTING REQUIRED.
3. ALL ROUGH OR BURRED EDGES ARE TO BE DRESSED CLEAN.
4. ALL WELDING AND WELD PREPARATION TO BE IN ACCORDANCE WITH AS 1554.
5. SLEEVE SPLIT TO FIT TIGHTLY INTO POLE.
6. 2.7m SECTION OF POLE FITTED OVER SLEEVE AND WELDED TO LOWER SECTION.
7. FULL LENGTH PIPES ARE PREFERRED TO WELDED PIPES.

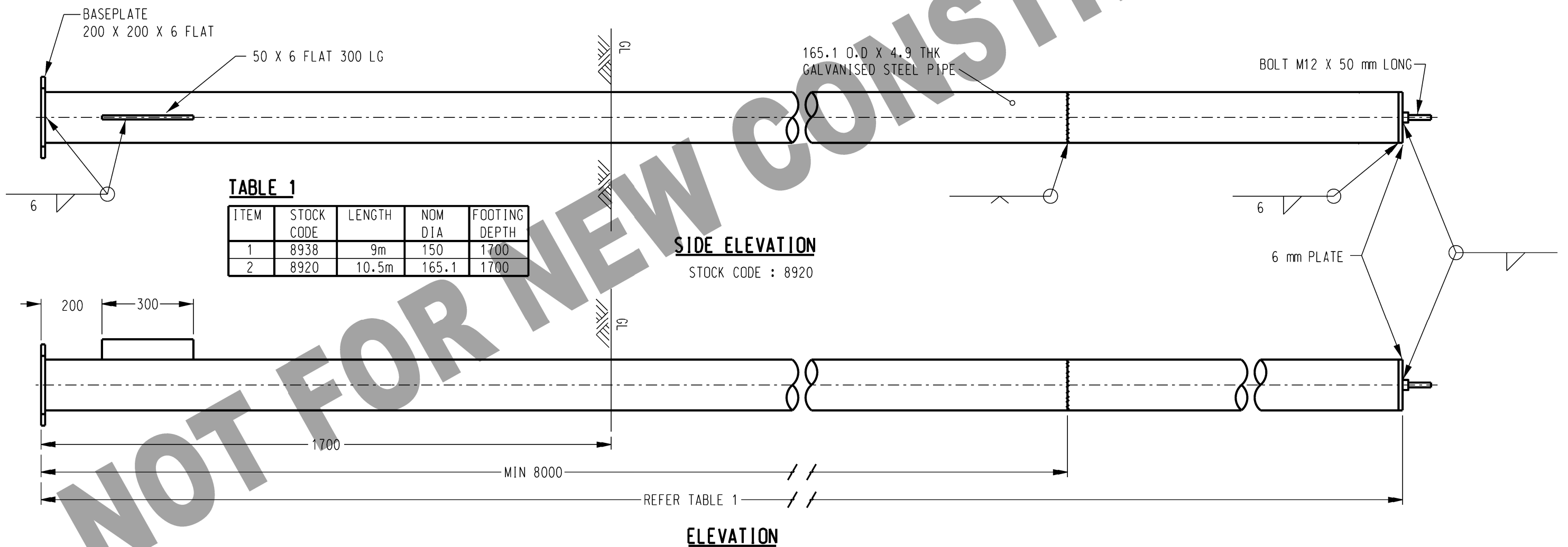


TABLE 1

ITEM	STOCK CODE	LENGTH	NOM DIA	FOOTING DEPTH
1	8938	9m	150	1700
2	8920	10.5m	165.1	1700

SIDE ELEVATION

STOCK CODE : 8920

ELEVATION

NO	DESCRIPTION	DRN	DATE	CKD	APPD
8	TITLEBLOCK FORMATTED. CHANGED 'SUPERSEDED' WATERMARKING TO 'NOT FOR NEW CONSTRUCTION'.	P.BH.	APR'23	B.C.	B.V.
7	NOT TO BE USED IN NEW STREELIGHT CONSTRUCTION.	A.S.	JAN'06	C.C.	-
6	6mm PLATE CHANGED TO 125 x 10. M12 EARTH STUD REMOVED.	K.I.	SEP'05	C.C.	-
5	EARTH STUD M12 x 50mm ADDED.	A.S.	MAR'00	-	F.R.R.
4	DETAIL AT JOIN CHANGED.	R.G.I.	MAR'00	-	F.R.R.
3	CHANGE TO BASE PLATE.	R.G.I.	JUN'98	-	F.R.R.
2	REDRAWN NOTE 5 ADDED.	J.A.L.	JUL'95	S.C.M.	P.J.D.
1	DIMENSIONS REVISED. DETAIL REMOVED.	R.T.F.	MAY'90	-	N.S.

PowerWater
NORTHERN TERRITORY

DES	A.B.	POWER STANDARD DRAWING	
DRN	C.DUANE	COLUMN STEEL 10.7 METRE	DRAWING NUMBER S03-01-01-03
CKD	N.S.		
APPD	B.K.		
SCALE	N.T.S.	A3	DRAWING NUMBER S03-01-01-03
ISSUED	MAR'90		
ALL DIM.	IN mm	DRAWING NUMBER S03-01-01-03	
DRAFTING STANDARD TO A.S.1100		CAD PRODUCT - DO NOT AMEND MANUALLY	

