

**NOTES**

1. TUBELINE ITEM 12 SHALL BE FIXED TO POLE VIA A 6mm FILET WELD ALL AROUND.
2. TUBELINE ITEM 24 SHALL BE FIXED TO POLE VIA A 6mm FILET WELD.
3. POWER FASTEN HV DANGER SIGN TO POLE.
4. FOR DETAILS OF GAS BREAK SWITCH INSTALLATION REFER TO DWG. S01-02-07-11 SHEETS 2 AND 3.
5. FOR EARTHING GENERAL ARRANGEMENT REFER TO S01-02-03-11, S01-02-03-12, S01-02-03-13.
7. LIGHTNING ARRESTORS MOUNTED ON THE VOLTAGE REGULATOR TO BE CONNECTED TO EARTH VIA COPPER STRAP.
8. TOP MOUNT GBS TO BE INSTALLED AS A BYPASS SWITCH. FOR INSTALLATION DETAILS REFER TO S01-02-07-11.

ITEM	QTY.	DESCRIPTION	DRAWING No.	ITEM NUMBER
37	4	ISOLATING SWITCH 630A	S01-01-06-07	2204
36	9	ONESTEEL TUBELINE RHS C350LD (AS1163) 150x100x9mm (3500 LONG)	S01-02-06-13_2	-
35	12	DISCONNECT - T	S01-01-04-10	2295
34	6	INSULATOR STUDS	S01-01-04-44	300483
33	6	CYCLOALIPHATIC POST INSULATORS	S01-01-03-10	300467
32	2	200A BARREL FOR EDD ASSEMBLIES	S01-01-06-06	407372
31	2	200A K TYPE FUSE	S01-01-06-05	407373
26	2	HV SHACKLE STRAP 100 x 6mm	S01-01-04-37	298653
24	AR	DATA CONTROL CABLE	-	-
23	1	LINE POLE 10.5D BOLTED CONNECTIONS TYPE	S01-01-01-11	298471
22	1	LINE POLE 12.0D BOLTED CONNECTIONS TYPE	S01-01-01-12	298489
21	2	SIGN - "DANGER HIGH VOLTAGE"	S02-01-08-01	6429
20	4	C-CHANNEL 150 x 75 x 5 (840 LONG) DURAGAL	S01-02-06-13_2	-
19	5	THREADED ROD M24 x 1000 (CUT TO SUIT)	-	401393
	28	M24 NUT (GRADE 8)	-	TBA
	28	M24 SQUARE WASHER	S01-01-04-43	298828
	14	M24 HELICAL SPRING WASHER	-	114330
18	3	M16 x 160 HEXAGON BOLT & NUT	-	400865
	6	M16 SQUARE WASHER	S01-01-04-43	114348
	3	M16 HELICAL SPRING WASHER	-	114322
17	9	M24 x 65 HEXAGON BOLT & NUT	-	400800
	18	M24 SQUARE WASHER	S01-01-04-43	298828
	9	M24 HELICAL SPRING WASHER	-	114330
16	4	M24 x 180 HEXAGON BOLT & NUT	-	400802
	8	M24 SQUARE WASHER	S01-01-04-43	298828
	4	M24 HELICAL SPRING WASHER	-	114330
15	4	CROSSARM HV - EDD MOUNTING	S01-01-02-10	298547
14	5	CROSSARM BRACE	S01-02-01-49	298687
13	1	CROSSARM, HV TERMINATION, FIBREGLASS, 125 x 125mm	S01-01-02-10	414398
12	2	ONESTEEL TUBELINE RHS C350LD (AS1163) 150x100x9mm (840 LONG)	S01-02-06-13_2	-
11	12	COPPER STALK LUG 150 BELL MOUTH	S01-01-04-21	406790
10	2	VOLTAGE REGULATOR 11/12.7/19.1/22 KV	-	406799
9	12	COMPRESSION LUG 35 sq mm	S02-01-02-11	156240
7	2	EDD FUSE ASSEMBLIES	S01-01-06-06	3863
6	6	SUSPENSION INSULATOR	S01-01-03-09	292656
5	12	11KV 35SQMM CU PVC	S01-01-04-10	9092

NO	DESCRIPTION	DRN	DATE	CKD	APPD
12	REMOVED ITEMS 3, 4 (EPR CABLE), 11, 27, 28, 29 (FLEX CABLE), & 30. AMENDED ITEMS 5, 9, & 13. AMENDED IMAGERY. UPDATED LABELS.	P.BH.	SEP'23	B.C.	B.V.
11	SHEET 3 AMENDED. ITEM 4 AMENDED. ITEM 37 ADDED.	P.BH.	NOV'22	B.V.	B.C.
10	AMENDED IMAGERY. ADDED NOTE 8. ADDED ITEM 36. REMOVED ITEMS 1, 2, 8, & 25.	P.BH.	JUL'22	B.V.	B.C.
9	TITLEBLOCK & DRAWING NUMBERS FORMATTED	K.T.	JAN'19	C.C.	C.C.
8	ITEM NUMBER AMENDED	C.C.	04.05.18	I.B.	B.C.
7	ITEM 2 ADDED. ITEM 29, 30 UPDATED	A.T.	JUL'12	B.N.	B.C.
6	RENUMBERED TO S01-2-6-13 DRAWING REFERENCES AND STOCK CODES UPDATED	C.C.	MAR'11	A.T.	S.C.

**PowerWater**  
NORTHERN TERRITORY

DES S.D. TRAN

DRN A.S.

CKD B. CHEUNG

APPD B. CHEUNG

SCALE N.T.S.

ISSUED JULY'06

ALL DIM. IN mm

DRAFTING STANDARD TO A.S.1100

POWER STANDARD DRAWING

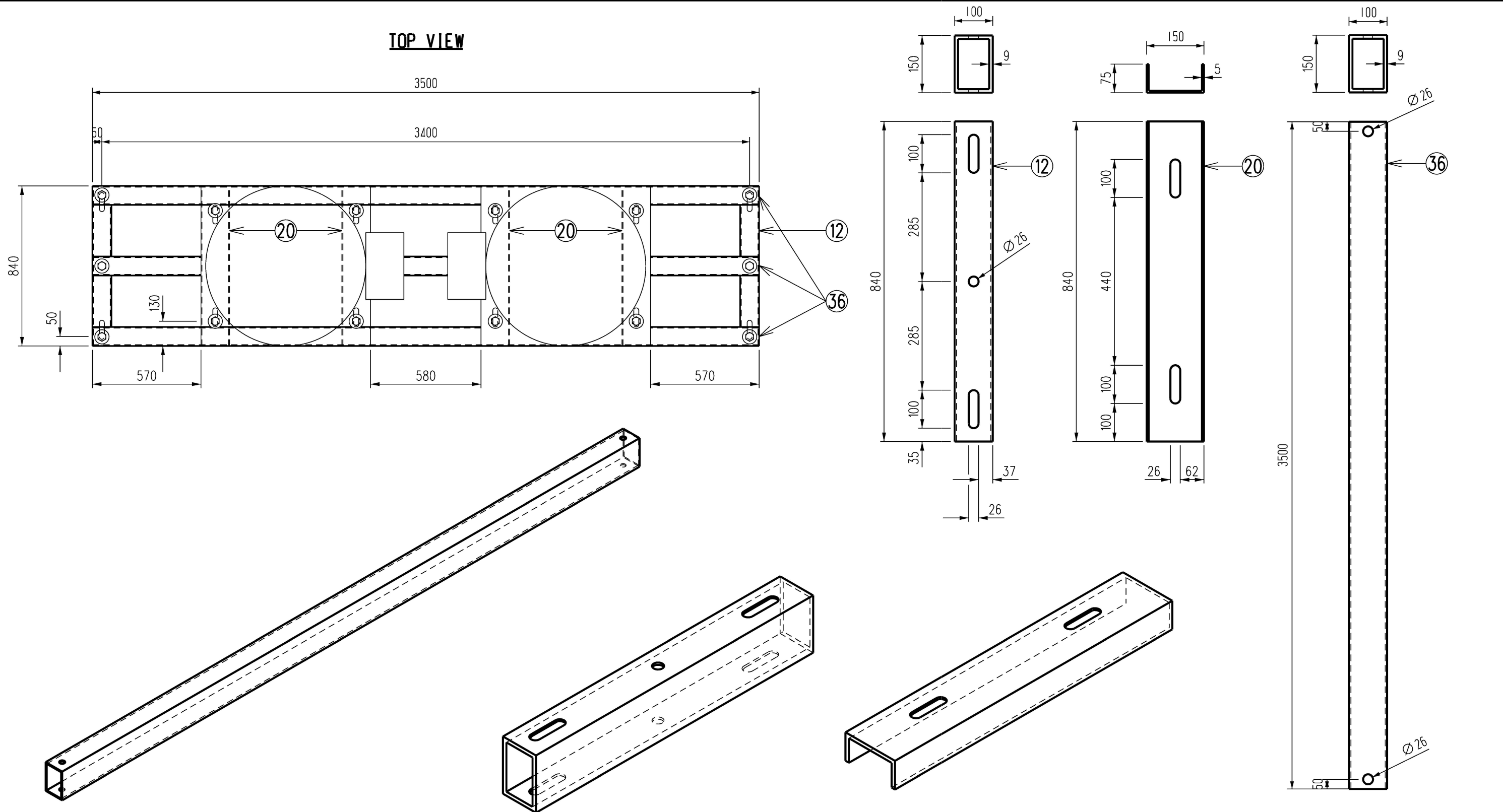
**POLE STRUCTURES DOUBLE POLE  
TWO SINGLE PHASE REGULATORS  
GENERAL ARRANGEMENT-SHEET 1 of 3**

**A3** DRAWING NUMBER **S01-02-06-13\_1**

CAD PRODUCT - DO NOT AMEND MANUALLY

12

AMDT



**ISOMETRIC VIEW OF ITEM 36**  
SCALE 1:20

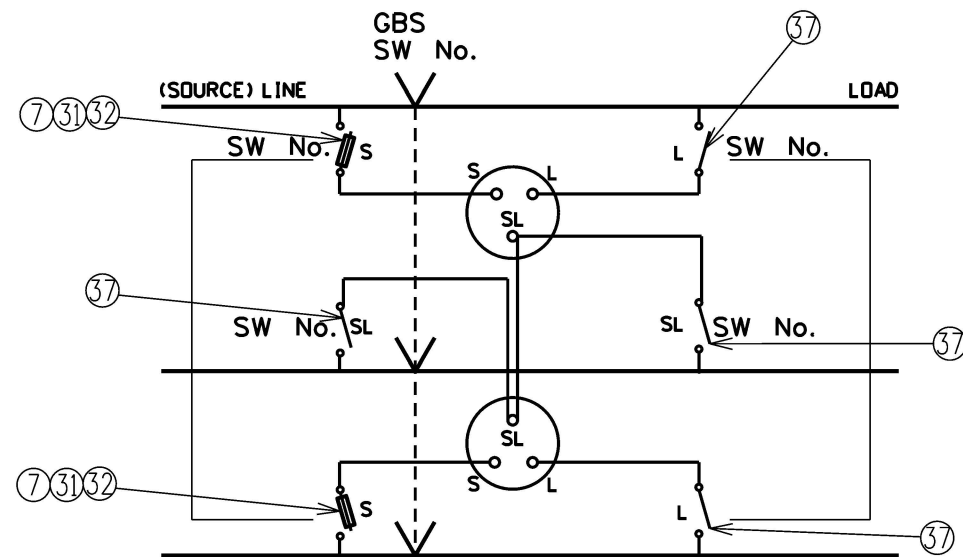
**ISOMETRIC VIEW OF ITEM 12**  
SCALE 1:10

**ISOMETRIC VIEW OF ITEM 20**  
SCALE 1:10

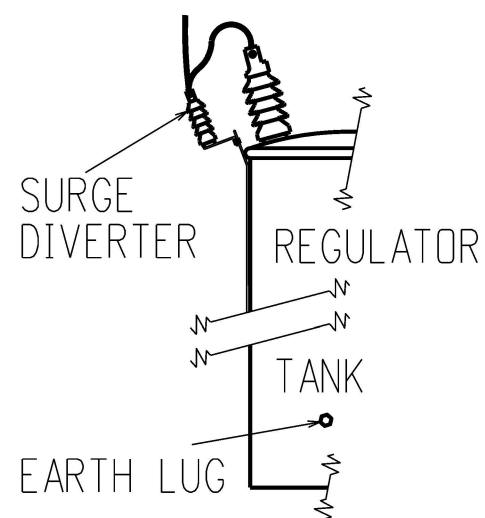
5	SHEET 1 AMENDED.	P.BH.	SEP'23	B.C.	B.V.
4	SHEETS 1 & 3 AMENDED.	P.BH.	NOV'22	B.V.	B.C.
3	AMENDED IMAGERY. ADDED ITEM 20.	P.BH.	JUL'22	B.V.	B.C.
2	TITLEBLOCK & DRAWING NUMBER FORMATTED	K.T.	JAN'19	C.C.	C.C.
1	DRAWING SHEET 1 AMENDED	I.B.	JUN 18	B.V.	B.C.
0	ISSUED FOR CONSTRUCTION	A.S.	JUN 06	B.C.	B.C.
NO	DESCRIPTION	DRN	DATE	CKD	APPD
AMENDMENTS					



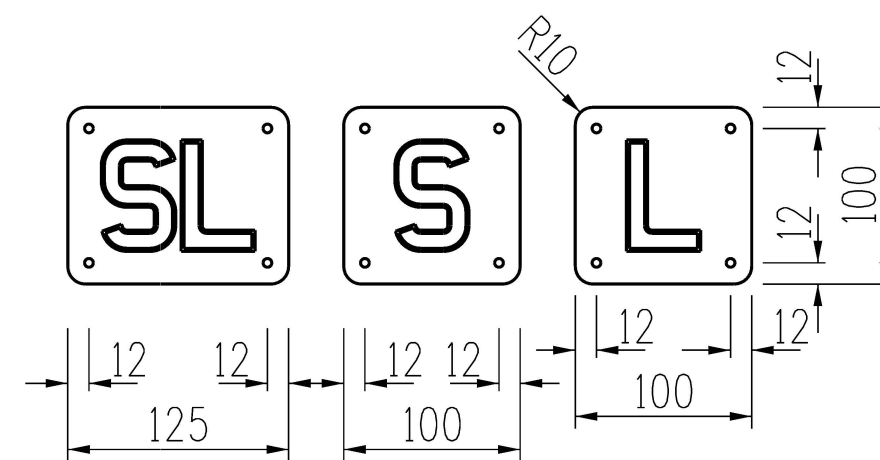
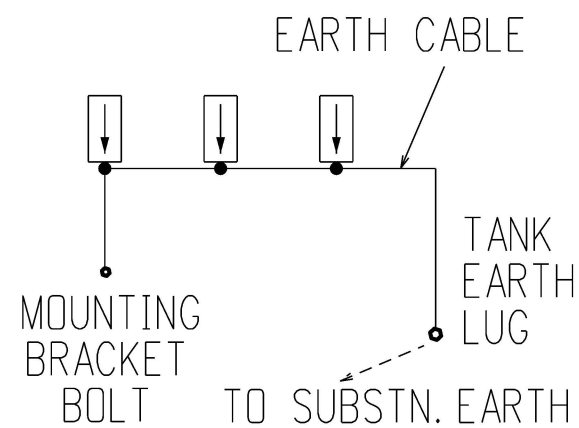
DES	S. D. TRAN	POWER STANDARD DRAWING	
DRN	A. SCHMID	POLE STRUCTURES DOUBLE POLE TWO SINGLE PHASE REGULATORS PLATFORM COMPONENTS-SHEET 2 of 3	
CKD	B. CHEUNG		
APPD	B. CHEUNG		
SCALE	AS SHOWN	A3	DRAWING NUMBER S01-02-06-13_2
ISSUED	JULY'06		
ALL DIM.	IN mm	CAD PRODUCT - DO NOT AMEND MANUALLY	
DRAFTING STANDARD TO A.S.1100		AMDT	



SCHEMATIC DIAGRAM



SURGE DIVERTER EARTHING ARRANGEMENT



SWITCH LETTERS

BLACK ON YELLOW

SCALE 1 : 5

SINGLE SIGNS

SL: 502100

S: 502098

L: 502099

NO	DESCRIPTION	DRN	DATE	CKD	APPD
6	AMENDED SHEET 1.	P. BH.	SEP'23	B. C.	B. V.
5	AMENDED SHEET 1. ITEM TAGS ADDED TO SCHEMATIC DIAGRAM.	P. BH.	NOV'22	B. V.	B. C.
4	MOVED NOTES TO SHEET 1.	P. BH.	JUL'22	B. V.	B. C.
3	TITLEBLOCK & DRAWING NUMBERS FORMATTED	K. T.	JAN'19	C. C.	C. C.
2	DRAWING SHEET 1 AMENDED	I. B.	JUN'18	B. V.	B. C.
1	SWITCH LETTER STOCK CODES ADDED	A. T.	MAR'14	B. C.	B. C.
0	ISSUED	CM	14.8.08	A. G.	B. C.
AMENDMENTS					

**PowerWater**  
NORTHERN TERRITORY

DES	S. D. TRAN	POWER STANDARD DRAWING		
DRN	A. S.	POLE STRUCTURES DOUBLE POLE TWO SINGLE PHASE REGULATORS MISCELLANEOUS DETAILS - SHEET 3 OF 3		
CKD	B. CHEUNG			
APPD	B. CHEUNG			
SCALE	N.T.S.			
ISSUED	JULY'06	A3	DRAWING NUMBER	S01-02-06-13_3
ALL DIM. IN mm				
DRAFTING STANDARD TO A.S.1100		CAD PRODUCT - DO NOT AMEND MANUALLY		6 AMDT