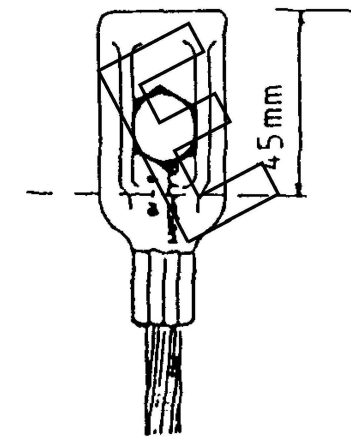
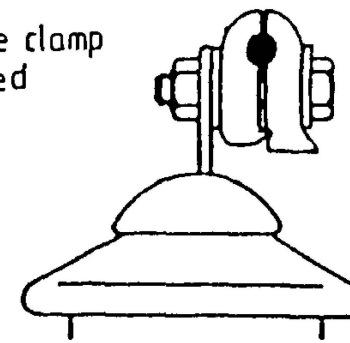
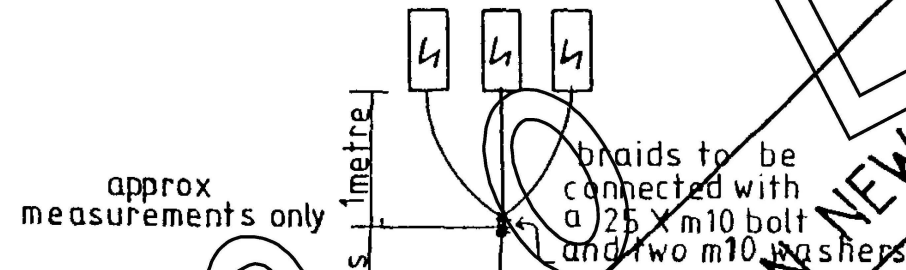


Aluminium to copper tee clamp with copper tail removed



universal tee-clamp



braids to be connected with a 25 X m10 bolt and two m10 washers

Where 25 X 3mm earth strap is used as the main earth, connections to be made as per drawing
split bolt connectors should be used if main earth is hard down copper cable
Earthing lay out

finned filed and drilled

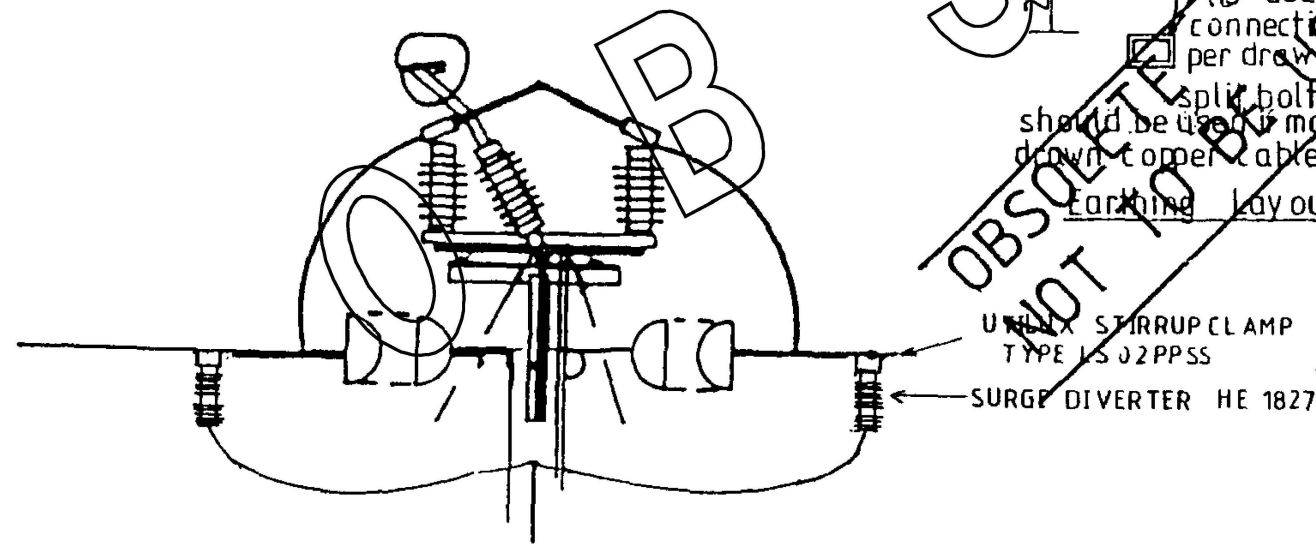


Strap braided copper 25 X 3mm

Separate braids to be connected to each arrester as per earthing lay out

NOTE

Prior approval is required from the Distribution Engineer before surge diverters can be installed



NO	DESCRIPTION	DRN	DATE	CKD	APPD
3	TITLEBLOCK & DRAWING NUMBER FORMATTED				
2	OBSOLETE WARNING NOTE ADDED				
1	TITLE & DRAWING NUMBER AMENDED				
AMENDMENTS					

K.T. APR'19 C.C. C.C.
- 01/97 - -
- 03/85 - -



DES -	POWER STANDARD DRAWING		
DRN G.SHANAG	POLE TOP UNITS SURGE DIVERTER LOCATIONS HIGH VOLTAGE		
CKD -	A3	DRAWING NUMBER	S01-02-02-15
APPD -			
SCALE N.T.S.			
ISSUED JAN'86			
ALL DIM. IN mm			
DRAFTING STANDARD TO A.S.1100		CAD PRODUCT - DO NOT AMEND MANUALLY	

