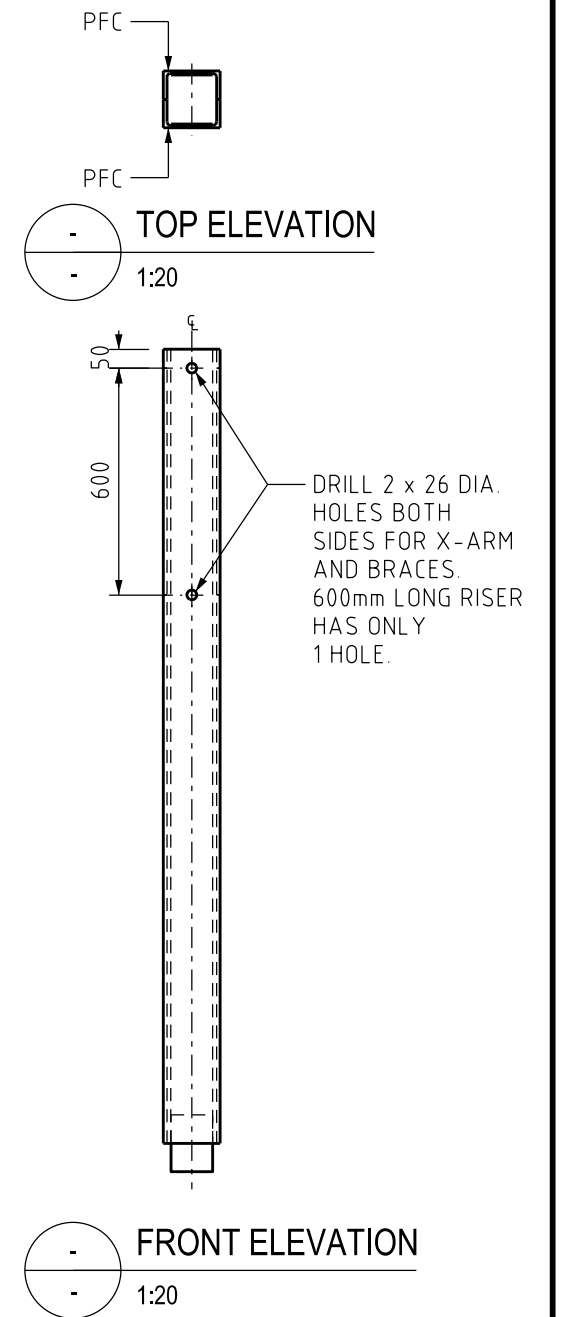
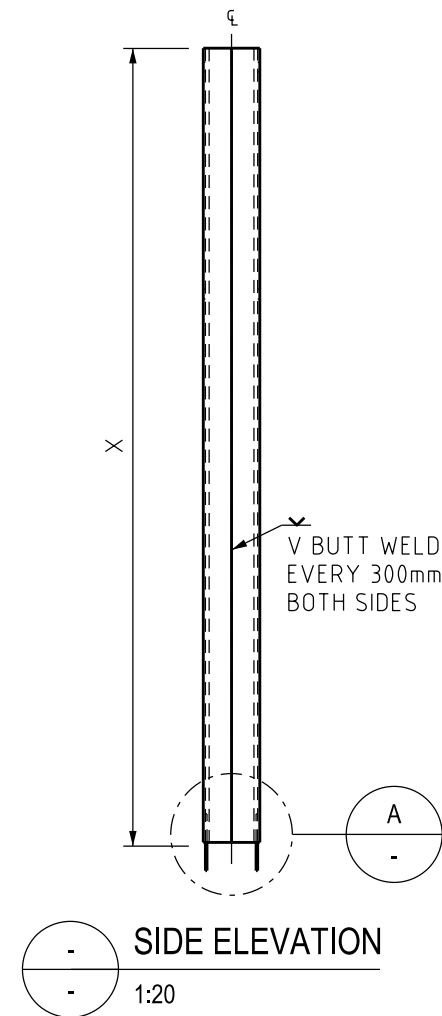
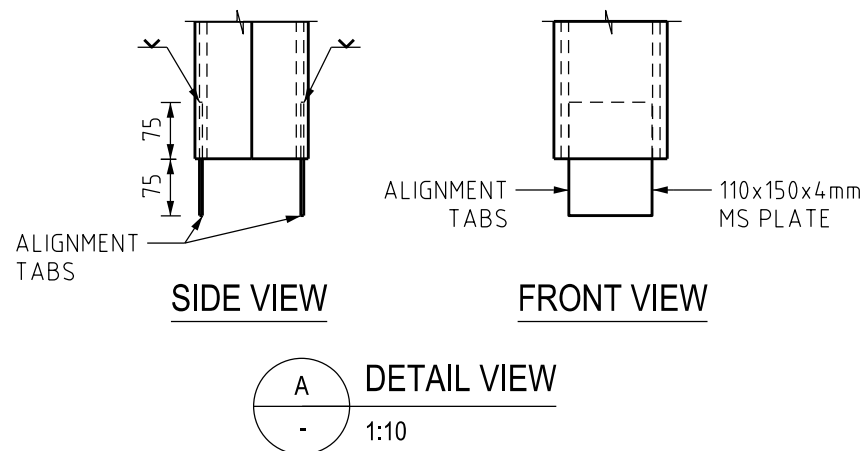


LENGTH X mm	ITEM	B TYPE 2x150 PFC	ITEM	C TYPE 2x200 PFC
600	1	500802	15	-
900	2	500803	16	500804
1200	3	500806	17	500805
1300	4	500811	18	500812
1500	5	500813	19	500814
1700	6	-	20	500815
1800	7	500816	21	500906
1900	8	-	22	500817
2000	9	500818	23	-
2100	10	500819	24	500820
2700	11	500821	25	-
2800	12	500822	26	-
3000	13	500824	27	500825
3300	14	500823	28	-

NOTES:

- TABS PROVIDED TO ASSIST WITH ALIGNMENT
- TABS FILLET WELDED TO PFC, BEFORE PFC PIECES ARE BUTT WELDED TOGETHER



ITEM 29: BOLTED RISER

ITEM NUMBER: 400854
125 x 125 x 6mm SHS TUBELINE

ITEMS 1-28: WELDED RISER

NO	DESCRIPTION	DRN	DATE	CKD	APPD
7	EXTRA 26 DIA HOLES ADDED TO BOLTED RISER	C.C.	JUL-22	B.V.	B.C.
6	REMOVE HOLES ON WELD SEAM ON WELDED RISER	A.T.	SEP'21	B.V.	A.N.
5	ADDED WELDED DETAIL VIEW, TOP ELEVATION FOR WELDED & BOLTED POLE RISER. REFORMATTED TABLE AND NOTES	C.C.	MAR'21	B.V.	B.C.
4	LOCATING TABS ADDED TO EXISTING DRAWING	C.C.	SEP'19	B.V.	B.V.
3	ADDED WELDING INSTRUCTION AND CHANGED ELEVATIONS	CWM	SEP'19	C.C.	C.C.
2	TITLEBLOCK & DRAWING NUMBER FORMATTED	K.T.	DEC'18	C.C.	C.C.
1	TABLE FOR TYPE B AND C POLES ADDED	A.T.	FEB'13	B.C.	B.C.
0	ISSUED FOR CONSTRUCTION	J.C.	OCT'02	M.B.	M.B.



DES	M. BOCK	POWER STANDARD DRAWING	
DRN	A. SCHMID	POLES LINE	
CKD	M. BOCK	RISER FOR BOLTED CROSSARM ATTACHMENT TO BOLTED AND WELDED POLE SOLUTIONS	
APPD	M. BOCK		
SCALE	AS SHOWN		
ISSUED	OCT '2002	A3	DRAWING NUMBER S01-01-02-16
ALL DIM. IN mm			
DRAFTING STANDARD TO A.S.1100		CAD PRODUCT - DO NOT AMEND MANUALLY	

