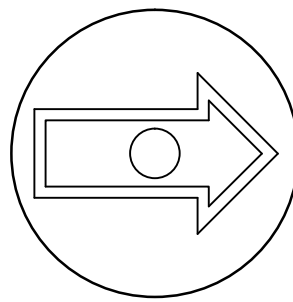
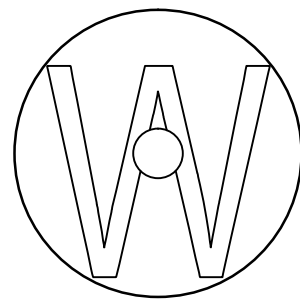


WATER SERVICE

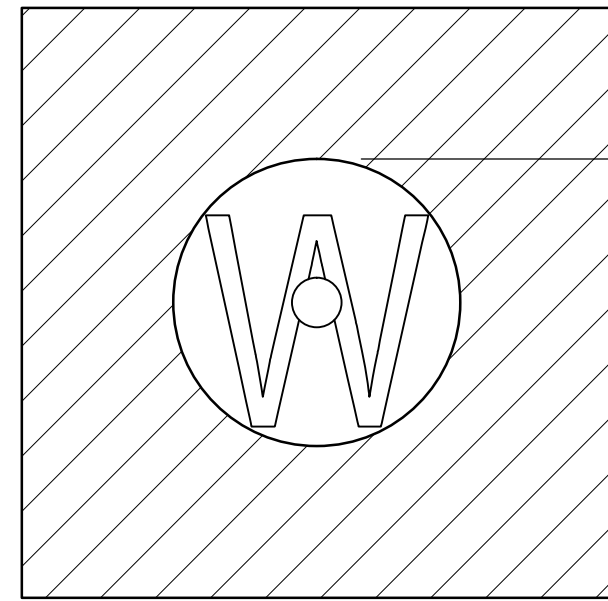
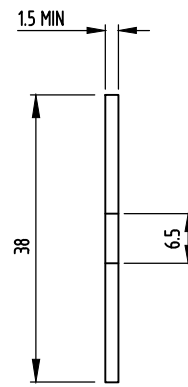


WATER SERVICE TAPPING
(FOR NON-STANDARD
FERRULE COCK LOCATION)

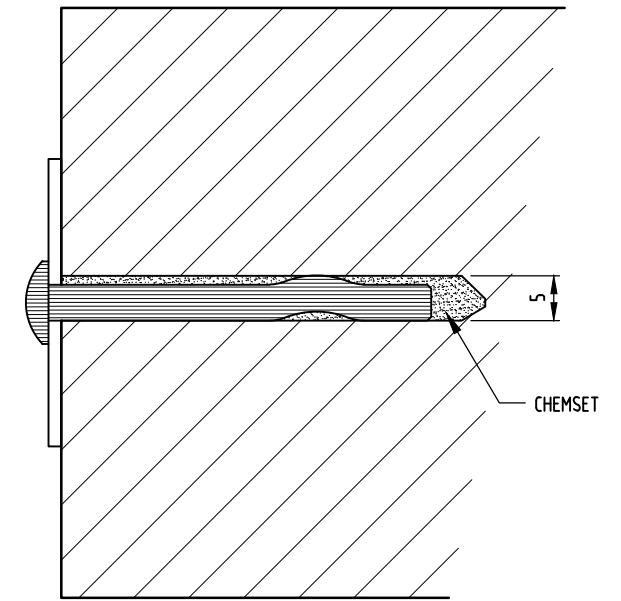


WATER MAIN
(DN100 AND GREATER)

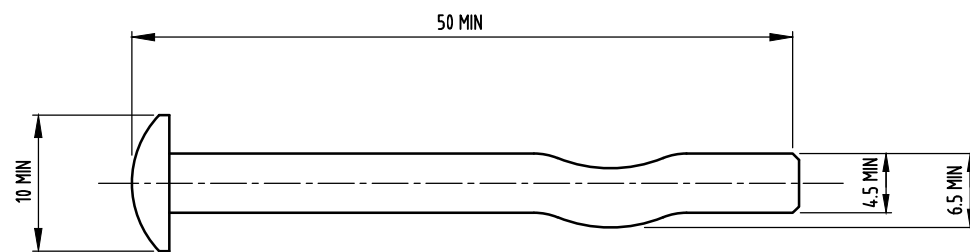
TAGS



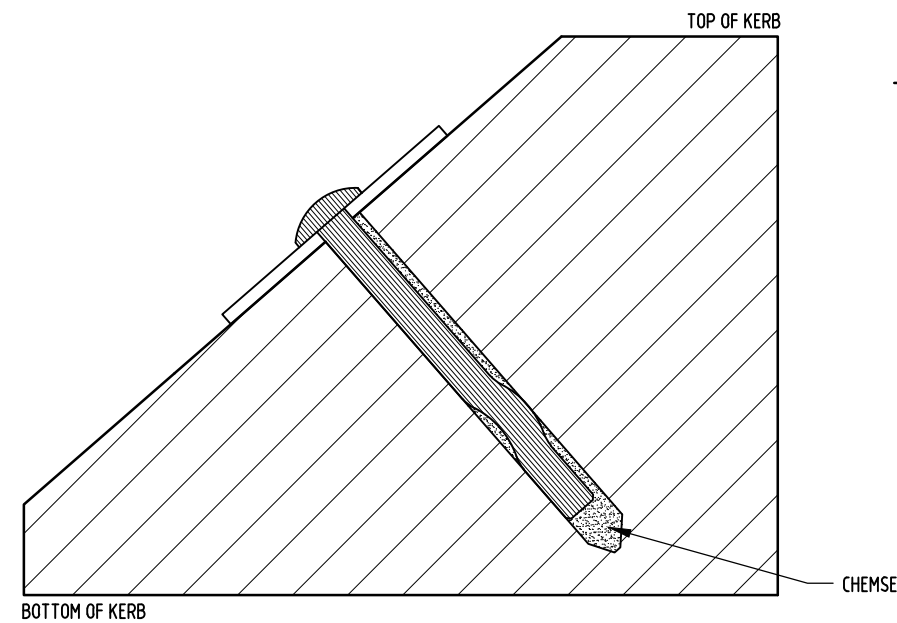
BOTTOM OF KERB



VERTICAL KERB



SPIKE



BOTTOM OF KERB

LAYBACK KERB OR DRIVEWAYS

NOTES:

INSTALLATION OF MARKERS:

1. DRILL A 5mm DIAMETER HOLE TO A DEPTH OF APPROXIMATELY 60mm. THE EDGE OF THE TAG IS TO BE MINIMUM DISTANCE OF 20mm FROM THE TOP KERB EDGE WHEN INSTALLED.
2. CLEAN OUT DUST FROM HOLE USING BLOWER OR VACUUM AND FILL HOLE WITH CHEMSET ADHESIVE.
3. HAMMER SPIKE WITH TAG INTO HOLE UNTIL TAG IS FLUSH WITH KERB AND TAG ROTATED SO TEXT IS AS SHOWN IN DRAWING.

LOCATING KERB MARKERS:

KERB MARKERS ARE TO BE LOCATED DIRECTLY ABOVE WATER SERVICES OR WATER MAINS AT ROAD CROSSINGS, ON EACH SIDE OF THE ROAD AND ALSO ON THE MEDIAN STRIP KERBS.

KERB MARKERS TAG & SPIKE:

MATERIAL: STAINLESS STEEL FOR BOTH TAG AND SPIKE

2	GENERAL AMENDMENTS 2021.	PW	DEC'21	JR	DC
1	REDRAWN IN AUTOCAD.	AW	JUN'18	JR	DC
NO	DESCRIPTION	DRN	DATE	CKD	APPD
	AMENDMENTS				



DES	-	WATER STANDARD DRAWING	
DRN	KI	MAINLAYING	
CHK	RJ	WATER MAINS AND SERVICES	
APPD	JP	KERB MARKERS FOR ROAD CROSSINGS	
SCALE	N.T.S.	A3	DRAWING NUMBER
ISSUED	OCT'06		W1-2-18
ALL DIM. IN mm			
DRAFTING STANDARD TO A.S.1100		CAD PRODUCT - DO NOT AMEND MANUALLY	
			2
			AMDT